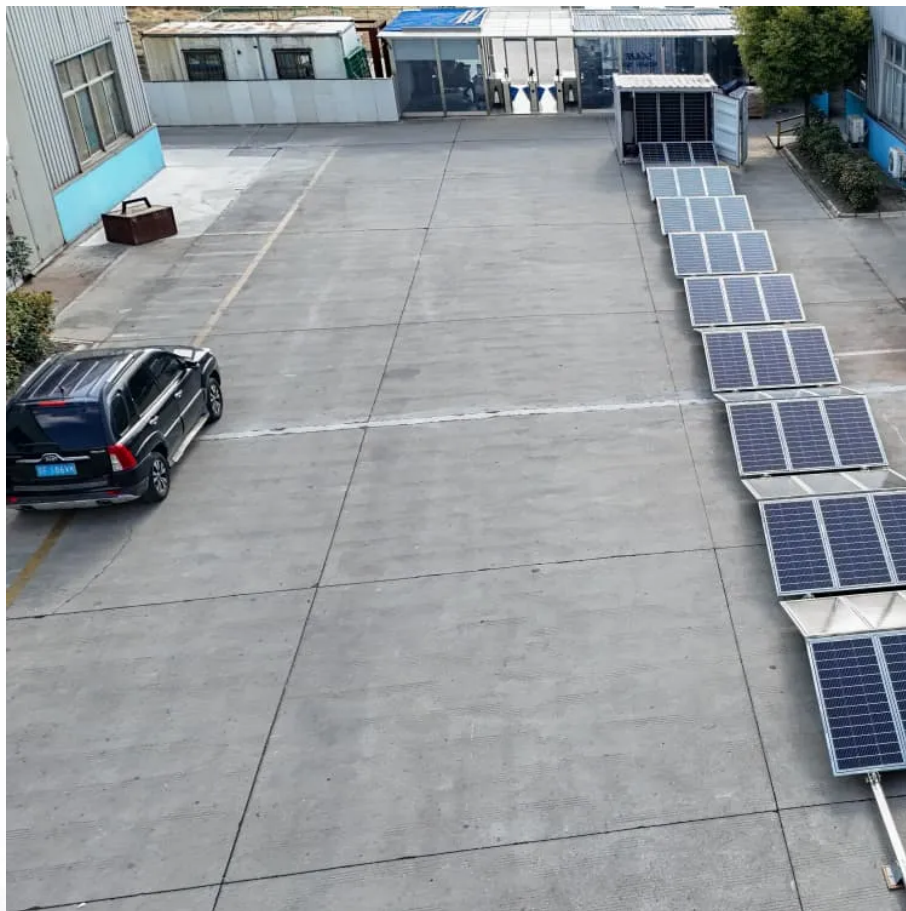


The maximum power per square meter of photovoltaic panels





Overview

The theoretical limit for solar power conversion efficiency indicates that up to 1000 watts can be captured for every square meter of solar panel area under standard testing conditions, specifically at sea level with a direct sun exposure at noon on a clear day. What is a solar power per square meter calculator?

It also includes wiring, inverter, charge controller, and battery bank (if used). A solar power per square meter calculator takes details regarding these factors and then gives the accurate output generated by the solar panel per square meter. After this, it's time to learn about solar panel output calculators.

How many Watts Does a solar panel produce per square meter?

On average, a solar panel produces around 150 to 200 watts per square meter. This can vary due to: Example: A 1.7 m² panel with 20% efficiency will produce about 340W in full sun. Note: Monocrystalline panels lead in efficiency, making them ideal for rooftops with limited space.

How much solar energy is received per square meter?

The amount of solar intensity received by the solar panels is measured in terms of square per meter. The sunlight received per square meter is termed solar irradiance. As per the recent measurements done by NASA, the average intensity of solar energy that reaches the top atmosphere is about 1,360 watts per square meter.

How much power can a 100m² roof produce?

When panel efficiency reaches 30%, a 100m² roof could generate 50,000kWh/year – enough to power 20 average homes. The solar revolution isn't coming; it's already here. Solar panels have become a cornerstone of renewable energy, but many wonder: How much power can a single square meter of solar panels actually produce?

.



How do you calculate wattage of a solar panel?

Wattage is the output of solar panels that is calculated by multiplying the volts by amps. Here, the amount of the force of the electricity is represented by volts. The aggregate amount of energy used is expressed in amps (amperes). Output ratings on most solar panels range between 250 watts to 400 watts. 1. Number of Solar Cells.

How to improve the efficiency of a photovoltaic system?

Regular maintenance – The efficiency of the photovoltaic system increases when both the panel cleaning and debris inspection processes are properly executed. 4. Invest in high-efficiency panels – The PV modules at Rayzon Solar deliver exceptional efficiency which produces optimum energy generation.



The maximum power per square meter of photovoltaic panels



[Solar Energy Per Square Meter: How Much Power Can You Get?](#)

This article explores solar energy per square meter and the various factors that influence energy output, such as location, climate, and panel efficiency. It provides crucial ...

[Request Quote](#)

[How many watts per square meter is the top solar energy?](#)

The theoretical limit for solar power conversion efficiency indicates that up to 1000 watts can be captured for every square meter of solar panel area under standard testing ...

[Request Quote](#)



[How Much Energy Can Solar Panels Generate? Power Output ...](#)

Standard residential solar panels yield power between 250 and 400 watts per hour when operating in optimal environmental conditions. Solar panels produce 1.2 to 1.6 kilowatt-hours ...

[Request Quote](#)



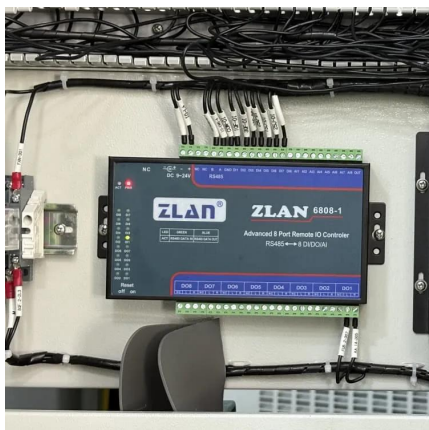
Solar Panel Output: How Much Power Does a Solar Panel Produce...

Learn how much electricity is produced by a solar panel, what factors affect solar panel



output, and how many panels you need to power your home.

[Request Quote](#)



The Output Watts Of Solar Panels

For example, a 1-square-meter panel might have a power output rating of 150 watts. Assuming 1,000 available watts, this panel converts 15 percent of that solar energy into ...

[Request Quote](#)

Climate and Earth's Energy Budget

At Earth's average distance from the Sun (about 150 million kilometers), the average intensity of solar energy reaching the top of the atmosphere directly facing the Sun is about 1,360 watts ...

[Request Quote](#)



[Highest Wattage Solar Panels: Everything You Need to Know](#)

Pros and Cons of Highest Watt Solar Panels High-output solar panels maximize energy yield per square meter and enable faster ROI. However, they come with higher upfront costs, weight ...

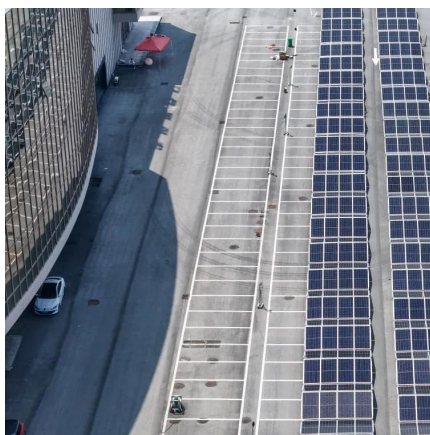
[Request Quote](#)



[Solar Panel Cost Per Square Meter: Breaking Down ...](#)

Per square meter, solar energy optimization means generating solar power with maximum performance and perfection. The first factor required for ...

[Request Quote](#)



Guide To Peak Sun Hours

For example, Illinois averages 3 - 4 peak sun hours per day. During this time, your solar panels will get close to 1,000 watts of solar energy per square meter. In comparison, ...

[Request Quote](#)

[Solar Panel Capacity: A Full Guide to Choosing Solar Panels](#)

Monocrystalline solar panels are the most powerful ones because they have solar cells of higher efficiency that can generate more power per square meter than other solar ...

[Request Quote](#)



[Solar Panel Wattage Explained: How Many Watts Do You Need?](#)

On average, a solar panel produces around 150 to 200 watts per square meter. This can vary due to: Example: A 1.7 m² panel with 20% efficiency will produce about 340W in full ...

[Request Quote](#)



[Solar Power per Square Meter Calculator](#)

A solar power per square meter calculator takes details regarding these factors and then gives the accurate output generated by the solar panel per square meter.

[Request Quote](#)



[Understanding Peak Sun Hours in Singapore: ...](#)

Suppose you reside in Singapore, where the average PSH is approximately 4.5-5 hours per day. During these hours, the sun delivers around 5.8 kWh of ...

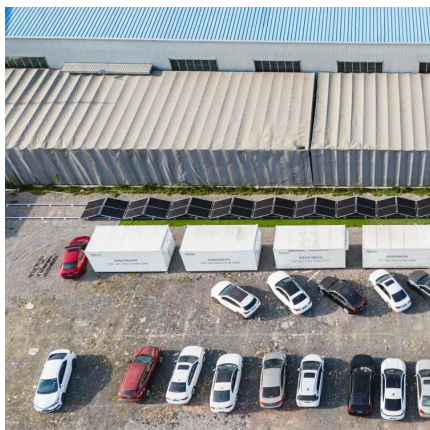
[Request Quote](#)

A Guide to solar panel ratings

This includes the panel's temperature of 25°C (77°F), light intensity of 1,000 watts per square meter (1,000 Wm²), which is basically the sun's position at noon, and the atmospheric density ...

[Request Quote](#)





What is Peak Power in Solar Panel?

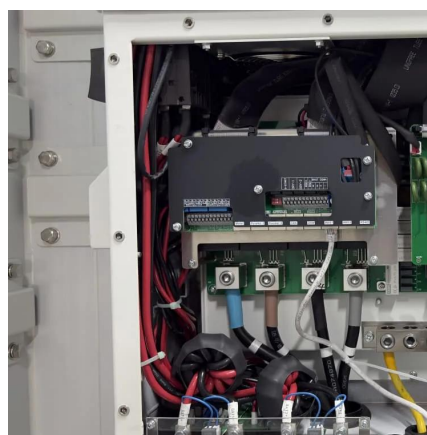
What is Watt-Peak (Wp)? Watt-peak (Wp) is a standard measure of a solar panel's maximum power output under ideal conditions, including ...

[Request Quote](#)

[Solar Panel Output per Square Meter: Efficiency ...](#)

Solar panels have become a cornerstone of renewable energy, but many wonder: How much power can a single square meter of solar panels actually produce? ...

[Request Quote](#)



Solar Panel Output per Square Meter: Efficiency Factors & Future

...

Solar panels have become a cornerstone of renewable energy, but many wonder: How much power can a single square meter of solar panels actually produce? Let's break down the ...

[Request Quote](#)

[Solar Power per Square Meter Calculator](#)

So, maximum solar power per square meter would be ~200 watts. Similarly, solar energy per square meter per day would be ~1000 watts. You ...

[Request Quote](#)



[How much solar energy is generated per square meter?](#)

So, maximum solar power per square meter would be ~200 watts. Similarly, solar energy per square meter per day would be ~1000 watts. You should also realize that solar cell ...

[Request Quote](#)



[Solar Panel Wattage Explained: How Many Watts Do ...](#)

On average, a solar panel produces around 150 to 200 watts per square meter. This can vary due to: Example: A 1.7 m² panel with 20% ...

[Request Quote](#)



[How To Calculate Solar Panel Output? - Glyde Solar](#)

3.How to calculate solar panel output amperage? Divide the power in watts by the voltage in volts to get the current in amps. For instance, if the solar panel wattage is rated at 175 watts and the ...

[Request Quote](#)

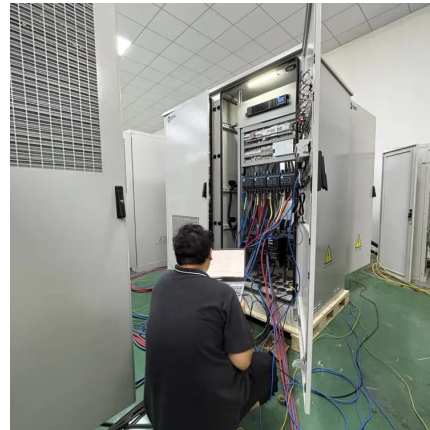




[Understanding Solar Panel Wattage for Maximum Output](#)

Solar panel wattage refers to the amount of power a solar panel can generate under standard test conditions. Measured in watts (W), it represents the panel's potential ...

[Request Quote](#)



[Solar Panel Capacity: A Full Guide to Choosing Solar ...](#)

Monocrystalline solar panels are the most powerful ones because they have solar cells of higher efficiency that can generate more power per ...

[Request Quote](#)

Solar Panel Output Calculator

Use this solar panel output calculator to find out the total output, production, or power generation from your solar panels per day, month, or in ...

[Request Quote](#)



[How Much Energy Can Solar Panels Generate?](#)

Standard residential solar panels yield power between 250 and 400 watts per hour when operating in optimal environmental conditions. Solar panels ...

[Request Quote](#)



[Solar Energy Per Square Meter: How Much Power ...](#)

This article explores solar energy per square meter and the various factors that influence energy output, such as location, climate, and panel ...

[Request Quote](#)



[Solar Rooftop Calculator: How Many Solar Panels ...](#)

Now, by average solar panel wattage per square foot, we can put a 10.35kW solar system on an 800 sq ft roof. This is how many solar panels you can put on this ...

[Request Quote](#)

[Guide to Solar Panel Sizes & Dimensions \(August 2025\)](#)

Solar panel size refers to the total amount of power a solar panel can generate over a period of time Solar panel dimensions refers to the physical size of a solar panel Solar ...

[Request Quote](#)





[Solar Panel Watts Per Square Meter Explained](#)

Learn how to measure solar panel efficiency using solar panel watts per square meter with this comprehensive guide.

[Request Quote](#)

The Output Watts Of Solar Panels

For example, a 1-square-meter panel might have a power output rating of 150 watts. Assuming 1,000 available watts, this panel converts 15 ...

[Request Quote](#)



[Solar Panel Output Calculator UK 2025 , The Eco ...](#)

Use our free online solar panel output calculator to see how much electricity you could produce each year with a solar panel system.

[Request Quote](#)

Contact Us

For catalog requests, pricing, or partnerships, please visit:
<https://www.espaciovet.es>