

# **There are many EMS communication base stations in Finland**





## Overview

---

Emergency medical services in (staggered primary care system) are service networks designed to assist patients with acute health problems. Patients are first sent to an , where a thorough assessment is conducted to determine the severity of the patients' illness or disability. Medical treatment is then administered accordingly. After the tests and treatment are c.

What are emergency medical services in Finland?

Emergency medical services in Finland (staggered primary care system) are service networks designed to assist patients with acute health problems. Patients are first sent to an Emergency Centre, where a thorough assessment is conducted to determine the severity of the patients' illness or disability.

How many EMS units are there in Finland?

ia, which was the fourth largest county in Finland in the year 2017, with a population of 411,856 . To place this in o the perspective of national provision of EMS, a short description of stakeholders is presented here. There are six ERCs in Finland that are responsible for the dispatch of EMS units . Paramedic field s.

What is the Emergency Services Academy Finland?

The Emergency Services Academy Finland also provides preparedness training for various authorities. Emergency Services Academy Finland In addition, the Helsinki Rescue School trains firefighters and sub-officers according to the needs of the City of Helsinki Rescue Department.

How many rescue departments are there in Finland?

There are 21 rescue departments in Finland, which are managed by municipalities and which carry out rescue service duties in their regions. Rescue departments cooperate with other authorities and with local residents and communities in the prevention of accidents and maintenance of security.

How will Kanta services help EMS missions in Finland?



longside VIRVE or to rely solely on future commercial networks that support PMR features [21,38,39]. The functionality of Kanta Services will play a crucial role in future EMS missions in Finland because with the introduction of the KJO system, the information will be shared through the Patient Data Repository to all stakeholders . In additi.

What is the emergency access number in Finland?

The emergency access number for the police, rescue, and fire departments in Finland is 112. Patient care progresses through each level of the Six Step Framework of care. Based on the risk assessment of the Emergency Response Center, a basic or therapeutic unit can be provided by a single or multiple-level unit.



## There are many EMS communication base stations in Finland

---



### [Chapter 5: Communication Flashcards , Quizlet](#)

Study with Quizlet and memorize flashcards containing terms like List the standard components of an EMS communications system., Explain the function of a repeater., Explain legal ...

[Request Quote](#)

### [Chapter 17: Communication and Documentation in EMS](#)

The components of an EMS communications system include base stations, mobile radios, and portable radios.

[Request Quote](#)



### WHAT IS EMS?

There are many hurdles to implementing these programs, including state laws that prohibit EMS from engaging in activities other than strictly emergency response.

[Request Quote](#)

### Chpt. 4 Flashcards , Quizlet

The role of dispatch in an EMS communications system is to obtain info about the nature of the emergency, direct the appropriate emergency



services to the scene and

[Request Quote](#)



## EMT Chapter 5 Flashcards , Quizlet

Explain legal considerations that apply to EMS communications. The FCC has jurisdiction over all radio operations nationally, including those in EMS systems. They license base stations, ...

[Request Quote](#)



## Chapter 5 Paramedic Flashcards , Quizlet

Study with Quizlet and memorize flashcards containing terms like Who regulates radio communications in the US, What two types of frequencies do land mobile radios operate on, ...

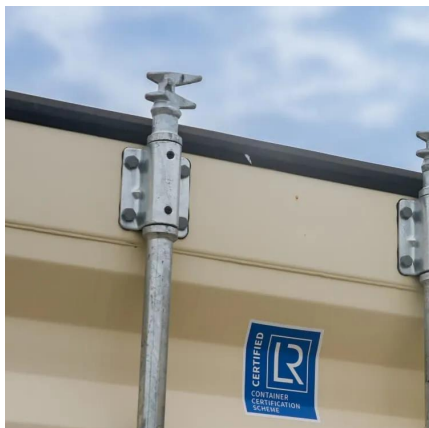
[Request Quote](#)



## Finland is a first responder in the global critical comms industry

Building on the multiagency co-operation in the 1990s, Critical Communications Finland (CCF) is a network through which the Finnish critical communications sector has continued to develop ...

[Request Quote](#)

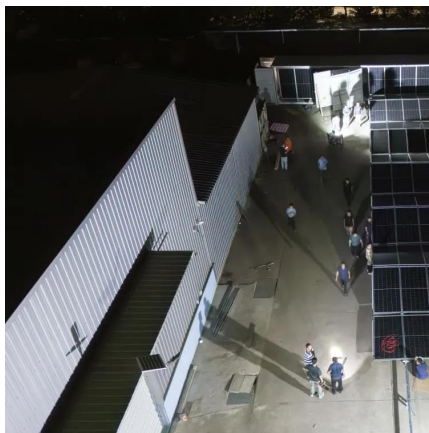




## [Human errors in emergency medical services: a ...](#)

Setting This study was carried out in Finland in 2020. At that time 21 hospital districts organized EMS in their areas. The hospital districts could provide ...

[Request Quote](#)



## [Rescue service operators and responsibilities](#)

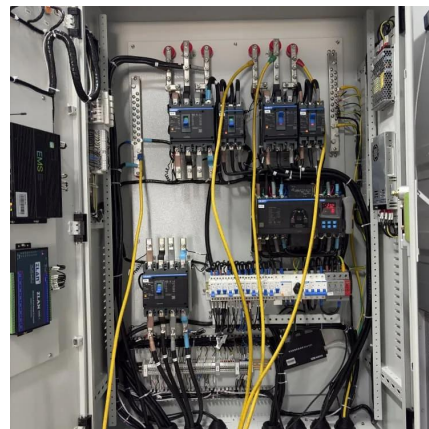
There are 21 regional rescue departments in Finland. Rescue departments carry out rescue service duties in their respective regions. Regional rescue services are responsible for the ...

[Request Quote](#)

## [Emergency medical services in Finland](#)

Emergency medical services in Finland (staggered primary care system) are service networks designed to assist patients with acute health problems. Patients are first sent to an Emergency ...

[Request Quote](#)



## **A deep dive: exploring the differences between two emergency ...**

In Finland, the EMS consists of two levels: basic and advanced. Basic-level ambulances primarily handle non-urgent assignments where the patient's condition is stable ...

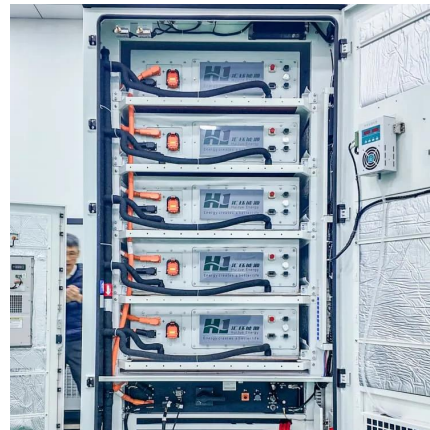
[Request Quote](#)



### [How to improve communication using technology in ...](#)

Identify current communication bottlenecks between EMS professionals and understand technological challenges behind them.

[Request Quote](#)



### [Emergency medical services in Finland](#)

Emergency medical services in Finland (staggered primary care system) are service networks designed to assist patients with acute health problems. Patients are first sent to an Emergency Centre, where a thorough assessment is conducted to determine the severity of the patients' illness or disability. Medical treatment is then administered accordingly. After the tests and treatment are c...

[Request Quote](#)

## **Draft Model State EMS System**

The index also lists major communications system assets (at least fixed radio consoles and mobile units, towers, base stations, and recording equipment) by date and type.

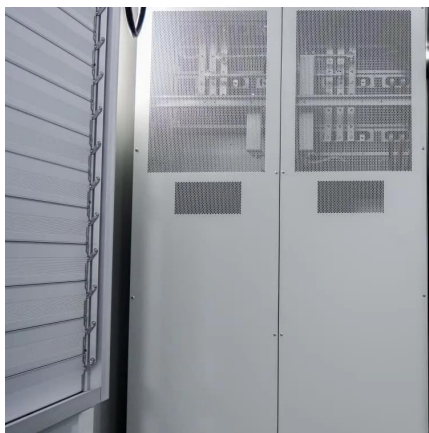
[Request Quote](#)



## Finland is a first responder in the global critical comms ...

Building on the multiagency co-operation in the 1990s, Critical Communications Finland (CCF) is a network through which the Finnish critical communications ...

[Request Quote](#)



## [Chapter 5: Communication Flashcards . Quizlet](#)

Study with Quizlet and memorize flashcards containing terms like base station, Where should base stations be located?, What are components of an Emergency ...

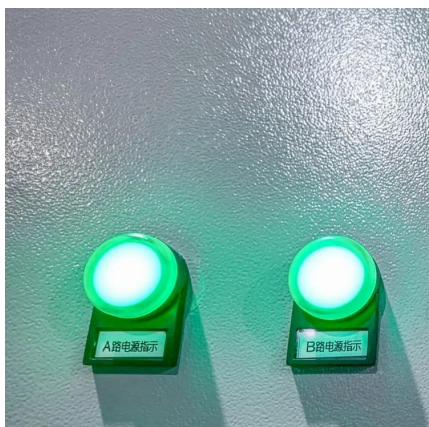
[Request Quote](#)



## [EMS Chapters 5-6 Flashcards . Quizlet](#)

Your EMS agency wants to increase the power output of the base station in order to cover a larger area without needing a repeater. Which federal agency is responsible for establishing ...

[Request Quote](#)





## [EMS System Communications - georgiaemsacademy](#)

The Powerful Base Station Radio The base station radio generally sites on a desk and is programmed to transmit with increased power to overcome any obstacles or distance ...

[Request Quote](#)



## **Railway Train Stations in Finland**

Did you know that there are more than 200 rail stations in Finland? Let us talk you through the facilities and services available at the most popular train stations ...

[Request Quote](#)



## **Home page , Rescue services**

There are 21 rescue departments in Finland, which are managed by municipalities and which carry out rescue service duties in their regions. Rescue departments cooperate with other ...

[Request Quote](#)

## **VIRVE**

In addition to police, firefighters and civil defence, also hospitals and medical professionals have also adopted group communications over Virve. For example, the Iisalmi hospital in Finland ...

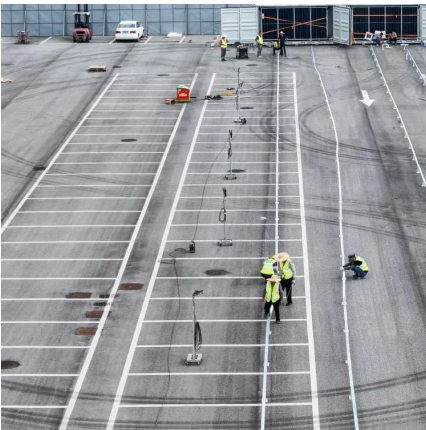
[Request Quote](#)



## Effective Communication in EMS Systems: A Comprehensive Guide

Definitions Base Station: A fixed radio unit with a transmitter and receiver. Cellular Telephone: A portable radio device that communicates through a network of repeater stations called ...

[Request Quote](#)



[A deep dive: exploring the differences between two ...](#)

In Finland, the EMS consists of two levels: basic and advanced. Basic-level ambulances primarily handle non-urgent assignments where the ...

[Request Quote](#)

## [EMT CHAPTER 17 COMMUNICATION AND](#)

[...](#)

Study with Quizlet and memorize flashcards containing terms like EMS radio systems consist of:, Base stations, Mobile radios and more.

[Request Quote](#)





## General Order Section 01

Utilization of EMRC Radio System EMRC, a statewide communications system coordinated by the Maryland Institute for Emergency Medical Services Systems (MIEMSS), is the primary ...

[Request Quote](#)

## [Implementation of a new emergency medical communication ...](#)

There used to be 45 municipality-based centers taking emergency calls in Finland. There were no official criteria for how these centers should be organized and all of these ...

[Request Quote](#)



## EMS Communications

These components are identified in EMS rules and the EMS Telecommunications Plan, which was last revised in July 2015. The Federal Communications Commission must license EMS radio ...

[Request Quote](#)

## Contact Us

---

For catalog requests, pricing, or partnerships, please visit:  
<https://www.espaciovet.es>