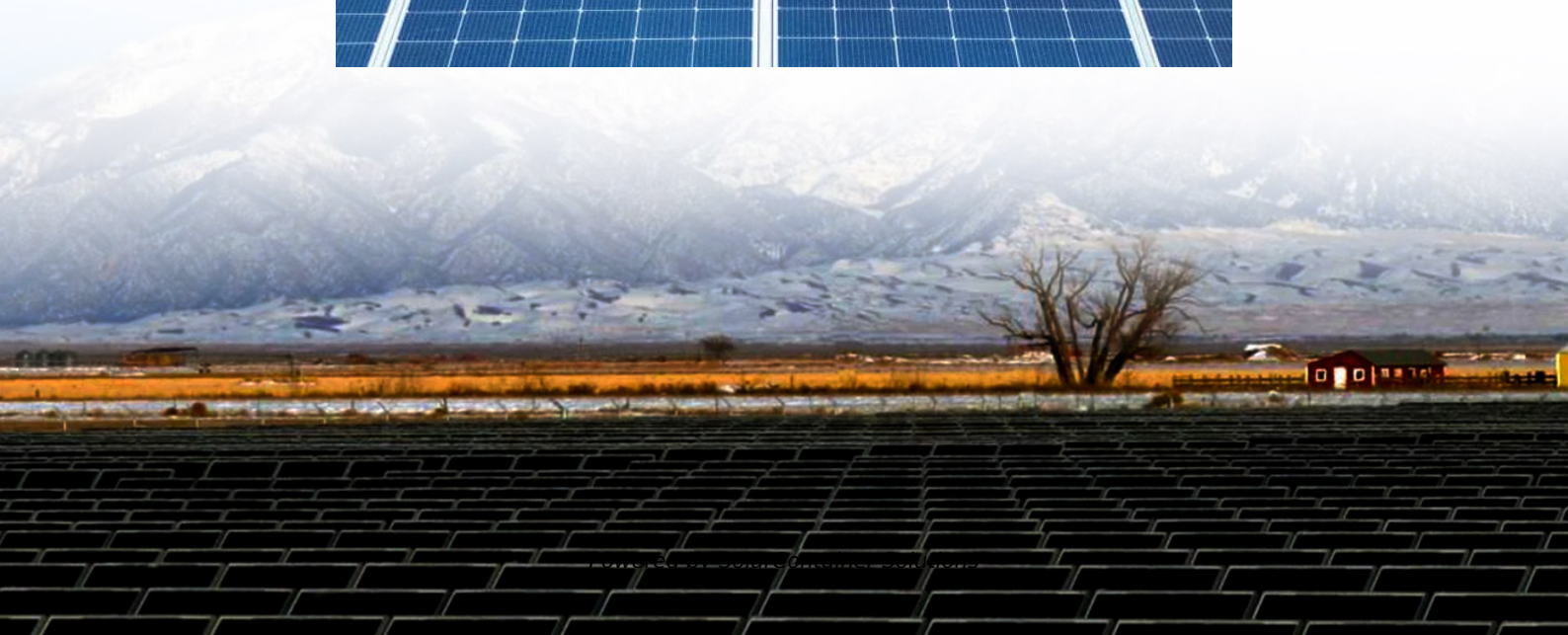


Two Two strings of lithium batteries in parallel





Overview

Yes, you can connect two lithium batteries in parallel to increase the overall capacity and current output of your battery system. However, it is crucial to ensure that the batteries are of the same type, capacity, and state of charge to avoid potential issues.



Two Two strings of lithium batteries in parallel



[Connect Lithium Batteries with Different Amp Hours Safely](#)

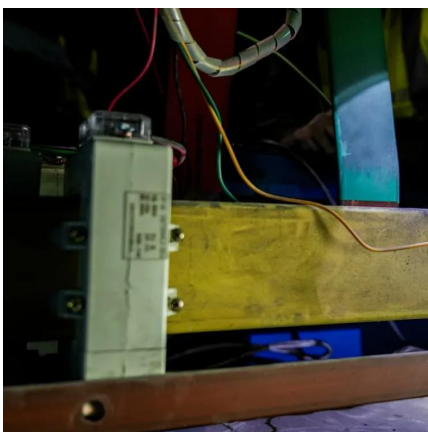
Learn to safely connect lithium batteries with different Ah ratings for solar, RV, and off-grid systems. Use BMS and parallel wiring to avoid overcharging.

[Request Quote](#)

[Can You Safely Connect Two Lithium Batteries in Parallel?](#)

Yes, you can connect two lithium batteries in parallel to increase capacity while maintaining voltage. Ensure both batteries have identical voltage, capacity, and state of charge to prevent ...

[Request Quote](#)



[HOW TO CONNECT BATTERIES IN SERIES AND PARALLEL](#)

By connecting two or more batteries in either series, series-parallel, or parallel, you can increase the voltage or amp-hour capacity, or even both; allowing for higher voltage or power hungry ...

[Request Quote](#)

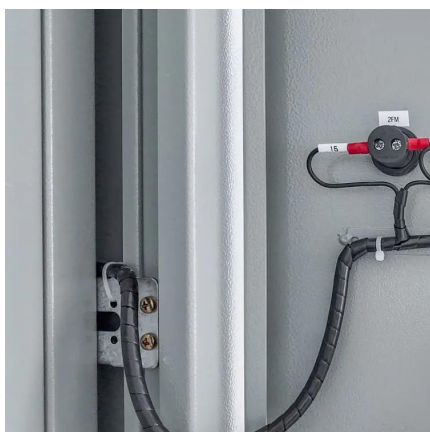
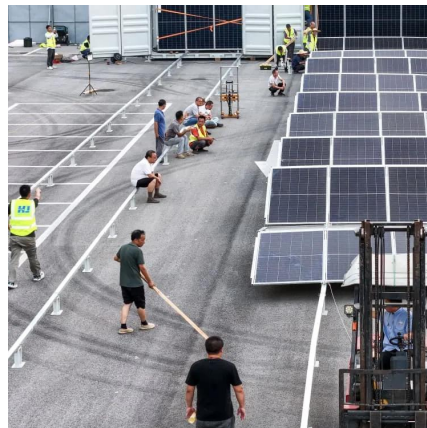
[Connecting Lithium Batteries in Parallel: What You ...](#)

Planning to connect lithium batteries in parallel? Read our essential guide to learn the right way to



set up your battery bank for more power.

[Request Quote](#)



[Balancing lithium batteries for parallel? : r/AskElectronics](#)

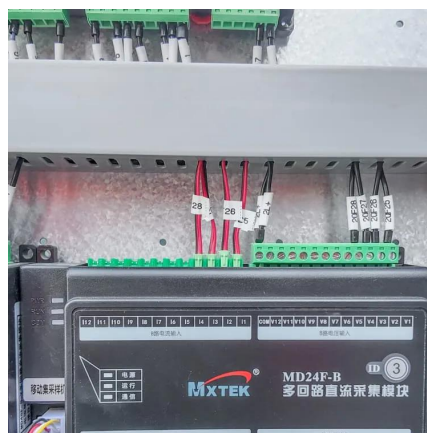
Any number of batteries in parallel is for all intents and purposes just one battery cell. Just make sure they're at the same voltage when you connect them to each other, so that they don't try to ...

[Request Quote](#)

[Can You Use Two Lithium Batteries in Parallel?](#)

Yes, you can connect two lithium batteries in parallel to increase the overall capacity and current output of your battery system. However, it is crucial to ensure that the ...

[Request Quote](#)



[How to Balance Lithium Batteries with Parallel BMS?](#)

When designing a lithium battery pack, engineers have two primary options: connecting individual cells directly in parallel or connecting strings of ...

[Request Quote](#)

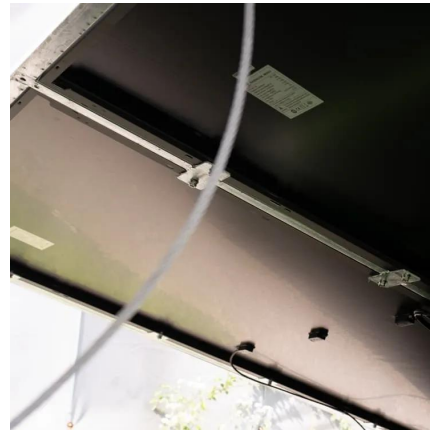




[Connecting Lithium Batteries in Parallel](#)

By following the step-by-step guide provided in this article and considering the necessary precautions, you can successfully connect lithium batteries in parallel while ensuring safety ...

[Request Quote](#)



How to Effectively Connect Batteries in Series and Parallel?

For example, two strings of four 12V batteries wired in series (48V each) can be connected in parallel to double capacity while maintaining 48V output. This layout suits large ...

[Request Quote](#)

[How to Connect Batteries in Series and Parallel?](#)

Explore that how to connect lithium batteries in series, parallel, and series-parallel for maximizing the performance and efficiency of your ...

[Request Quote](#)



[How many strings are 48V20AH lithium battery ...](#)

In the lithium battery pack, multiple lithium batteries are connected in series to obtain the required operating voltage. If what is needed is higher ...

[Request Quote](#)



How to Safely Connect Batteries in Parallel with Different Amp ...

Connecting batteries in parallel increases the total amp-hour capacity while maintaining the same voltage. However, using batteries with different amp hours can lead to ...

[Request Quote](#)



[Lithium Series, Parallel and Series and Parallel](#)

Connecting multiple lithium batteries into a string of batteries allows us to build a battery bank with the potential to operate at an increased voltage, or with increased capacity and runtime, or both.

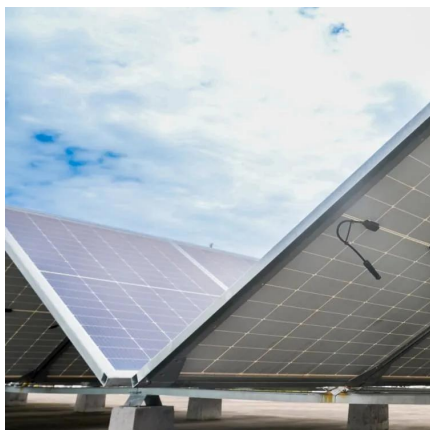
[Request Quote](#)

[How To Wire Lithium Batteries In Parallel Increase ...](#)

In this article, we will explain why you would want to wire lithium-ion batteries in parallel, how you wire them in series and how to charge battery ...

[Request Quote](#)





How many strings are 48V20AH lithium battery packs? How to ...

In the lithium battery pack, multiple lithium batteries are connected in series to obtain the required operating voltage. If what is needed is higher capacity and higher current, ...

[Request Quote](#)

[How To Connect Batteries In Series And Parallel?](#)

While researching lithium batteries, you've probably seen the terms series and parallel mentioned. We are frequently asked the questions like, ...

[Request Quote](#)



[Strings, Parallel Cells, and Parallel Strings](#)

Never leave two lithium ion strings permanently paralleled or leave multiple strings paralleled without monitoring systems and a means of automatic disconnection.

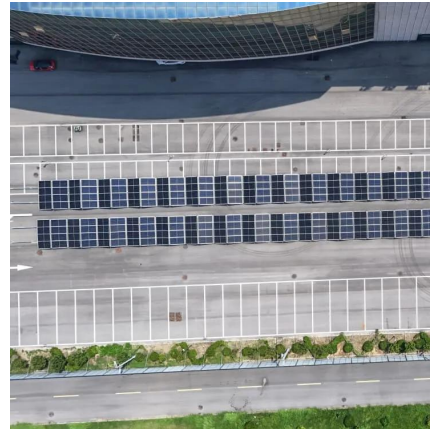
[Request Quote](#)



[Connecting Lithium Batteries in Parallel](#)

By following the step-by-step guide provided in this article and considering the necessary precautions, you can successfully connect lithium batteries in ...

[Request Quote](#)



[Connecting two battery banks in parallel](#)

I have 16 group 31 Power Queen 12.8v 100ah Lipo4 batteries connected in 4S/P to create a 400 ah 48v battery bank. Can I connect the two banks in parallel to make 800ah?

[Request Quote](#)



Connecting Lithium Batteries in Parallel: What You Need to Know

Planning to connect lithium batteries in parallel? Read our essential guide to learn the right way to set up your battery bank for more power.

[Request Quote](#)



What Should Be Noted When Connecting Two Battery Packs In Parallel

This video focuses on the key precautions for connecting two lithium battery packs in parallel, especially how to ensure consistent charging and discharging currents.

[Request Quote](#)





Battery Banks: Wiring Batteries in Parallel and Series

Four batteries are required in order to wire them together in this manner. Wire the batteries up in parallel first before joining them together to form a series. Only a single cable is needed ...

[Request Quote](#)



How to Balance Lithium Batteries with Parallel BMS?

When designing a lithium battery pack, engineers have two primary options: connecting individual cells directly in parallel or connecting strings of cells in parallel. Each ...

[Request Quote](#)

How to Balance Lithium Batteries in Parallel

Balancing lithium batteries in parallel involves measuring each battery's voltage before connection, ensuring they're within an acceptable range of each other, and then ...

[Request Quote](#)



Understanding Parallel Connections in DC Power Systems

For example, if you connect two 12V 100Ah lithium batteries in parallel, the total battery bank will still be 12V, but the capacity will increase to 200Ah, and the available Wh will ...

[Request Quote](#)



What Should Be Noted When Connecting Two Battery Packs In ...

This video focuses on the key precautions for connecting two lithium battery packs in parallel, especially how to ensure consistent charging and discharging currents.

[Request Quote](#)



Series, Parallel, and Series-Parallel Connections of Batteries

To ensure optimal battery performance and longevity, it is essential to properly match batteries with similar characteristics, including capacity, voltage, and chemistry, when connecting them ...

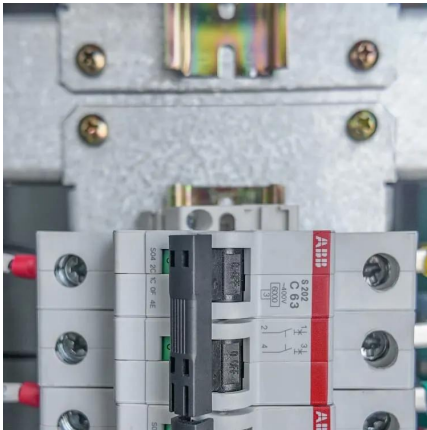
[Request Quote](#)

[Lithium Series, Parallel and Series and Parallel](#)

Balancing lithium batteries in parallel involves measuring each battery's voltage before connection, ensuring they're within an acceptable range of each other, and then ...

[Request Quote](#)





What Happens If You Connect Different Batteries in Parallel?

When you connect batteries in parallel, the voltage of each battery remains the same, but the current capacity is increased. This is because the total resistance of the circuit ...

[Request Quote](#)

Contact Us

For catalog requests, pricing, or partnerships, please visit:
<https://www.espaciovet.es>