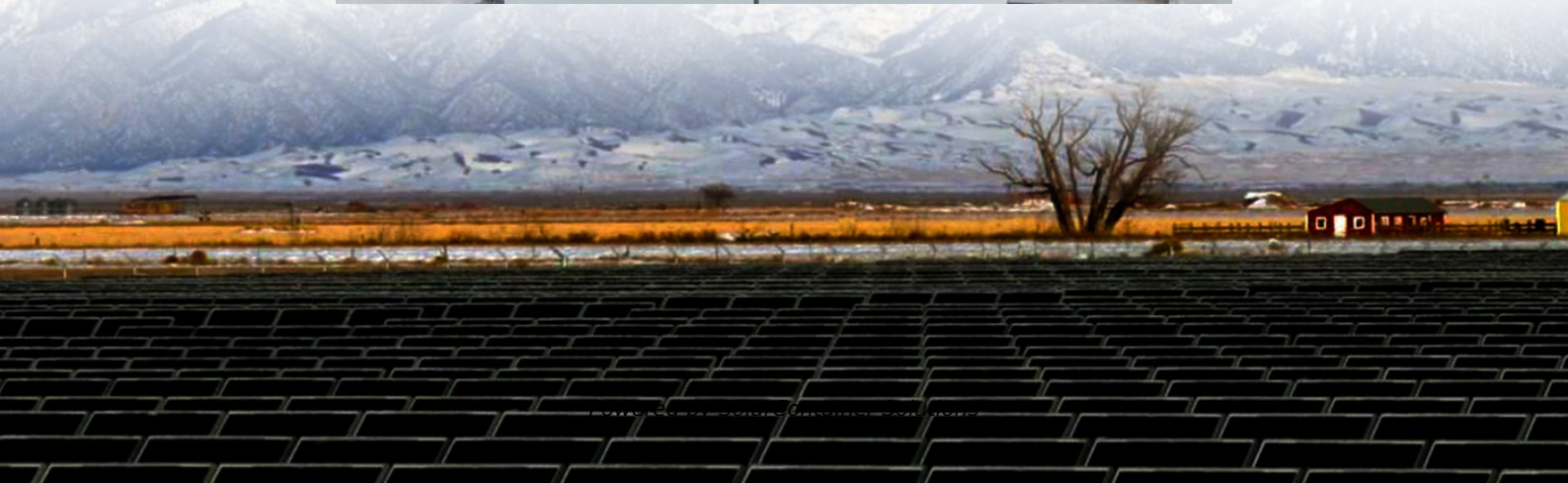


Weight of one square meter of monocrystalline photovoltaic panels





Overview

200-watt solar panels that are 10.56 kilograms and measure 1.64 meters long by 0.99 meters wide have an area of 1.63 square meters. They weigh 6.48 kilograms per square meter.

The wattages of solar panels can range greatly. While some solar panels power select appliances or RVs, others are powerhouses, and others can power.

Here are some quick facts about the average weight of solar panels with differing wattages: 1. 100-watt solar panels from 5 of the most popular brands average 18.8.

The roofs of current homes can safely support about 20 pounds per square foot. Including the mounting equipment, residential solar panels weigh about 3 to 4.

They weigh 6.48 kilograms per square meter. 60-cell solar panels that are 20 kilograms and measure 1.68 meters long by 1.01 meters wide have an area of 1.70 meters squared. Thus, they weigh 11.76 kilograms per square meter. How much does a polycrystalline solar panel weigh?

They weigh around 30-40 pounds (13-18 kilograms). Polycrystalline panels are cheaper than monocrystalline panels, but they are not as energy efficient. They usually weigh around 42 pounds (20 kilograms). The cheapest option are amorphous (thin-film) panels.

How to calculate solar panel weight?

The weight of the solar panel affects the installation and load-bearing design, so it must be calculated accurately. The calculation formula is as follows: Solar panel weight (kg) = area (m²) x specified weight (kg/m²) The weight is based on the solar panel size, material thickness, and bezel material.

Why do solar panels have a certain weight?

The most common solar panels are made of silicon, which is why they have a certain weight. However, there are also new solar panels made of lighter



materials, such as thin film solar panels (like thin film solar cell), which are much lighter. Secondly, the solar panel weights is also related to their size.

Are monocrystalline solar panels a good choice?

Monocrystalline solar panels are the top of the line, provide the highest efficiency, and are generally considered to have the best look to them. They're also typically the most expensive option because of the way they're made - a single pure crystal of silicon is inserted into molten silicon and slowly extracted.

How much weight do solar panels add to a roof?

How much weight do they add to your roof?

Solar panels weighing about 40 pounds will add about 2.8 pounds (1.27 kilograms) per square foot, while on flat roofs they add about 5 pounds (2.26 kilograms) per square foot. This can add up when you consider the average home will need at least 10 solar panels on its roof.

Are polycrystalline panels cheaper than monocrystalline panels?

Polycrystalline panels are cheaper than monocrystalline panels, but they are not as energy efficient. They usually weigh around 42 pounds (20 kilograms). The cheapest option are amorphous (thin-film) panels. These weigh a lot less than monocrystalline and polycrystalline panels at around 15 pounds (6 kilograms) per panel.



Weight of one square meter of monocrystalline photovoltaic panels



[Solar Photovoltaic Panel Sizes \[Full List And Other ...\]](#)

Are There Multiple Sizes of Solar Panels? Yes, many solar panel sizes are available on the market, and they can vary depending on the types of solar ...

[Request Quote](#)

[Solar Panels Size & Weight \(Including Commercial Dimensions\)](#)

Check out this full guide on solar panels size, weight, and other characteristics, including a comparison between Residential and Commercial panels.

[Request Quote](#)



Solar Panel Size and Wattage Chart: Standard Sizes & Uses for ...

Residential Solar Panel Sizes: Solar Power Calculations and How To Determine Solar Panel Size Selecting solar panels to be installed on your roof is not just as easy as ...

[Request Quote](#)

[Solar Panels Size & Weight \(Including Commercial ...\)](#)

Check out this full guide on solar panels size, weight, and other characteristics, including a



comparison between Residential and Commercial
...

[Request Quote](#)



How much do solar panels weigh?

Most of the solar panels available on the market, consisting of 60 cells per panel, weigh about 40 pounds (18 kilograms). However, some solar panels can weigh up to 50 ...

[Request Quote](#)

Weight per square meter of monocrystalline silicon solar panels

The wattages of solar panels can range greatly. While some solar panels power select appliances or RVs, others are powerhouses, and others can power industrial buildings. These solar ...

[Request Quote](#)



[Solar Panel Dimensions Sizes and Wattage](#)

In terms of dimensions, a 300w monocrystalline or polycrystalline solar panel typically has a length of around 1.6 meters and a width of 1 meter. However, these dimensions ...

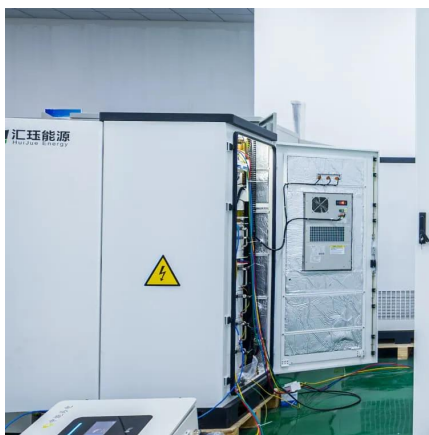
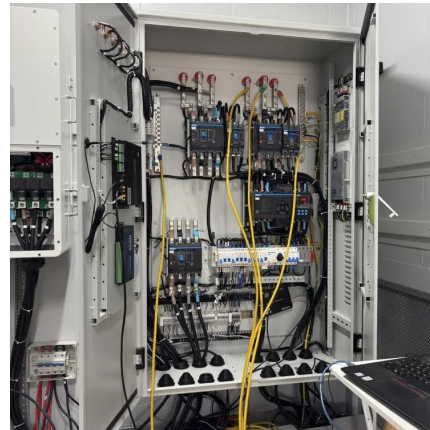
[Request Quote](#)



[Understanding the Carbon Footprint of Solar Panel ...](#)

For instance, producing one square meter of PV modules demands huge energy. It prompts emissions from 37.3 to 72.2 g CO₂e/kWh when installed in regions with high solar ...

[Request Quote](#)



[Detailed analysis of solar panel weight and calculation](#)

The solar panel weight depends on a number of factors, including panel size, material, and construction. The most common solar panels are made of silicon, which is why ...

[Request Quote](#)

[Solar Panel Dimensions Sizes and Wattage](#)

In terms of dimensions, a 300w monocrystalline or polycrystalline solar panel typically has a length of around 1.6 meters and a width of 1 meter. ...

[Request Quote](#)



How Much Do Two Square Meters of Monocrystalline Silicon ...

When planning a solar installation, one question often overlooked is: "How much do two square meters of monocrystalline silicon photovoltaic panels weigh?" This detail might seem minor, ...

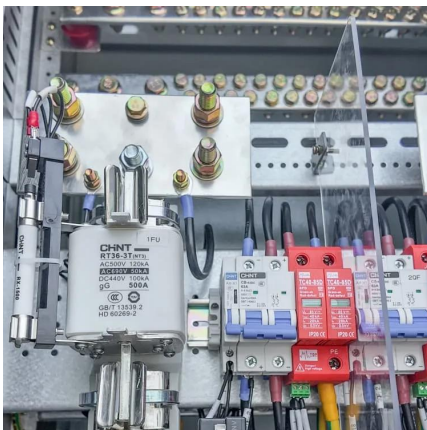
[Request Quote](#)



How much does solar energy weigh per square meter?

To comprehend the density of solar energy in relation to a square meter, it is essential to first distinguish between energy generation (the output ...

[Request Quote](#)



Solar Panel Size And Weight: A Comprehensive Guide

When considering residential solar panels, typical configurations consist of 60 cells measuring approximately 3.25 feet by 5.5 feet. These ...

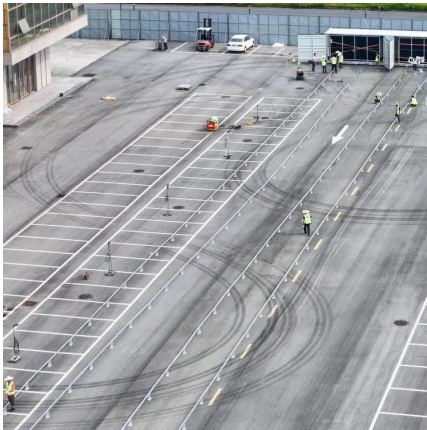
[Request Quote](#)

How Much Do Solar Panels Weigh?

Installers and property owners can make informed decisions based on their specific needs by examining the average weight range of common solar panel types such as ...

[Request Quote](#)





[Solar Panels Sizes and Weights \(All Sizes\)](#)

200-watt solar panels that are 10.56 kilograms and measure 1.64 meters long by 0.99 meters wide have an area of 1.63 square meters. They weigh 6.48 kilograms per square ...

[Request Quote](#)

[Guide to Solar Panel Sizes & Dimensions \(August 2025\)](#)

Solar panel size refers to the total amount of power a solar panel can generate over a period of time Solar panel dimensions refers to the ...

[Request Quote](#)



[What are monocrystalline solar panels?](#)

What are monocrystalline solar panels?
Monocrystalline solar panels are a type of solar panel design that uses a single silicon crystal to capture sunlight and generate energy. ...

[Request Quote](#)

How Much Do Two Square Meters of Monocrystalline Silicon Photovoltaic

When planning a solar installation, one question often overlooked is: "How much do two square meters of monocrystalline silicon photovoltaic panels weigh?" This detail might seem minor, ...

[Request Quote](#)



Solar Panel Weight

Depending on the design and materials used, this weight can change, but it typically ranges from 2 to 4 pounds per square foot of solar panels (10 to 20 kilograms per square meter).

[Request Quote](#)



How much do solar panels weigh?

Most of the solar panels available on the market, consisting of 60 cells per panel, weigh about 40 pounds (18 kilograms). However, some solar ...

[Request Quote](#)



Solar Panel Sizes and Weights

A typical solar panel size is about 1 metre wide and can be 1.6 m to 2 m long, while the thickness usually ranges between 3 to 4 cm. Typical solar panel weight ranges from 19 kg ...

[Request Quote](#)





Solar Panel

Monocrystalline solar panels are made from single-crystal silicon, resulting in their distinctive dark black hue. This uniform structure, with fewer ...

[Request Quote](#)



Weight per square meter of monocrystalline silicon solar panels

king those matters into consideration, we'll cut to the chase. Here are the average solar panel weight numbers: Residential 60-cell panel = 40 pounds; Residential or commercial

[Request Quote](#)

[How much does one square meter of solar energy ...](#)

How much does one square meter of solar energy weigh? A single square meter of solar panels typically weighs around 15 to 20 kilograms, ...

[Request Quote](#)



[How much does one square meter of solar energy weigh?](#)

How much does one square meter of solar energy weigh? A single square meter of solar panels typically weighs around 15 to 20 kilograms, depending on the type and material ...

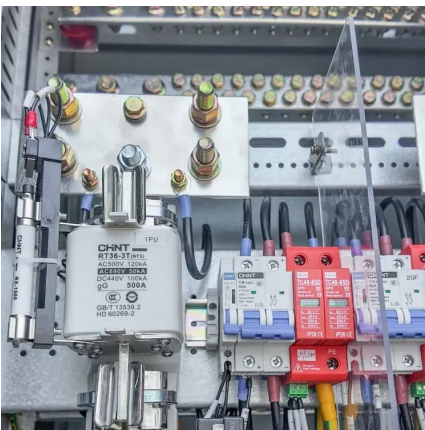
[Request Quote](#)



400 watt solar panels for sale

The dimensions of an average 400 Watt solar panel are about 79" X 39" X 1.4". The 400 watt solar panel size and power output ratio make it a ...

[Request Quote](#)



[Monocrystalline Solar Panels: 2025 Costs & How ...](#)

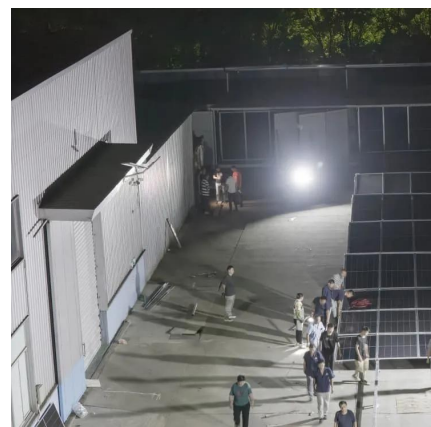
Monocrystalline solar panels are the top choice for homeowners looking for high efficiency and long-term value. Made from a single crystal of ...

[Request Quote](#)

[Solar Panel Sizes and Wattage: Everything You Need ...](#)

They are 30% larger than residential ones and normally measure around 2.1 meters tall and 1.1 meters wide, covering an area of about 2.3 ...

[Request Quote](#)





[Solar Panel Size And Weight: A Comprehensive Guide](#)

When considering residential solar panels, typical configurations consist of 60 cells measuring approximately 3.25 feet by 5.5 feet. These panels cover an area of 17.62 square ...

[Request Quote](#)

Contact Us

For catalog requests, pricing, or partnerships, please visit:
<https://www.espaciovet.es>