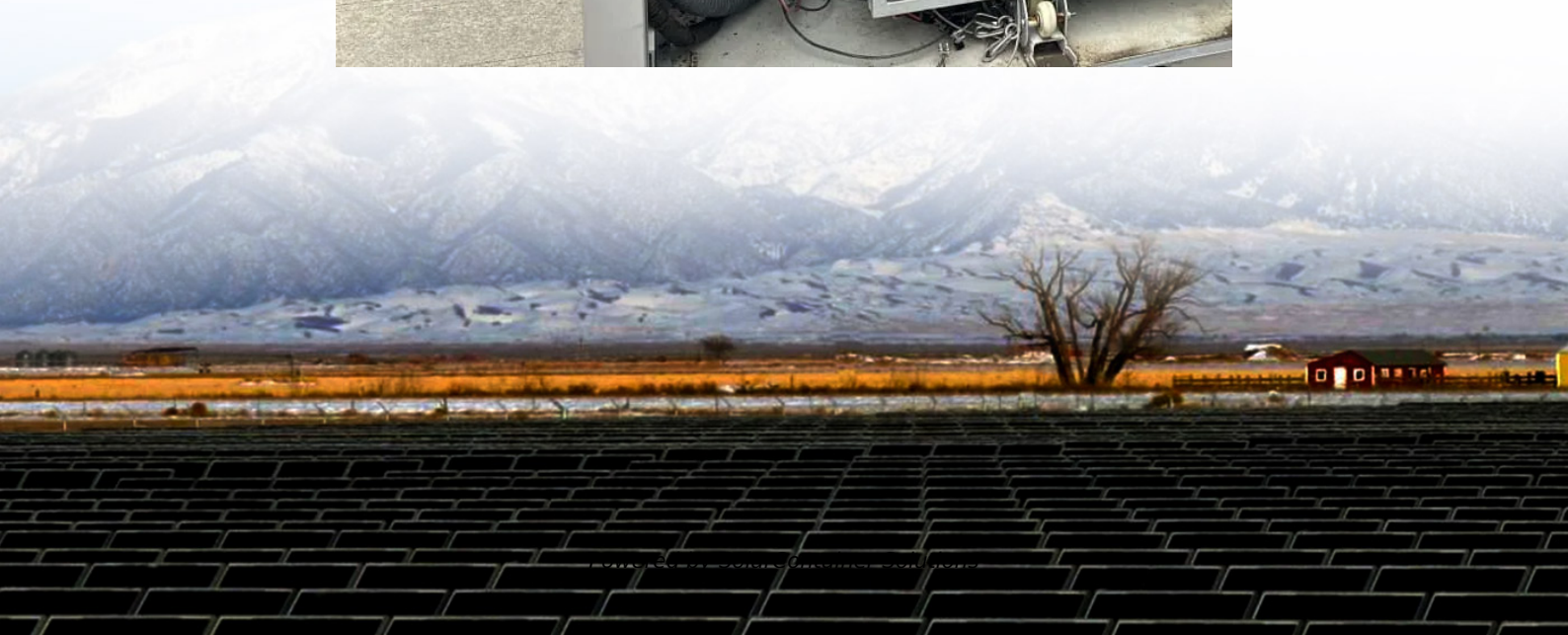


# **What are the communication power equipment base stations**





## Overview

---

What is a base station in a telecommunications network?

A base station is a critical component in a telecommunications network. A fixed transceiver that acts as the central communication hub for one or more wireless mobile client devices. In the context of cellular networks, it facilitates wireless communication between mobile devices and the core network.

Why are base stations important?

Base stations are the backbone of modern telecommunications networks, providing the essential infrastructure for wireless communication. They enable mobile devices to connect to the network, manage traffic efficiently, and ensure robust and reliable connectivity across wide areas.

What equipment does a base station need?

**Control Equipment:** Base stations include control equipment that manages the communication protocols and coordinates the interaction between mobile devices and the network. This equipment ensures that data is routed correctly and efficiently. **Power Supply:** A reliable power supply is essential for the continuous operation of a base station.

How does a base station communicate with a client device?

Generally, if client devices wanted to communicate to each other, they would communicate both directly with the base station and do so by routing all traffic through it for transmission to another device. Base stations in cellular telephone networks are more commonly referred to as cell towers.

How do base stations work?

Base stations use antennas mounted on cell towers to send and receive radio signals to and from mobile devices within their coverage area. This communication enables users to make voice calls, send texts, and access data services, connecting them to the wider world. Network Management and



Optimization.

What are the different types of base stations?

Some basic types of base stations are as follows: Macro-base stations are tall towers ranging from 50 to 200 feet in height, placed at strategic locations to provide maximum coverage in a given area. Those are equipped with large towers and antennas that transmit and receive radio signals from wireless devices.



## What are the communication power equipment base stations

---



### What Is A Base Station?

A base station is a piece of equipment that facilitates wireless communication between devices and a network. It contains the necessary hardware and software to transmit ...

[Request Quote](#)

### [Communication Base Station Energy Solutions](#)

Many remote areas lack access to traditional power grids, yet base stations require 24/7 uninterrupted power supply to maintain stable communication ...

[Request Quote](#)



### [What is a Base Station in Telecommunications?](#)

Base stations are the backbone of modern telecommunications networks, providing the essential infrastructure for wireless communication. They enable ...

[Request Quote](#)



## Types of Base Stations

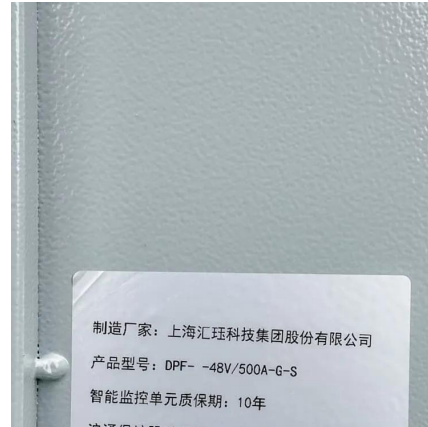
Base stations are one of the widely used components in the field of wireless communication and networks. It is an access





point or base point of a ...

[Request Quote](#)



## [Communication Base Station Energy Solutions](#)

Many remote areas lack access to traditional power grids, yet base stations require 24/7 uninterrupted power supply to maintain stable communication services.

[Request Quote](#)

## [What is a Base Station in Telecommunications?](#)

Base stations are the backbone of modern telecommunications networks, providing the essential infrastructure for wireless communication. They enable mobile devices to connect to the ...

[Request Quote](#)



## **Base Stations**

The present-day tele-space is incomplete without the base stations as these constitute an important part of the modern-day scheme of wireless ...

[Request Quote](#)



## [The Base Station in Wireless Communications: The ...](#)

Base station, also known as BTS (Base Transceiver Station), is a key device in wireless communication systems such as GSM. Equipped with ...

[Request Quote](#)



## **A Beginner's Guide to Understanding Telecom Power Supply ...**

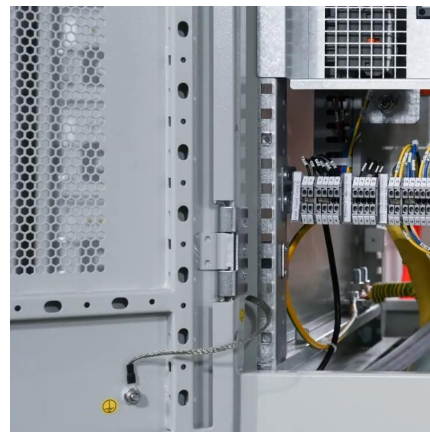
Telecom power supply systems serve as the backbone of telecommunication networks, ensuring that equipment operates seamlessly. These systems provide the ...

[Request Quote](#)

## [Basic components of a 5G base station](#)

The 5G base station is composed of a power supply system and communication equipment [4], in addition to some auxiliary equipment such as air ...

[Request Quote](#)



## [Best Ham Radio Base Station Kits for Effective ...](#)

For those looking to set up a reliable communication system at home, ham radio base station kits are a great solution. A base station kit usually includes ...

[Request Quote](#)



## Cooling for Mobile Base Stations and Cell Towers

Application Overview Bulky compressor-based air conditioners have traditionally been used for removing heat generated by communications equipment installed in base station and cell ...

[Request Quote](#)



## **BS (Base Station)**

A base station (BS) is a key component of modern wireless communication networks, providing the interface between wireless devices and the network infrastructure. In ...

[Request Quote](#)

## **base station in 5g**

A 5G base station is a complex system that integrates advanced RF technology, digital signal processing, and network architecture to deliver high-performance wireless ...

[Request Quote](#)







## Smart BaseStation

Smart BaseStation(TM) is an intelligent communication mast that can provide remote power for a range of DC and AC off-grid applications eg rural broadband.

[Request Quote](#)

## Communication base station

Communication base stations are one of the core nodes of modern communication networks and require uninterrupted power supply to maintain signal coverage and data transmission.

[Request Quote](#)



## Types of Base Stations

Base stations are one of the widely used components in the field of wireless communication and networks. It is an access point or base point of a particular area for ...

[Request Quote](#)

## [Base Stations and Cell Towers: The Pillars of Mobile ...](#)

Base stations use antennas mounted on cell towers to send and receive radio signals to and from mobile devices within their coverage area.

...

[Request Quote](#)





## Multiuser Communications With Movable-Antenna Base Station: ...

Movable antenna (MA) is an innovative technology that facilitates the repositioning of antennas within the transmitter/receiver area to enhance channel conditions and communication ...

[Request Quote](#)



## Base Stations and Cell Towers: The Pillars of Mobile Connectivity

Base stations use antennas mounted on cell towers to send and receive radio signals to and from mobile devices within their coverage area. This communication enables ...

[Request Quote](#)



## base transceiver station components

A Base Transceiver Station (BTS) is a fundamental component of a mobile cellular network, responsible for establishing a communication link ...

[Request Quote](#)





## [A Beginner's Guide to Understanding Telecom Power ...](#)

Telecom power supply systems serve as the backbone of telecommunication networks, ensuring that equipment operates seamlessly. ...

[Request Quote](#)



## **Communication base station**

Communication base stations are one of the core nodes of modern communication networks and require uninterrupted power supply to maintain ...

[Request Quote](#)

## [5G Network Equipment Manufacturers: Modem, Base Station, ...](#)

Explore leading 5G equipment manufacturers for modems, base stations, RAN, and core networks. Discover vendors enhancing network speed and efficiency.

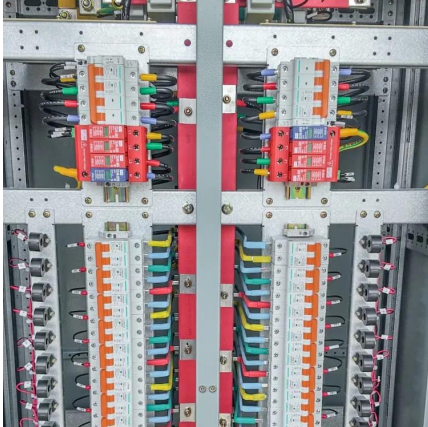
[Request Quote](#)



## **Microsoft Word**

The Defense Communications System is a global communications network operated by the Army, Navy and Air Force, but controlled by the Defense Communications Agency. The use of single ...

[Request Quote](#)



## Base Stations

The present-day tele-space is incomplete without the base stations as these constitute an important part of the modern-day scheme of wireless communications. They are ...

[Request Quote](#)



## What is a base station?

In telecommunications, a base station is a fixed transceiver that is the main communication point for one or more wireless mobile client devices. A base station serves as ...

[Request Quote](#)

## [Guide for the Selection of Communication Equipment for ...](#)

2. OVERVIEW OF COMMUNICATION SYSTEMS A communication system is made up of devices that employ one of two communication methods (wireless or wired), different types of ...

[Request Quote](#)





### [VHF Base Stations for Long-Range Communication](#)

In professional communication, VHF base stations play a pivotal role in enabling long-range, reliable communication across industries. From emergency response to industrial operations, ...

[Request Quote](#)

### [What is Telecommunication Base Station , China Hop](#)

Generally speaking, a base station consists of three antennas, each transmitting signals in a 120 degree direction towards the surrounding area, which together provide seamless coverage of ...

[Request Quote](#)



## **Contact Us**

---

For catalog requests, pricing, or partnerships, please visit:  
<https://www.espaciovet.es>