

What communication does the base station use





Overview

In the area of wireless computer networking, a base station is a radio receiver/transmitter that serves as the hub of the local wireless network, and may also be the gateway between a wired network and the wireless network. It typically consists of a low-power transmitter and .

A base station represents an access point for a wireless device to communicate within its coverage area. It usually connects the device to other networks or devices through a dedicated high bandwidth wire of fiber optic connection. What is a base station in a telecommunications network?

A base station is a critical component in a telecommunications network. A fixed transceiver that acts as the central communication hub for one or more wireless mobile client devices. In the context of cellular networks, it facilitates wireless communication between mobile devices and the core network.

Why are base stations important?

Base stations are the backbone of modern telecommunications networks, providing the essential infrastructure for wireless communication. They enable mobile devices to connect to the network, manage traffic efficiently, and ensure robust and reliable connectivity across wide areas.

How do base stations work?

Base stations use antennas mounted on cell towers to send and receive radio signals to and from mobile devices within their coverage area. This communication enables users to make voice calls, send texts, and access data services, connecting them to the wider world. Network Management and Optimization.

Why are base stations important in cellular communication?

Base stations are important in the cellular communication as it facilitate seamless communication between mobile devices and the network communication. The demand for efficient data transmission are increased as we are advancing towards new technologies such as 5G and other data intensive applications.



How does a base station communicate with a client device?

Generally, if client devices wanted to communicate to each other, they would communicate both directly with the base station and do so by routing all traffic through it for transmission to another device. Base stations in cellular telephone networks are more commonly referred to as cell towers.

Is a base station a transmitter or broadcast point?

Base stations are generally a transceiver, capable of sending and receiving wireless signals; otherwise, if they only transmitted signals out, they would be considered a transmitter or broadcast point. A base station will have one or more radio frequency (RF) antennas to transmit and receive RF signals to other devices.



What communication does the base station use



Base transceiver station

A base transceiver station (BTS) or a baseband unit[1] (BBU) is a piece of equipment that facilitates wireless communication between user equipment (UE) and a network.

[Request Quote](#)

What is a base station?

In telecommunications, a base station is a fixed transceiver that is the main communication point for one or more wireless mobile client devices. A base station serves as ...

[Request Quote](#)



[What Are Base Station Antennas? Complete Guide](#)

Base station antennas play a fundamental role in wireless communication systems by enabling the signal transmission and reception ...

[Request Quote](#)

[The Common Misconceptions Around Base and ...](#)

Furthermore, when using a base and rover system, you can set up the base once, and



connect as many rovers as you want whenever you want. ...

[Request Quote](#)



Base station

OverviewComputer networkingLand surveyingWireless communicationsSee also

In the area of wireless computer networking, a base station is a radio receiver/transmitter that serves as the hub of the local wireless network, and may also be the gateway between a wired network and the wireless network. It typically consists of a low-power transmitter and wireless router.

[Request Quote](#)

Base Station

Importance A base station is a crucial aspect of communication infrastructure, playing a pivotal role in wireless and cellular communication. It acts as a central hub for the ...

[Request Quote](#)



What is a 5G Base Station?

These stations use advanced radio technology to manage the high frequencies and bandwidths that characterize 5G, ensuring that data is ...

[Request Quote](#)



What is a Base Station in Telecommunications?

Base stations are the backbone of modern telecommunications networks, providing the essential infrastructure for wireless communication. They enable mobile devices to connect to the ...

[Request Quote](#)



Base Stations and Cell Towers: The Pillars of Mobile ...

Base stations and cell towers are critical components of cellular communication systems, serving as the infrastructure that supports seamless ...

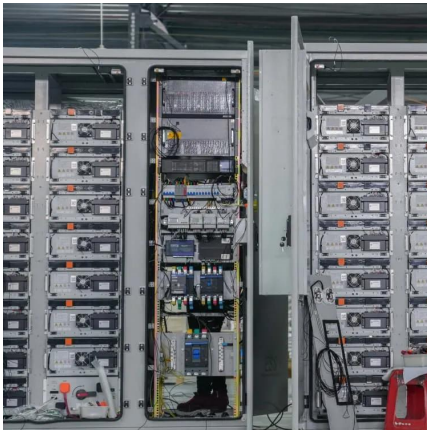
[Request Quote](#)

Base Stations

Base stations form a key part of modern wireless communication networks because they offer some crucial advantages, such as wide coverage, continuous communications and ...

[Request Quote](#)





[What Does SimpliSafe Base Station Do? \(A ...](#)

The SimpliSafe Base Station is the central hub of the SimpliSafe home security system. It connects all the components of the system together, such as ...

[Request Quote](#)

[China claims first 5G base stations for military use](#)

The 5G base station was developed by China Mobile Communications Group and the Chinese People's Liberation Army China has ...

[Request Quote](#)



[Base Station's Role in Wireless Communication Networks](#)

The base station transmits and receives signals, ensuring seamless communication over radio frequencies. In essence, it acts as the intermediary between the user and the network, ...

[Request Quote](#)

[What Does a Base Station Do and Why Is It Essential for ...](#)

A base station is a fixed point of communication between mobile devices and the wider telecom network. It transmits and receives radio signals, enabling your phone to access ...

[Request Quote](#)



[What is Telecommunication Base Station , China Hop](#)

What is telecommunication base station, let's learn about communication base stations. China telecom equipment supplier.

[Request Quote](#)



[Air Force Tactical Communication Flashcards , Quizlet](#)

Study with Quizlet and memorize flashcards containing terms like What position does the function Knob needs to be placed in, before connecting the battery?, Once the radio is turned on and ...

[Request Quote](#)



Base Station System Structure

2 Base Station Background The intent of this section is to explore the role of base stations in communications systems, and to develop a reference model that can be used to describe and ...

[Request Quote](#)





What Is A Base Station?

A base station is an integral component of wireless communication networks, serving as a central point that manages the transmission and reception of signals between ...

[Request Quote](#)



Base Stations and Cell Towers: The Pillars of Mobile Connectivity

Base stations and cell towers are critical components of cellular communication systems, serving as the infrastructure that supports seamless mobile connectivity. These ...

[Request Quote](#)

[Understanding the Basics: What is a Base ...](#)

In today's digitally connected world, understanding the technology that makes communication possible is more important than ever. One key ...

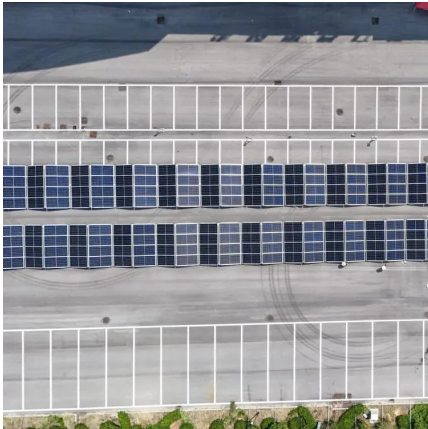
[Request Quote](#)



Base station

In the area of wireless computer networking, a base station is a radio receiver/transmitter that serves as the hub of the local wireless network, and may also be the gateway between a wired ...

[Request Quote](#)



The Base Station in Wireless Communications: The Key to ...

Base station, also known as BTS (Base Transceiver Station), is a key device in wireless communication systems such as GSM. Equipped with an electromagnetic wave ...

[Request Quote](#)



What is a base station and how are 4G/5G base stations different?

A base station is referred to a stationary trans-receiver used in telecommunications that serves as the primary hub for connectivity of wireless device ...

[Request Quote](#)

What is a Base Station in Telecommunications?

Base stations are the backbone of modern telecommunications networks, providing the essential infrastructure for wireless communication. They enable ...

[Request Quote](#)





What Is the Role of a Base Station in Wireless Communication?

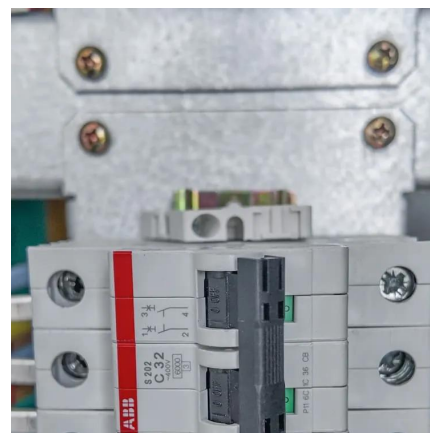
Introduction to Base Stations in Wireless Communication Base stations are critical components in wireless communication networks, serving as the intermediary between mobile ...

[Request Quote](#)

[What is a base station and how are 4G/5G base ...](#)

A base station is referred to a stationary trans-receiver used in telecommunications that serves as the primary hub for connectivity of wireless ...

[Request Quote](#)



base station

Base stations come in various forms, each serving a specific purpose: Macrocell: Large, high-power base stations used for wide coverage areas, often found in rural areas or for long ...

[Request Quote](#)

[What Are Base Station Antennas? Complete Guide](#)

Base station antennas play a fundamental role in wireless communication systems by enabling the signal transmission and receipt between the base stations and mobile devices.

[Request Quote](#)



[How does a phone connect to a base station? - WisdomAnswer](#)

The base station, a wireless system, uses microwave radio communication. How does the cell phone communication system work? Mobile Phone Communication. How it ...

[Request Quote](#)

Contact Us

For catalog requests, pricing, or partnerships, please visit:
<https://www.espaciovet.es>