

# **What communication equipment is inside the base station**





## Overview

---

A base transceiver station (BTS) or a baseband unit (BBU) is a piece of equipment that facilitates between (UE) and a network. UEs are devices like (handsets), phones, computers with connectivity, or antennas mounted on buildings or telecommunication towers. The network can be that of any of the wireless communication technologies like , , , or other

Equipped with an electromagnetic wave antenna, often placed on a tall mast, the base station enables communication between mobile terminals (such as mobile phones or pagers) and the fixed part of the digital telecommunications network. What is a base station in telecommunications?

In telecommunications, a base station is a fixed transceiver that is the main communication point for one or more wireless mobile client devices. A base station serves as a central connection point for a wireless device to communicate.

How does a base station communicate with a client device?

Generally, if client devices wanted to communicate to each other, they would communicate both directly with the base station and do so by routing all traffic through it for transmission to another device. Base stations in cellular telephone networks are more commonly referred to as cell towers.

How does a base station work?

It usually connects the device to other networks or devices through a dedicated high bandwidth wire of fiber optic connection. Base stations typically have a transceiver, capable of sending and receiving wireless signals; Otherwise if they only send the trailer it will be considered a transmitter or broadcast point only.

Is a base station a transmitter or broadcast point?

Base stations are generally a transceiver, capable of sending and receiving wireless signals; otherwise, if they only transmitted signals out, they would be considered a transmitter or broadcast point. A base station will have one or more radio frequency (RF) antennas to transmit and receive RF signals to



other devices.

Why are base stations important in cellular communication?

Base stations are important in the cellular communication as it facilitate seamless communication between mobile devices and the network communication. The demand for efficient data transmission are increased as we are advancing towards new technologies such as 5G and other data intensive applications.

What are the components of a base station?

**Power Supply:** The power source provides the electrical energy to base station elements. It often features auxiliary power supply mechanisms that guarantee operation in case of lost or interrupted electricity, during blackouts. **Baseband Processor:** The baseband processor is responsible for the processing of the digital signals.



## What communication equipment is inside the base station

---



### [The Base Station in Wireless Communications: The ...](#)

Equipped with an electromagnetic wave antenna, often placed on a tall mast, the base station enables communication between mobile terminals ...

[Request Quote](#)

### **base transceiver station components**

A Base Transceiver Station (BTS) is a fundamental component of a mobile cellular network, responsible for establishing a communication link with mobile devices in its coverage area ...

[Request Quote](#)



### [What is Telecommunication Base Station , China Hop](#)

Generally speaking, a base station consists of three antennas, each transmitting signals in a 120 degree direction towards the surrounding area, which together provide seamless coverage of ...

[Request Quote](#)

### [Base Transceiver Station: Core Functionality Explained](#)

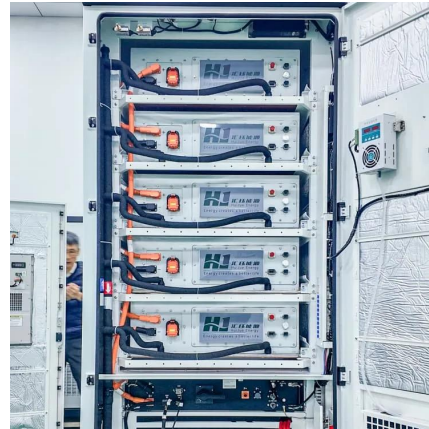
Discover what a Base Transceiver Station is and how it's pivotal in mobile communication





networks. Unlock the essentials of BTS functionality here.

[Request Quote](#)



## Understanding the Basics of a Base Transceiver Station: A ...

At the heart of these networks are Base Transceiver Stations (BTS), which facilitate wireless communication by transmitting and receiving radio signals between mobile ...

[Request Quote](#)



## Base transceiver station

A base transceiver station (BTS) or a baseband unit (BBU) is a piece of equipment that facilitates wireless communication between user equipment (UE) and a network. UEs are devices like mobile phones (handsets), WLL phones, computers with wireless Internet connectivity, or antennas mounted on buildings or telecommunication towers. The network can be that of any of the wireless communication technologies like GSM, CDMA, wireless local loop, Wi-Fi, WiMAX or other

[Request Quote](#)



## base transceiver station components

A Base Transceiver Station (BTS) is a fundamental component of a mobile cellular network, responsible for establishing a communication link ...

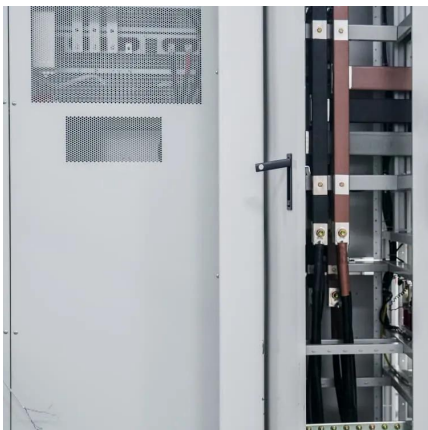


[Request Quote](#)

## 5G Base Station Architecture

Uncover the intricate world of 5G Base Station Architecture, from gNode B to NGAP signaling. Dive into flexible network deployment options.

[Request Quote](#)



## [The Base Station in Wireless Communications: The Key to ...](#)

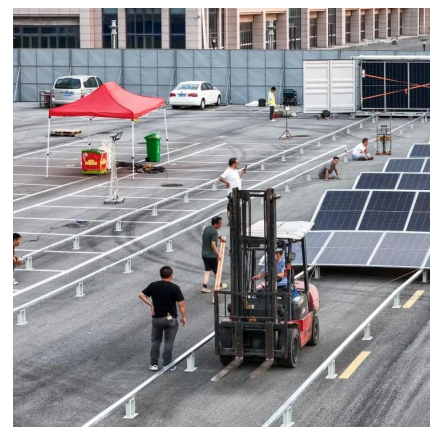
Equipped with an electromagnetic wave antenna, often placed on a tall mast, the base station enables communication between mobile terminals (such as mobile phones or ...

[Request Quote](#)

## [What is the Base Station Subsystem \(BSS\)?](#)

In summary, the Base Station Subsystem (BSS) in GSM is a critical component responsible for managing radio communication between mobile devices (MS) and the core ...

[Request Quote](#)





## [What Are Base Station Antennas? Complete Guide](#)

Base station antennas play a fundamental role in wireless communication systems by enabling the signal transmission and reception ...

[Request Quote](#)

## [Types and Applications of Mobile Communication ...](#)

Mobile communication base station is a form of radio station, which refers to a radio transceiver station that transmits information between mobile ...

[Request Quote](#)



## [Equipment for Your Ham Radio Station](#)

Essential Equipment for a Ham Radio Station  
Setting up a ham radio station requires a few essential pieces of equipment. In this section, we will discuss ...

[Request Quote](#)

## **Base Transceiver Stations (BTS)**

What is a Base Transceiver Station? A Base Transceiver Station, commonly known as BTS, is a critical piece of equipment in wireless communication networks.

[Request Quote](#)



### [Understanding the Basics: What is a Base ...](#)

In today's digitally connected world, understanding the technology that makes communication possible is more important than ever. One key ...

[Request Quote](#)

## **Ch. 3 911 Flashcards , Quizlet**

Mobile radios are typically housed inside responders' vehicles. The vehicles have mounted antennas and provide a power source. Mobile radios provide better coverage and are longer ...

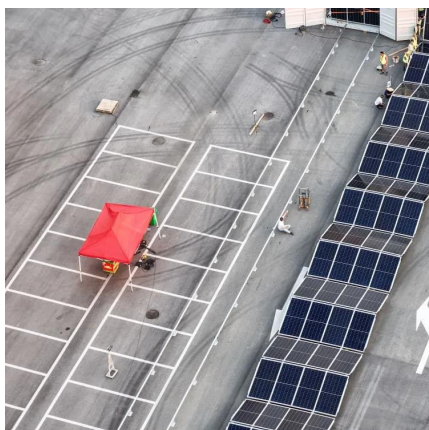
[Request Quote](#)



## **Base Stations**

The present-day tele-space is incomplete without the base stations as these constitute an important part of the modern-day scheme of wireless communications. They are ...

[Request Quote](#)







## What is Telecommunication Base Station , China Hop

Generally speaking, a base station consists of three antennas, each transmitting signals in a 120 degree direction towards the surrounding area, which together ...

[Request Quote](#)



## **Cell site**

A cell tower in Peristeri, Greece A cell site, cell phone tower, cell base tower, or cellular base station is a cellular -enabled mobile device site where antennas ...

[Request Quote](#)

## What is the function of the Base Transceiver Station ...

The Base Transceiver Station (BTS) is a critical component of the cellular network architecture, particularly in the GSM (Global System for ...

[Request Quote](#)



## **Base transceiver station**

Typically a BTS will have several transceivers (TRXs) which allow it to serve several different frequencies and different sectors of the cell (in the case of sectorised base stations).

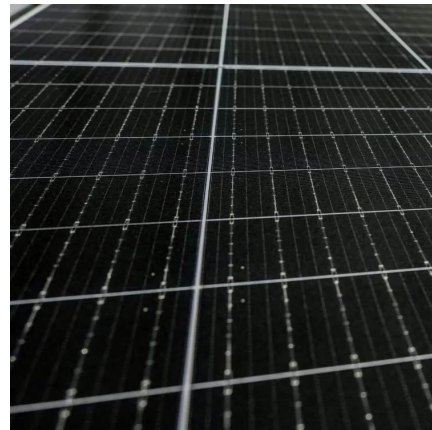
[Request Quote](#)



## The Base Station in Wireless Communications: The Key to ...

Base station, also known as BTS (Base Transceiver Station), is a key device in wireless communication systems such as GSM. Equipped with an electromagnetic wave ...

[Request Quote](#)



## **Base Stations**

The present-day tele-space is incomplete without the base stations as these constitute an important part of the modern-day scheme of wireless ...

[Request Quote](#)

## **What Is A Base Station?**

A base station is an integral component of wireless communication networks, serving as a central point that manages the transmission and ...

[Request Quote](#)





## 5g base station architecture

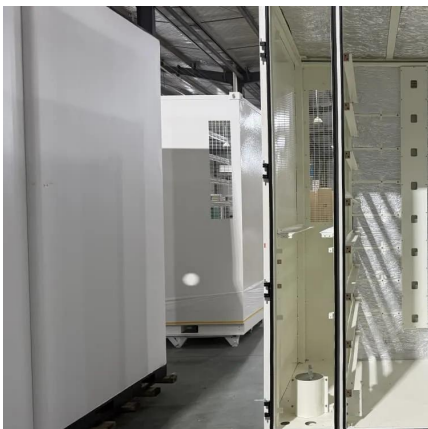
5G (fifth generation) base station architecture is designed to provide high-speed, low-latency, and massive connectivity to a wide range of devices. The architecture is more ...

[Request Quote](#)

## Base Transceiver Stations (BTS)

What is a Base Transceiver Station? A Base Transceiver Station, commonly known as BTS, is a critical piece of equipment in wireless communication ...

[Request Quote](#)



## What is a base station?

In telecommunications, a base station is a fixed transceiver that is the main communication point for one or more wireless mobile client devices.

[Request Quote](#)

## Base Stations and Energy Levels

Mobile communications work by using low power radio waves to carry speech and data. When data is transferred, the signal passes across a network of linked cell sites (hence ...

[Request Quote](#)



### [What Are Base Station Antennas? Complete Guide](#)

Base station antennas play a fundamental role in wireless communication systems by enabling the signal transmission and reception between the base stations and mobile devices.

[Request Quote](#)

## Contact Us

---

For catalog requests, pricing, or partnerships, please visit:  
<https://www.espaciovet.es>