

# **What does a communication base station generally look like**





## Overview

---

In the area of wireless computer networking, a base station is a radio receiver/transmitter that serves as the hub of the local wireless network, and may also be the gateway between a wired network and the wireless network. It typically consists of a low-power transmitter and .

What is a base station in a wireless network?

In the area of wireless computer networking, a base station is a radio receiver/transmitter that serves as the hub of the local wireless network, and may also be the gateway between a wired network and the wireless network. It typically consists of a low-power transmitter and wireless router.

What is a base station in telecommunications?

In telecommunications, a base station is a fixed transceiver that is the main communication point for one or more wireless mobile client devices. A base station serves as a central connection point for a wireless device to communicate.

What is the role of a base station in wireless communication?

Base stations are critical components in wireless communication networks, serving as the intermediary between mobile devices and the core network. They play a vital role in ensuring seamless connectivity, efficient data transmission, and reliable communication services.

Why are base stations important?

Base stations are the backbone of wireless communication networks, playing a pivotal role in signal transmission, network reliability, and high-speed data connectivity. As technology evolves, the importance of base stations will continue to grow, addressing new challenges and supporting the ever-expanding demand for wireless communication services.

How does a base station work?

It usually connects the device to other networks or devices through a



dedicated high bandwidth wire of fiber optic connection. Base stations typically have a transceiver, capable of sending and receiving wireless signals; Otherwise if they only send the trailer it will be considered a transmitter or broadcast point only.

How many types of base stations are there?

Macro cell, Micro cell, Pico cell and Femto cell are 4 types of base stations in wireless communication networks. Macrocell antennas must be properly mounted on ground-based masts, rooftops or other existing structures and at heights for an unhindered, clear view of the surroundings.



## What does a communication base station generally look like

---



### [Understanding BTS \(Base Transceiver Station\) in ...](#)

A Base Transceiver Station (BTS) is the equipment that facilitates wireless communication between user devices and the network. It houses the radio transceivers that define a cell and ...

[Request Quote](#)

### Base station

In the area of wireless computer networking, a base station is a radio receiver/transmitter that serves as the hub of the local wireless network, and may also be the gateway between a wired ...

[Request Quote](#)



### Base Stations

Base stations form a key part of modern wireless communication networks because they offer some crucial advantages, such as wide coverage, continuous communications and ...

[Request Quote](#)



### Base station

In telecommunications, a base station is a fixed transceiver that is the main communication point for one or more wireless mobile client devices. ...



[Request Quote](#)



### [Understanding the Basics of a Base Transceiver Station](#)

The base transceiver station, commonly referred to as the BTS, is a fundamental component in modern telecommunications networks. Understanding the basics of a base ...

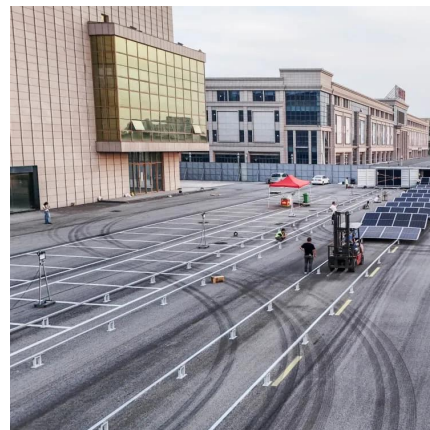
[Request Quote](#)



### [How do communication base stations work](#)

Communication base stations, or cell towers, are vital for wireless networks. They consist of antennas, transceivers, controllers, and power supplies to transmit and receive signals.

[Request Quote](#)



### [What is a Base Station in Telecommunications?](#)

What is a Base Station? A base station is a critical component in a telecommunications network. A fixed transceiver that acts as the central ...

[Request Quote](#)







## The Base Station in Wireless Communications: The ...

Equipped with an electromagnetic wave antenna, often placed on a tall mast, the base station enables communication between mobile terminals ...

[Request Quote](#)



## What Are Base Station Antennas? Complete Guide

This article will provide a thorough outlook on base station antennas from working principles, applications, installation and maintenance ...

[Request Quote](#)

### **Base station**

OverviewComputer networkingLand surveyingWireless communicationsSee also

In the area of wireless computer networking, a base station is a radio receiver/transmitter that serves as the hub of the local wireless network, and may also be the gateway between a wired network and the wireless network. It typically consists of a low-power transmitter and wireless router.

[Request Quote](#)



### **Base station**

In telecommunications, a base station is a fixed transceiver that is the main communication point for one or more wireless mobile client devices. A base station serves as ...

[Request Quote](#)



## Base Station Controller

A base station controller (BSC) plays a pivotal role in mobile telecommunications networks, serving as the intermediary between the mobile phones and the network's core ...

[Request Quote](#)



## [Chapter 5 Communication Questions Flashcards , Quizlet](#)

Study with Quizlet and memorize flashcards containing terms like An EMS base station a. generally uses a low output of between 50 and 75 watts of transmission power. b. should be ...

[Request Quote](#)

## 4 types of Base stations

Macro cell, Micro cell, Pico cell and Femto cell are 4 types of base stations in wireless communication networks. Macrocell antennas must be properly mounted on ground-based ...

[Request Quote](#)





## Base Station Controller

How does a BSC manage the communication between mobile devices and the network? The BSC manages communication by coordinating the activities of multiple base ...

[Request Quote](#)

## base transceiver station components

A Base Transceiver Station (BTS) is a fundamental component of a mobile cellular network, responsible for establishing a communication link ...

[Request Quote](#)



## [How a 5G cell tower works , Deutschland spricht über 5G](#)

Base stations, or mobile communications base stations, are stationary radio or mobile communications installations essentially consisting of two elements: (1) ...

[Request Quote](#)

## [5G Cell Towers: Why You See Them and How They ...](#)

5G introduces new cell towers. Here's more on how 5G small cells work, what they look like, and why they're located where they are.

[Request Quote](#)





## The Base Station in Wireless Communications: The Key to ...

Equipped with an electromagnetic wave antenna, often placed on a tall mast, the base station enables communication between mobile terminals (such as mobile phones or ...

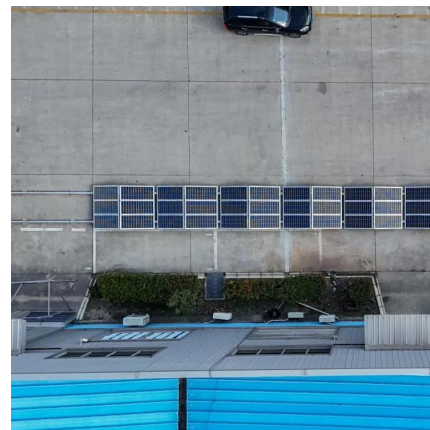
[Request Quote](#)



## How do communication base stations work

Introduction Communication base stations, also known as cell towers or mobile phone masts, are essential components of wireless communication networks. They allow mobile devices to ...

[Request Quote](#)



## **What Is A Base Station?**

A base station is an integral component of wireless communication networks, serving as a central point that manages the transmission and reception of signals between ...

[Request Quote](#)



## [What Are Base Station Antennas? Complete Guide](#)

This article will provide a thorough outlook on base station antennas from working principles, applications, installation and maintenance details and everything in between.

[Request Quote](#)



### **4 types of Base stations**

Macro cell, Micro cell, Pico cell and Femto cell are 4 types of base stations in wireless communication networks. Macrocell antennas must be properly ...

[Request Quote](#)

## **What Is the Role of a Base Station in Wireless Communication?**

Base stations are critical components in wireless communication networks, serving as the intermediary between mobile devices and the core network. They play a vital role in ...

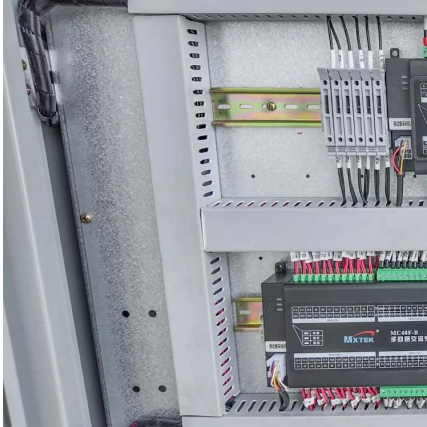
[Request Quote](#)



## [What is a base station and how are 4G/5G base ...](#)

Base station is a stationary trans-receiver that serves as the primary hub for connectivity of wireless device communication.

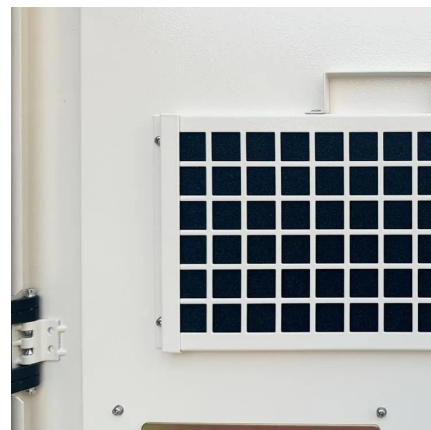
[Request Quote](#)



## Base Stations and Cell Towers: The Pillars of Mobile Connectivity

Base stations and cell towers are critical components of cellular communication systems, serving as the infrastructure that supports seamless mobile connectivity. These ...

[Request Quote](#)



## What is a base station?

A base station serves as a central connection point for a wireless device to communicate. It further connects the device to other networks or devices, usually through ...

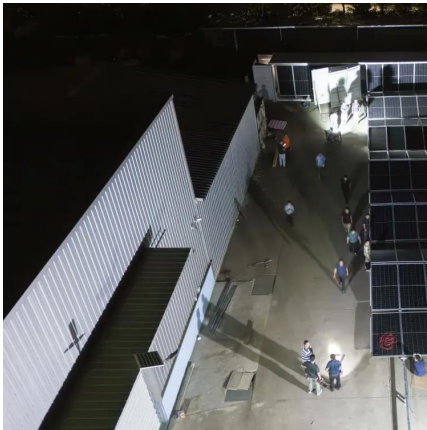
[Request Quote](#)

## What is the role of base station which is used in cellular mobile

A base station controller (BSC) is a network element that controls and monitors a number of base stations and provides the interface between the cell sites and the mobile ...

[Request Quote](#)





## **Non-Terrestrial Networks (NTNs) Employing HAPS or Artificial ...**

What is a non-terrestrial network (NTN)? A non-terrestrial network (NTN) is a type of wireless communication network used for applications such as mobile communications. The ...

[Request Quote](#)

## **Contact Us**

---

For catalog requests, pricing, or partnerships, please visit:  
<https://www.espaciovet.es>