

What does base station communication depend on





Overview

Equipped with an electromagnetic wave antenna, often placed on a tall mast, the base station enables communication between mobile terminals (such as mobile phones or pagers) and the fixed part of the digital telecommunications network. What is a base station in a telecommunications network?

A base station is a critical component in a telecommunications network. A fixed transceiver that acts as the central communication hub for one or more wireless mobile client devices. In the context of cellular networks, it facilitates wireless communication between mobile devices and the core network.

What does a base station do?

Base stations are responsible for transmitting and receiving data to and from wireless devices, as well as managing network resources and ensuring reliable and efficient communication. The basic function of a base station is to convert wireless signals into digital signals that can be transmitted over a wired network infrastructure.

How does a wireless device communicate with a base station?

When a wireless device, such as a mobile phone, communicates with a base station, the device sends a signal to the base station, which converts the signal into digital form and sends it to the network. Similarly, when the network sends data to the device, the base station converts the digital data into a wireless signal that the device can receive.

Why are base stations important in cellular communication?

Base stations are important in the cellular communication as it facilitate seamless communication between mobile devices and the network communication. The demand for efficient data transmission are increased as we are advancing towards new technologies such as 5G and other data intensive applications.

How does a base station communicate with a client device?



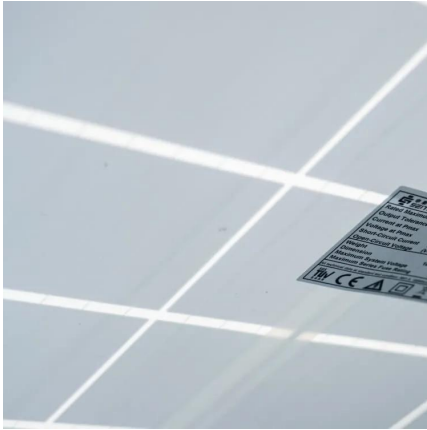
Generally, if client devices wanted to communicate to each other, they would communicate both directly with the base station and do so by routing all traffic through it for transmission to another device. Base stations in cellular telephone networks are more commonly referred to as cell towers.

Is a base station a transmitter or broadcast point?

Base stations are generally a transceiver, capable of sending and receiving wireless signals; otherwise, if they only transmitted signals out, they would be considered a transmitter or broadcast point. A base station will have one or more radio frequency (RF) antennas to transmit and receive RF signals to other devices.



What does base station communication depend on



[5+ Best Ham Base Stations To Boost Your Communication](#)

The best ham base station for a particular user will depend on their individual needs and preferences. Some factors to consider when choosing a ham base station include ...

[Request Quote](#)

What is a base station?

A base station serves as a central connection point for a wireless device to communicate. It further connects the device to other networks or devices, usually through ...

[Request Quote](#)



Earth Segment Subsystems

The earth segment of satellite communication system mainly consists of two earth stations. Those are transmitting earth station and receiving earth station.

[Request Quote](#)

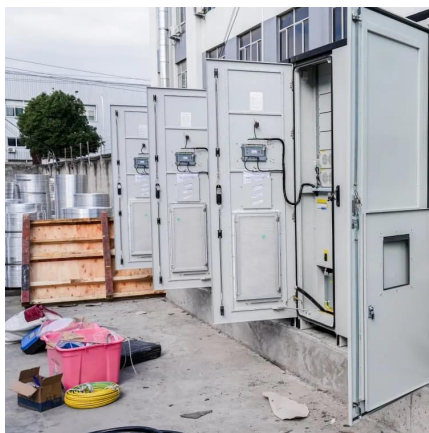
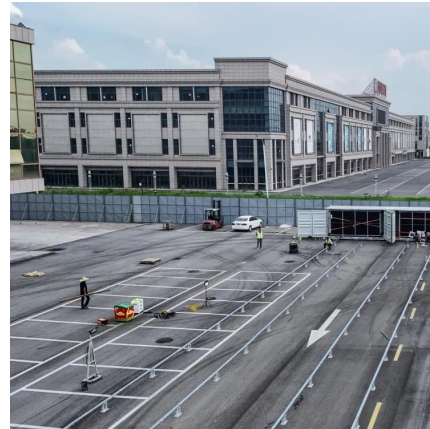
Base Stations

Base stations form a key part of modern wireless communication networks because they offer some crucial advantages, such as wide coverage,



continuous communications and ...

[Request Quote](#)



What Is A Base Station?

A base station is an integral component of wireless communication networks, serving as a central point that manages the transmission and reception of signals between ...

[Request Quote](#)

EMF

A base station is made up of antennas connected by cable to electronic (radio) equipment usually housed in a room or 'shelter'. Some base stations have ...

[Request Quote](#)



BS (Base Station)

Base stations are typically designed as a set of hardware and software components that work together to provide wireless communication services. The hardware components of ...

[Request Quote](#)



What is a Base Station?

The electromagnetic waves emitted by base stations and mobile phones are like air, filling us all around. Everyone knows mobile phones, ...

[Request Quote](#)



[The Common Misconceptions Around Base and ...](#)

Base Station Connection: Multiple Rovers One of the most common causes of confusion around a base and rover setup is around the ...

[Request Quote](#)

Base station

In the area of wireless computer networking, a base station is a radio receiver/transmitter that serves as the hub of the local wireless network, and may also be the gateway between a wired ...

[Request Quote](#)



[Why Choose Base Station for Reliable Communication , KSA](#)

Whether you're using your mobile phone for a call, relying on radio communication for a remote operation, or utilizing advanced communication systems for emergency response, ...

[Request Quote](#)



Base station

In the area of wireless computer networking, a base station is a radio receiver/transmitter that serves as the hub of the local wireless network, and ...

[Request Quote](#)



[The Base Station in Wireless Communications: The ...](#)

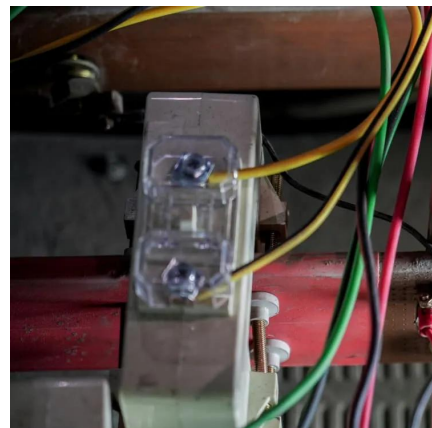
Equipped with an electromagnetic wave antenna, often placed on a tall mast, the base station enables communication between mobile terminals ...

[Request Quote](#)

What Is Base Station in Mobile Communication? - The Heart of ...

At the heart of this system lies the base station, a crucial component that enables seamless communication between mobile devices and the network. In this blog post, we will ...

[Request Quote](#)





Base Station

Importance A base station is a crucial aspect of communication infrastructure, playing a pivotal role in wireless and cellular communication. It acts as a central hub for the ...

[Request Quote](#)

Types of Base Stations

Base stations are one of the widely used components in the field of wireless communication and networks. It is an access point or base point of a particular area for ...

[Request Quote](#)



[The Base Station in Wireless Communications: The Key to ...](#)

Equipped with an electromagnetic wave antenna, often placed on a tall mast, the base station enables communication between mobile terminals (such as mobile phones or ...

[Request Quote](#)



[What is a Base Station in Telecommunications?](#)

Discover the role and functionality of a base station in telecommunications networks. Learn how these critical components manage communication between mobile devices and the network, ...

[Request Quote](#)



radio access network explained

Network Densification: To meet the growing demand for data, operators are deploying more base stations in densely populated areas, leading to better coverage and ...

[Request Quote](#)



What is Base Station?

Nowadays, networking has become a crucial part of our daily lives. To implement network services for users, base station plays an essential role to constitute a ...

[Request Quote](#)



What Is the Role of a Base Station in Wireless Communication?

Base stations are the backbone of wireless communication networks, playing a pivotal role in signal transmission, network reliability, and high-speed data connectivity.

[Request Quote](#)





Base Station's Role in Wireless Communication Networks

A base station is fundamental in wireless communication, because it facilitates the connection between your device and the wider network. Without base stations, mobile data and voice ...

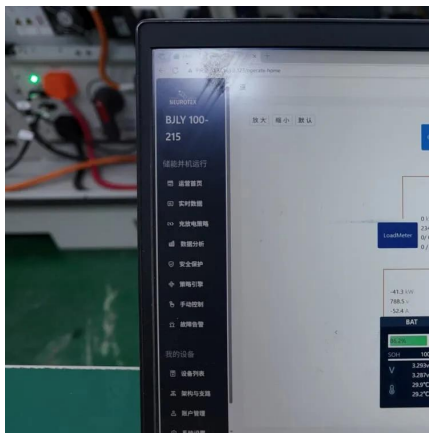
[Request Quote](#)



Basestation

A base station (BS) is defined as a fixed communication facility that manages radio resources for one or more base transceiver stations (BTSSs), facilitating radio channel setup, frequency ...

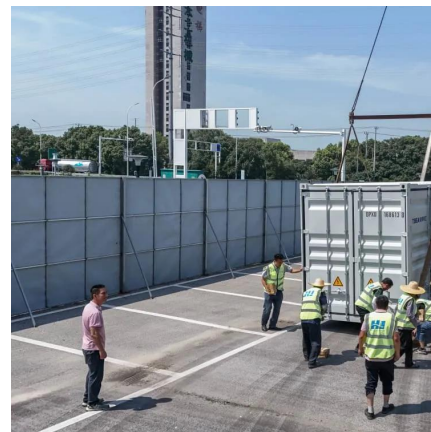
[Request Quote](#)



Do You Need A Base Station For Two-Way Radio ...

A base station, also known as a repeater, is a device used for communicating with or without hand-held radios, but most often with. A base ...

[Request Quote](#)



BS (Base Station)

Base stations are typically designed as a set of hardware and software components that work together to provide wireless communication ...

[Request Quote](#)



Types and Applications of Mobile Communication ...

Mobile communication base station is a form of radio station, which refers to a radio transceiver station that transmits information between mobile ...

[Request Quote](#)



What is a Base Station in Telecommunications?

Discover the role and functionality of a base station in telecommunications networks. Learn how these critical components manage communication ...

[Request Quote](#)

What Does a Base Station Do and Why Is It Essential for ...

A base station is a fixed point of communication between mobile devices and the wider telecom network. It transmits and receives radio signals, enabling your phone to access ...

[Request Quote](#)





Contact Us

For catalog requests, pricing, or partnerships, please visit:
<https://www.espaciovet.es>