

What is the base station communication equipment like





Overview

A base transceiver station (BTS) or a baseband unit (BBU) is a piece of equipment that facilitates between (UE) and a network. UEs are devices like (handsets), phones, computers with connectivity, or antennas mounted on buildings or telecommunication towers. The network can be that of any of the wireless communication technologies like , , , or other

What is a base station in telecommunications?

In telecommunications, a base station is a fixed transceiver that is the main communication point for one or more wireless mobile client devices. A base station serves as a central connection point for a wireless device to communicate.

What is a base transceiver station?

One key component in mobile networks is the Base Transceiver Station, often abbreviated as BTS. But what is base transceiver station, and why is it so crucial to the functioning of our mobile phones?

At its core, a BTS is the equipment that facilitates wireless communication between the mobile network and your phone.

What does a base station do?

Within this cell, the BTS handles all communications with mobile devices, facilitating voice calls, text messages, and data services. The base station itself consists of antennas, transceivers, a baseband unit (BBU) that handles the digital processing of radio signals, and other hardware that process the signals.

Why are base stations important for modern telecommunications?

In summary, base stations are critical for modern telecommunications as they serve as the link between mobile devices and the extensive network infrastructure that spans the globe. The strategic deployment and ongoing improvement of these stations are essential for maintaining global connectivity.



How does a base station communicate with a client device?

Generally, if client devices wanted to communicate to each other, they would communicate both directly with the base station and do so by routing all traffic through it for transmission to another device. Base stations in cellular telephone networks are more commonly referred to as cell towers.

Is a base station a transmitter or broadcast point?

Base stations are generally a transceiver, capable of sending and receiving wireless signals; otherwise, if they only transmitted signals out, they would be considered a transmitter or broadcast point. A base station will have one or more radio frequency (RF) antennas to transmit and receive RF signals to other devices.



What is the base station communication equipment like



[Base Station's Role in Wireless Communication Networks](#)

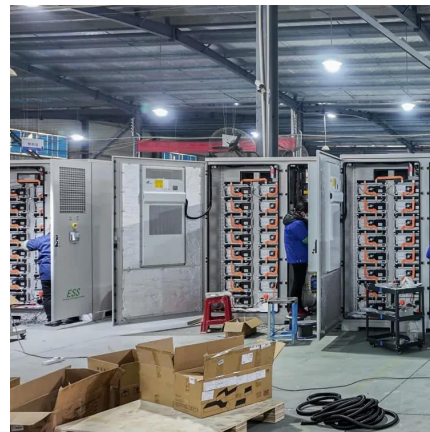
Base stations come in various types, including macro, micro, pico, and femto cells. Macro base stations cover large areas and support many users, commonly found in urban and rural ...

[Request Quote](#)

[Understanding the Basics: What is a Base ...](#)

In today's digitally connected world, understanding the technology that makes communication possible is more important than ever. One key ...

[Request Quote](#)



What Is the Role of a Base Station in Wireless Communication?

Base stations are critical components in wireless communication networks, serving as the intermediary between mobile devices and the core network. They play a vital role in ...

[Request Quote](#)



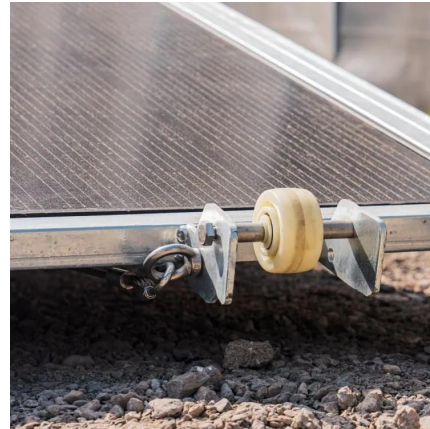
[The Base Station in Wireless Communications: The ...](#)

Equipped with an electromagnetic wave antenna, often placed on a tall mast, the base station



enables communication between mobile terminals ...

[Request Quote](#)



Base Stations

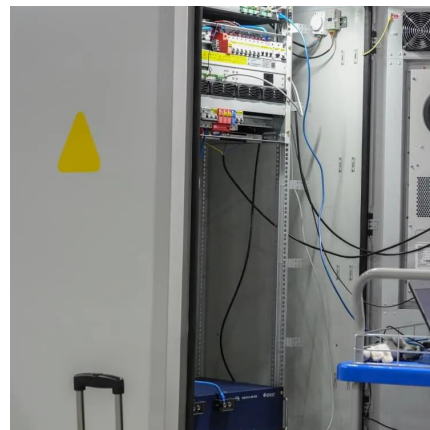
The present-day tele-space is incomplete without the base stations as these constitute an important part of the modern-day scheme of wireless communications. They are ...

[Request Quote](#)

[What Are Base Station Antennas? Complete Guide](#)

In modern telecommunications systems, the base station antenna stands out as an undeniable and crucial component to facilitate our daily communication from voice calls to ...

[Request Quote](#)



What Is A Base Station?

A base station is a piece of equipment that facilitates wireless communication between devices and a network. It contains the necessary hardware and software to transmit ...

[Request Quote](#)



What is Base Station?

Nowadays, networking has become a crucial part of our daily lives. To implement network services for users, base station plays an essential role to constitute a ...

[Request Quote](#)



Base transceiver station

Though the term BTS can be applicable to any of the wireless communication standards, it is generally associated with mobile communication technologies like GSM and CDMA. In this ...

[Request Quote](#)

Satellite Ground Station Basics

Explore the fundamentals of satellite ground stations, including their architecture, receiving and transmitting processes, and key specifications.

[Request Quote](#)



[Ham radio base station: Best choices to start with](#)

14.1 Can I use a ham radio base station for emergency communication? 14.2 Can I connect my ham radio base station to a ...

[Request Quote](#)



Base Transceiver Stations (BTS)

A Base Transceiver Station, commonly known as BTS, is a critical piece of equipment in wireless communication networks. It serves as the primary point of contact between user devices, such ...

[Request Quote](#)



[Understanding the Basics: What is a Base ...](#)

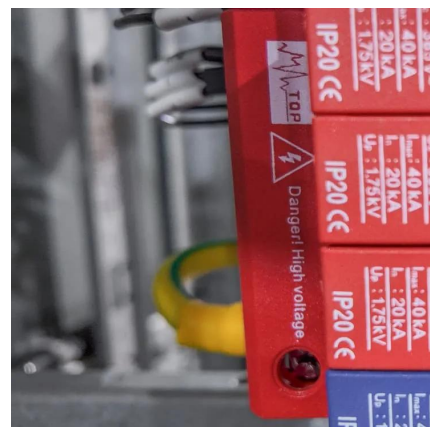
Discover the essentials of a Base Transceiver Station (BTS). Learn how BTS functions, its key components, and its role in mobile ...

[Request Quote](#)

[What is the function of the Base Transceiver Station ...](#)

The Base Transceiver Station (BTS) is a critical component of the cellular network architecture, particularly in the GSM (Global System for ...

[Request Quote](#)





[The Base Station in Wireless Communications: The Key to ...](#)

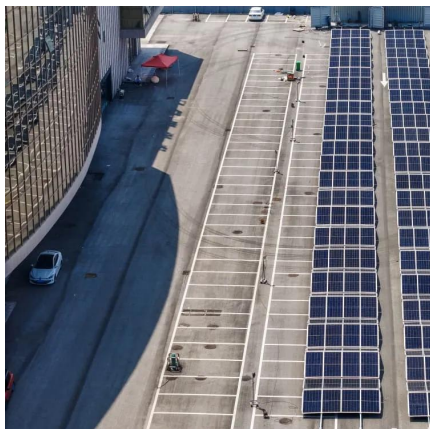
Equipped with an electromagnetic wave antenna, often placed on a tall mast, the base station enables communication between mobile terminals (such as mobile phones or ...

[Request Quote](#)

Understanding the Basics: What is a Base Transceiver Station?

Discover the essentials of a Base Transceiver Station (BTS). Learn how BTS functions, its key components, and its role in mobile communication networks. Read more on ...

[Request Quote](#)



What is a base station?

In telecommunications, a base station is a fixed transceiver that is the main communication point for one or more wireless mobile client devices. A base station serves as ...

[Request Quote](#)

[IoT Glossary: Base Station Controller Explained](#)

The base station is responsible for maintaining communication between the network and the users, and also among users. The equipment works with a mobile switching ...

[Request Quote](#)



[Radio Base Stations for Secure Communication](#)

In the world of radio communications, a radio base station plays a vital role in ensuring reliable and seamless communication across a wide area. Whether used in mobile networks, ...

[Request Quote](#)



Base transceiver station

A base transceiver station (BTS) or a baseband unit (BBU) is a piece of equipment that facilitates wireless communication between user equipment (UE) and a network. UEs are devices like mobile phones (handsets), WLL phones, computers with wireless Internet connectivity, or antennas mounted on buildings or telecommunication towers. The network can be that of any of the wireless communication technologies like GSM, CDMA, wireless local loop, Wi-Fi, WiMAX or other

[Request Quote](#)



[Introduction of base station and Remote Radio Unit](#)

Base Station, generally refers to the public mobile communication base station, the base station is used to provide signals to mobile phones. It ...



[Request Quote](#)

[Base Transceiver Station: Core Functionality Explained](#)

Discover what a Base Transceiver Station is and how it's pivotal in mobile communication networks. Unlock the essentials of BTS functionality here.

[Request Quote](#)



[What Are Base Station Antennas? Complete Guide](#)

In modern telecommunications systems, the base station antenna stands out as an undeniable and crucial component to facilitate our daily ...

[Request Quote](#)

base station in 5g

A 5G base station, also known as a gNodeB (gNB), is a critical component of a 5G network infrastructure. It plays a central role in enabling ...

[Request Quote](#)





Best Ham Radio Base Station Kits for Effective Communication

Explore the best ham radio base station kits for effective communication. Find top-rated options to enhance your amateur radio experience and connectivity.

[Request Quote](#)

RBS (radio base station)

A Radio Base Station (RBS), also known as a base transceiver station (BTS), is a key component of a cellular network infrastructure. It serves ...

[Request Quote](#)



Contact Us

For catalog requests, pricing, or partnerships, please visit:
<https://www.espaciovet.es>