

What is the electricity fee for a communication base station





Overview

How to estimate the cost of building and operating a cellular network?

A simple method for estimating the costs of building and operating a cellular mobile network is proposed. Using the empirical data from a third generation mobile system (WCDMA), it is shown that the cost is driven by different factors depending on the characteristics of the base stations deployed.

Does a cellular base station emit RF energy?

The tower itself doesn't emit any RF energy; in fact the area directly surrounding a cellular base station is exposed to less RF energy than areas further out, as the antenna radiates in a fan or wedge shape outward from the source.

Why are base stations important in cellular communication?

Base stations are important in the cellular communication as it facilitate seamless communication between mobile devices and the network communication. The demand for efficient data transmission are increased as we are advancing towards new technologies such as 5G and other data intensive applications.

What is a base station?

What is Base Station?

A base station represents an access point for a wireless device to communicate within its coverage area. It usually connects the device to other networks or devices through a dedicated high bandwidth wire of fiber optic connection. Base stations typically have a transceiver, capable of sending and receiving wireless signals;.

What are the components of a base station?

Power Supply: The power source provides the electrical energy to base station



elements. It often features auxiliary power supply mechanisms that guarantee operation in case of lost or interrupted electricity, during blackouts. Baseband Processor: The baseband processor is responsible for the processing of the digital signals.

What are the properties of a base station?

Here are some essential properties: Capacity: Capacity of a base station is its capability to handle a given number of simultaneous connections or users.

Coverage Area: The coverage area is a base station is that geographical area within which mobile devices can maintain a stable connection with the base station.



What is the electricity fee for a communication base station



[The Central Role of Base Stations in Two-Way Radio ...](#)

What is a Base Station in Two-Way Radio Communication? A base station in the context of two-way radio communication refers to a fixed, central hub that ...

[Request Quote](#)

[Base station performance and costs , Download Table ...](#)

Using the empirical data from a third generation mobile system (WCDMA), it is shown that the cost is driven by different factors depending on the ...

[Request Quote](#)



Recommended 5 GMRS Base Stations

Choose the best GMRS base station for your communication needs using my comprehensive guide with top recommendations and ...

[Request Quote](#)



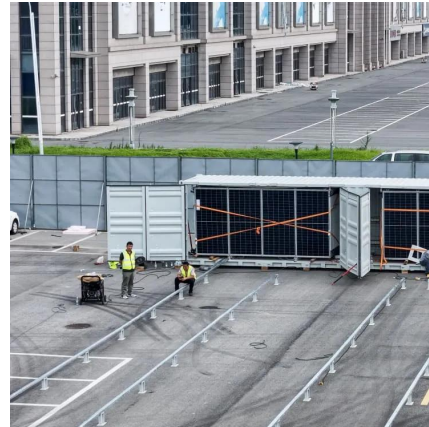
[How to get a Permit to Purchase/Possess Radio ...](#)

The NTC is the governing body when it comes to Radio usage. They regulate the installation,



operation, and maintenance of radio stations for ...

[Request Quote](#)



[DALY base station energy storage BMS solution for ...](#)

Provide comprehensive BMS (battery management system) solutions for communication base station scenarios around the world to help ...

[Request Quote](#)



[What You Should Know About High Power Base Stations](#)

High Power Mobile Base Stations are advanced wireless communication systems designed to handle the rugged demands of ...

[Request Quote](#)



LoRaWAN Base Station: Your Ultimate Guide to Long-Range IoT ...

LoRaWAN Base Stations enable long-range, low-power communication for diverse IoT applications. They offer scalability and flexibility for various deployment scenarios, contributing ...

[Request Quote](#)



Key Factors Affecting Power Consumption in Telecom Base Stations

Discover the key factors influencing power consumption in telecom base stations. Optimize energy efficiency and reduce operational costs with our expert insights.

[Request Quote](#)



[Base Fee charge for electricity in Texas](#)

Many retail electric providers (REPs) add a base fee charge for electricity (base charge) as part of their service cost. So, what does base charge mean? What is a base charge ...

[Request Quote](#)

[Understanding Base Transceiver Stations: The Backbone of ...](#)

Introduction to Base Transceiver Stations Base Transceiver Stations (BTS) form the backbone of mobile networks. They are integral in ensuring seamless connectivity and ...

[Request Quote](#)



CELL TOWER LEASE RATES 2024

Cell Tower Developer Lease (Usually a Ground Lease) Is the proposed cell tower lease being offered by a cell tower development or tower management ...

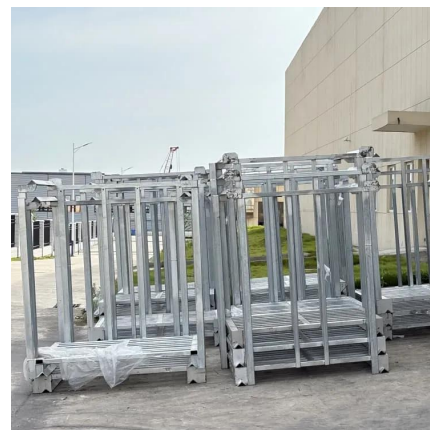
[Request Quote](#)



[\[NTC MEMORANDUM CIRCULAR NO. 19-12-2000, December ...](#)

2. Effective radiated power refers to the product of the power supplied to the antenna and its gain relative to a half-wave dipole, less antenna transmission loss. 3. Broadcasting stations shall ...

[Request Quote](#)



[Base station performance and costs . Download Table](#)

Using the empirical data from a third generation mobile system (WCDMA), it is shown that the cost is driven by different factors depending on the characteristics of the base stations deployed.

[Request Quote](#)

[Key Factors Affecting Power Consumption in Telecom ...](#)

Discover the key factors influencing power consumption in telecom base stations. Optimize energy efficiency and reduce operational costs with ...

[Request Quote](#)





[How much does a 5G base station cost?](#)

The supporting equipment including power supply, batteries, monitoring, air conditioning, cabinets, etc. will cost at least 30,000 to 50,000 yuan. Adding up all these various ...

[Request Quote](#)

Base Stations

The present-day tele-space is incomplete without the base stations as these constitute an important part of the modern-day scheme of wireless ...

[Request Quote](#)



Base Stations and Energy Levels

The tower itself doesn't emit any RF energy; in fact, the area directly surrounding a cellular base station is exposed to less RF energy than ...

[Request Quote](#)

[What You Should Know About High Power Base Stations](#)

High Power Mobile Base Stations are advanced wireless communication systems designed to handle the rugged demands of construction sites. Offering robust signals, ...

[Request Quote](#)



What is a Base Station?

The power of this 5G base station is very small, only 10 watts, which is not as powerful as a light bulb, let alone those household appliances. Without power, there is virtually ...

[Request Quote](#)



[Communication Base Station Energy Solutions](#)

Energy storage systems allow base stations to store energy during periods of low demand and release it during high-demand periods. This helps reduce power ...

[Request Quote](#)



Base stations and networks

Base stations enable mobile communications. Mobile phones and other mobile devices require a network of base stations in order to function. The base station antennas transmit and receive ...

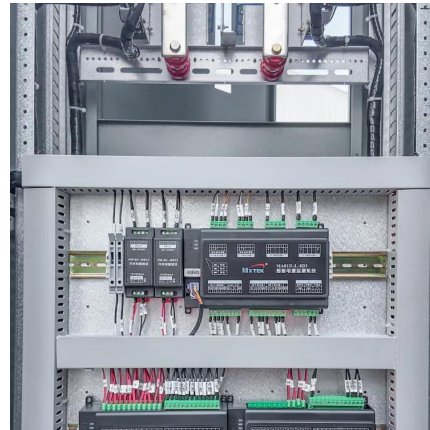
[Request Quote](#)



What is a Base Station?

The power of this 5G base station is very small, only 10 watts, which is not as powerful as a light bulb, let alone those household appliances. ...

[Request Quote](#)



Spectrum Management Handbook

The private land mobile network is to provide two-way communications between a fixed control point (i.e. base station) and a number of mobile transceiver units (e.g. vehicular or hand-held ...

[Request Quote](#)

What is the cost of building and maintaining a communication ...

In conclusion, building and maintaining a communication base station involves significant initial setup costs and ongoing maintenance expenses. These costs can vary widely depending on ...

[Request Quote](#)



Base Stations and Energy Levels

The tower itself doesn't emit any RF energy; in fact, the area directly surrounding a cellular base station is exposed to less RF energy than areas further out, as the antenna ...

[Request Quote](#)



[Communication base station solar power generation project](#)

What are the advantages of solar communication base station? Solar communication base station is based on PV power generation technology to power the communication base station,has ...

[Request Quote](#)



Base Stations

The present-day tele-space is incomplete without the base stations as these constitute an important part of the modern-day scheme of wireless communications. They are ...

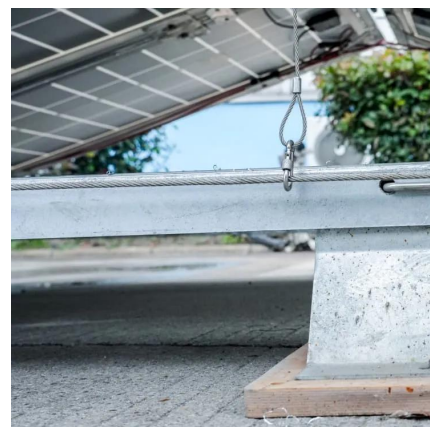
[Request Quote](#)



Communication Base Station Power Consumption & Electricity ...

Calculate the energy consumption and running costs of your Communication Base Station efficiently with our tool. Discover how your 50-watt Communication Base Station impacts your ...

[Request Quote](#)





[Do You Need A Base Station For Two-Way Radio ...](#)

A base station, also known as a repeater, is a device used for communicating with or without hand-held radios, but most often with. A base ...

[Request Quote](#)

What is the cost of building and maintaining a communication base station

In conclusion, building and maintaining a communication base station involves significant initial setup costs and ongoing maintenance expenses. These costs can vary widely depending on ...

[Request Quote](#)



[Communication Base Station Energy Solutions](#)

Energy storage systems allow base stations to store energy during periods of low demand and release it during high-demand periods. This helps reduce power consumption and optimize costs.

[Request Quote](#)

Basestation

A base station (BS) is defined as a fixed communication facility that manages radio resources for one or more base transceiver stations (BTSs), facilitating radio channel setup, frequency ...

[Request Quote](#)



Contact Us

For catalog requests, pricing, or partnerships, please visit:
<https://www.espaciovet.es>