

What is the maximum power of the flow battery in a communication base station





Overview

Why do cellular base stations have backup batteries?

Abstract: Cellular base stations (BSs) are equipped with backup batteries to obtain the uninterruptible power supply (UPS) and maintain the power supply reliability. While maintaining the reliability, the backup batteries of 5G BSs have some spare capacity over time due to the traffic-sensitive characteristic of 5G BS electricity load.

Which battery is best for telecom base station backup power?

Among various battery technologies, Lithium Iron Phosphate (LiFePO₄) batteries stand out as the ideal choice for telecom base station backup power due to their high safety, long lifespan, and excellent thermal stability.

What is a flow battery?

One such option is the flow battery. These batteries excel in energy storage, making them ideal for larger installations that require consistent power over extended periods. Another alternative is the sodium-sulfur (NaS) battery.

What makes a telecom battery pack compatible with a base station?

Compatibility and Installation Voltage Compatibility: 48V is the standard voltage for telecom base stations, so the battery pack's output voltage must align with base station equipment requirements. Modular Design: A modular structure simplifies installation, maintenance, and scalability.

How much power does a cellular base station use?

This problem exists particularly among the mobile telephony towers in rural areas, that lack quality grid power supply. A cellular base station can use anywhere from 1 to 5 kW power per hour depending upon the number of transceivers attached to the base station, the age of cell towers, and energy needed for air conditioning.

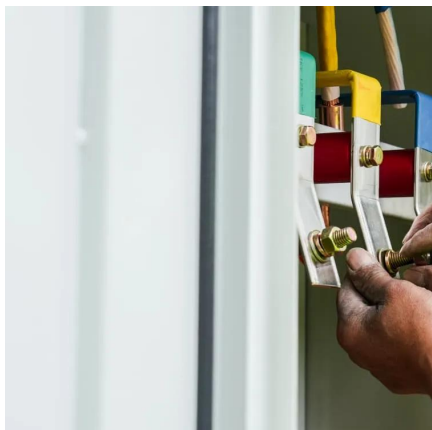


How is the schedulable capacity of a standby battery determined?

In this article, the schedulable capacity of the battery at each time is determined according to the dynamic communication flow, and the scheduling strategy of the standby power considering the dynamic change of communication flow is proposed. In addition, the model of a base station standby battery responding grid scheduling is established.



What is the maximum power of the flow battery in a communication



[Understanding Backup Battery Requirements for ...](#)

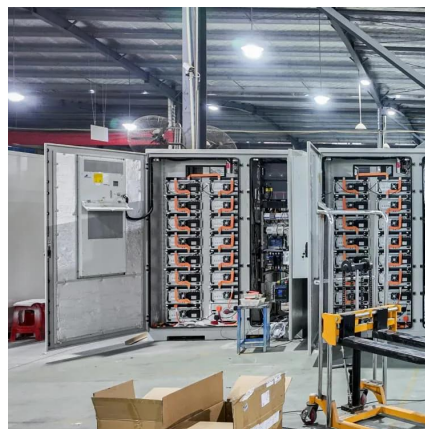
Telecom base stations require reliable backup power to ensure uninterrupted communication services. Selecting the right backup battery is ...

[Request Quote](#)

Power Base Station

Maximum base station power is limited to 38 dBm output power for Medium-Range base stations, 24 dBm output power for Local Area base stations, and to 20 dBm for Home base stations.

[Request Quote](#)



Distribution network restoration supply method considers 5G base

In view of the impact of changes in communication volume on the emergency power supply output of base station energy storage in distribution network fault areas, this ...

[Request Quote](#)

What is a base station?

What is a base station? In telecommunications, a base station is a fixed transceiver that is the main communication point for one or more ...



[Request Quote](#)



Telecom Base Station Backup Power Solution: Design Guide for ...

Discover the 48V 100Ah LiFePO4 battery pack for telecom base stations: safe, long-lasting, and eco-friendly. Optimize reliability with our design guide.

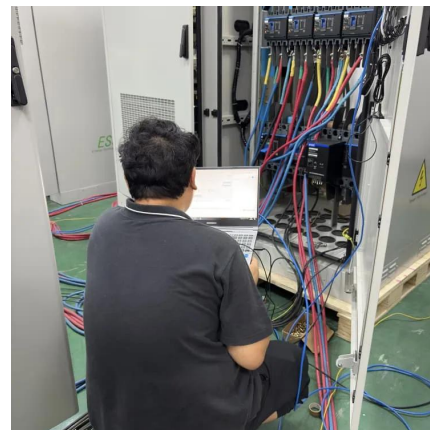
[Request Quote](#)



Multi-objective cooperative optimization of communication base station

Recently, 5G communication base stations have steadily evolved into a key developing load in the distribution network. During the operation process, scientific dispatching ...

[Request Quote](#)



Base station operation guidelines

Base station operation guidelines This topic introduces the concept of base station operation, provides information to help you identify good setup locations, describes best practices for ...

[Request Quote](#)





(PDF) Dispatching strategy of base station backup power supply

In this article, the schedulable capacity of the battery at each time is determined according to the dynamic communication flow, and the scheduling strategy of the standby ...

[Request Quote](#)



[Battery technology for communication base stations](#)

In the communication power supply field, base station interruptions may occur due to sudden natural disasters or unstable power supplies. This work studies the optimization of battery ...

[Request Quote](#)



What is a base station energy storage power station , NenPower

A base station energy storage power station refers to a facility designed to store energy generated from various renewable sources and supply it efficiently to power base ...

[Request Quote](#)



Evaluating the Dispatchable Capacity of Base Station Backup Batteries

Evaluating the Dispatchable Capacity of Base Station Backup Batteries in Distribution Networks
Published in: IEEE Transactions on Smart Grid (Volume: 12, Issue: 5, September 2021)

[Request Quote](#)



Basic components of a 5G base station

In this article, the schedulable capacity of the battery at each time is determined according to the dynamic communication flow, and the scheduling strategy of the standby power considering

[Request Quote](#)



Base Station Energy Storage

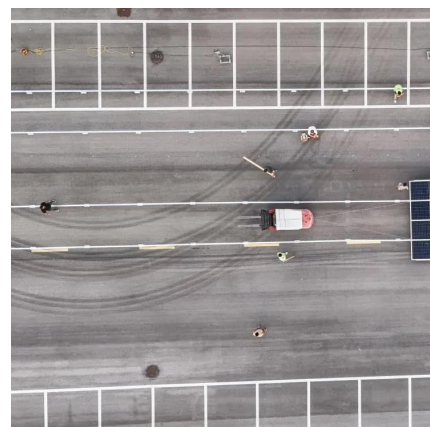
Base station energy storage refers to the use of battery-based technology--often integrated with renewable sources--to ensure continuous, reliable power to ...

[Request Quote](#)

What is the Base Station Subsystem (BSS)?

The Base Station Subsystem (BSS) is a crucial component of the GSM architecture in mobile communication (Global System for Mobile Communications) architecture ...

[Request Quote](#)





Measurements and Modelling of Base Station Power Consumption under Real

Abstract Base stations represent the main contributor to the energy consumption of a mobile cellular network. Since traffic load in mobile networks significantly varies during a working or ...

[Request Quote](#)

[Coordinated scheduling of 5G base station energy ...](#)

Auxiliary equipment includes power supply equipment, monitoring and lighting equipment. The power supply equipment manages the distribution ...

[Request Quote](#)



Communication base station

The tower energy storage battery can provide a rapid response to ensure the power supply of the base station, especially at the critical moment after the disaster, to ensure the smooth flow of ...

[Request Quote](#)

[Basic components of a 5G base station](#)

In this article, the schedulable capacity of the battery at each time is determined according to the dynamic communication flow, and the scheduling strategy of ...

[Request Quote](#)



Types of Batteries Used in Telecom Systems: A Guide

One such option is the flow battery. These batteries excel in energy storage, making them ideal for larger installations that require consistent power over extended periods.

[Request Quote](#)



Telecom Base Station Backup Power Solution: Design ...

Discover the 48V 100Ah LiFePO4 battery pack for telecom base stations: safe, long-lasting, and eco-friendly. Optimize reliability with our ...

[Request Quote](#)



Types of Batteries Used in Telecom Systems: A Guide ...

One such option is the flow battery. These batteries excel in energy storage, making them ideal for larger installations that require consistent ...

[Request Quote](#)





Evaluating the Dispatchable Capacity of Base Station Backup ...

Evaluating the Dispatchable Capacity of Base Station Backup Batteries in Distribution Networks
Published in: IEEE Transactions on Smart Grid (Volume: 12, Issue: 5, September 2021)

[Request Quote](#)



Base Station's Role in Wireless Communication Networks

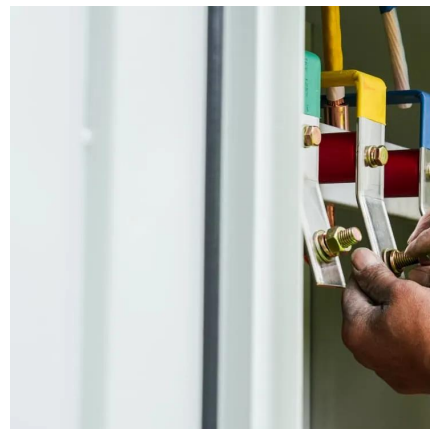
What is a base station? A base station is a critical component of wireless communication networks. It serves as the central point of a network that connects various devices, such as ...

[Request Quote](#)

Understanding Backup Battery Requirements for Telecom Base ...

Telecom base stations require reliable backup power to ensure uninterrupted communication services. Selecting the right backup battery is crucial for network stability and ...

[Request Quote](#)



Power supply and energy storage scheme for 20kw125kwh communication

The power of photovoltaic and wind power cannot be accurately predicted, and the power of base station communication equipment cannot be completely matched. When the power of ...

[Request Quote](#)



[Base Stations and Cell Towers: The Pillars of Mobile ...](#)

Base stations and cell towers are critical components of cellular communication systems, serving as the infrastructure that supports seamless ...

[Request Quote](#)



[Use of Batteries in the Telecommunications Industry](#)

Large telecom offices and cell sites with dedicated generators have 3 to 4 hours of battery reserve time A large telecom office may have over 400 cells and 8000 gallons of electrolyte

[Request Quote](#)

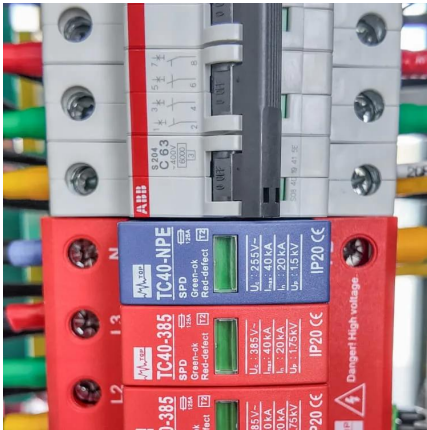


[Battery storage power station - a comprehensive guide](#)

A battery storage power station, also known as an energy storage power station, is a facility that stores electrical energy in batteries for later use. It plays a vital ...

[Request Quote](#)





Communication base station

The tower energy storage battery can provide a rapid response to ensure the power supply of the base station, especially at the critical moment after the ...

[Request Quote](#)

Contact Us

For catalog requests, pricing, or partnerships, please visit:
<https://www.espaciovet.es>