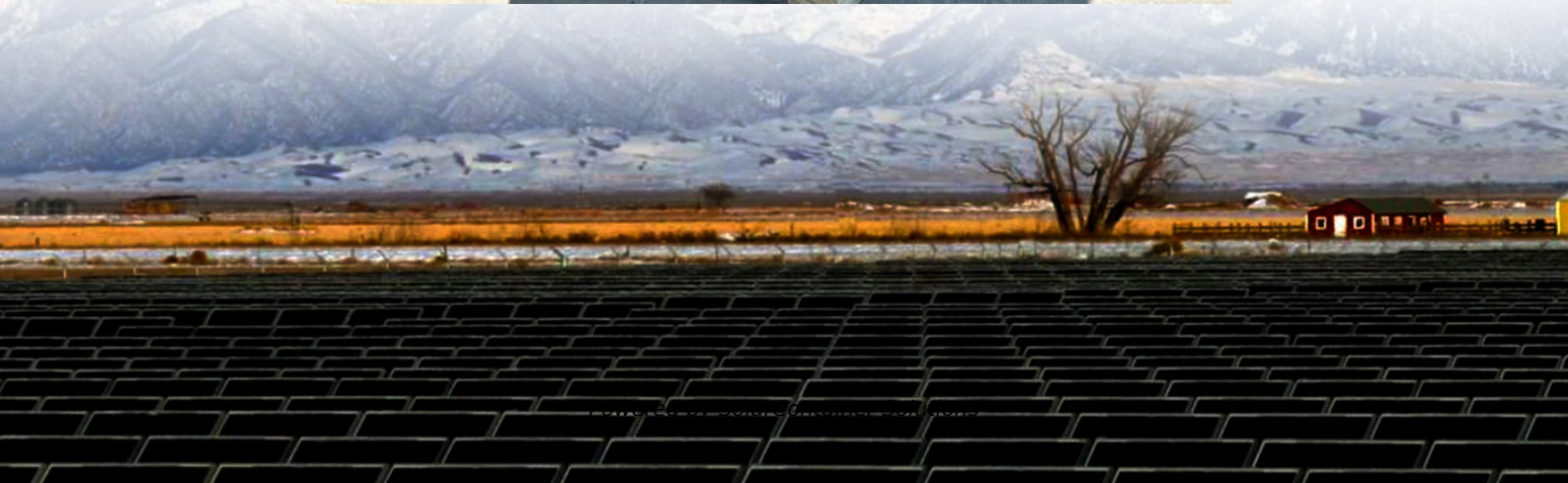


What is the minimum discharge voltage of a 14 6v lithium battery pack





Overview

How do I choose a lithium-ion battery pack?

When selecting a lithium-ion battery pack, understanding its voltage characteristics is crucial for ensuring optimal performance and longevity. Three key voltage terms define a battery's operation: Nominal Voltage, Charged Voltage, and Cut-Off Voltage.

How much voltage does a lithium ion battery need?

Voltage plays a crucial role in determining the capacity and output of a lithium-ion battery. The nominal voltage typically ranges from 3.6 to 3.7 volts per cell, but it's important to note that discharging a lithium-ion battery below its minimum voltage can cause irreversible damage.

What is a safe voltage for a lithium ion battery?

Lithium-ion batteries function within a certain range at which their voltage operates optimally and safely. The highest range where the fully charged voltage of a lithium-ion battery is approximately 4.2V per cell. The lowest range which is the minimum safe voltage for lithium-ion batteries is approximately 3.0V per cell.

Can a 12 volt battery be charged at 14.6 volt?

Trying to do this at 14.6V on a 12volt battery is more than likely to result in charging termination by the bms for one or more cell over-volt. Those cells simply reached full charge and their voltage shoots up. LFP has such a flat charge-discharge voltage that it isn't a good gauge of state of charge (SOC).

How many volts is a lithium polymer battery?

Single lithium polymer (Li-Po) cells typically have a nominal voltage of 3.7 volts. When the voltage of this type of cell is charged to 4.2 volts, it is considered fully charged. During the battery discharge process, when the voltage drops to 3.27 volts, the battery is considered fully discharged.



What is the nominal voltage of a battery pack?

This value is commonly used to specify battery packs and serves as a general reference for comparing different battery chemistries. For a 3S Li-ion battery pack (three cells in series), the nominal voltage would be 10.8V ($3.6V \times 3$). 2. Charged Voltage: The Maximum Voltage When Fully Charged What Is Charged Voltage?



What is the minimum discharge voltage of a 14 6v lithium battery pack



Lithium Ion Battery Voltage Explained: Everything You Need to ...

The lowest range which is the minimum safe voltage for lithium-ion batteries is approximately 3.0V per cell. Staying within this range is quite critical because exceeding this ...

[Request Quote](#)

[Ultimate Guide to Battery Voltage Chart](#)

Charging to 14.6V indicates that the battery pack is fully charged, with each cell reaching 3.65V at this point. Discharging to 10V means that the battery pack has been fully ...

[Request Quote](#)



[Lithium Ion Battery Voltage Explained: Everything You ...](#)

The lowest range which is the minimum safe voltage for lithium-ion batteries is approximately 3.0V per cell. Staying within this range is quite ...

[Request Quote](#)

[Ultimate Guide to Battery Voltage Chart](#)

12V LiFePO4 Battery Pack Voltage Curve A 12V LiFePO4 battery pack is typically composed of four 3.2V cells connected in series, with a total ...



[Request Quote](#)



[What is the minimum voltage for a lithium-ion battery?](#)

The nominal voltage typically ranges from 3.6 to 3.7 volts per cell, but it's important to note that discharging a lithium-ion battery below its minimum voltage can cause irreversible ...

[Request Quote](#)



Lithium Ion Battery Voltage Chart

Use the chart of battery voltages chart below to determine the discharge chart for each battery. As you can see the voltages are significantly different across the ...

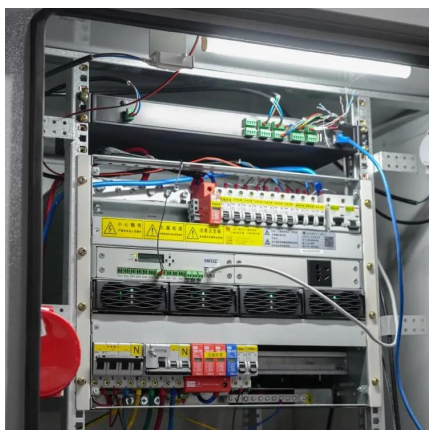
[Request Quote](#)



Lithium Ion Battery Voltage Chart

Use the chart of battery voltages chart below to determine the discharge chart for each battery. As you can see the voltages are significantly different across the different types of batteries. All ...

[Request Quote](#)





[Li-Ion Cells: Charging and Discharging Explained](#)

The discharge voltage is the voltage level at which the cell operates while providing power. For li-ion cells, the typical voltage range ...

[Request Quote](#)



[Ultimate Guide to Battery Voltage Chart](#)

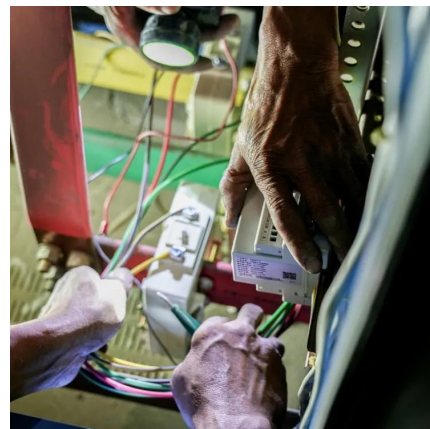
Understanding the battery voltage lets you comprehend the ideal voltage to charge or discharge the battery. This Jackery guide reveals battery voltage ...

[Request Quote](#)

[The Comprehensive Guide to LiFePO4 Voltage Chart](#)

When fully charged, a 12V LiFePO4 battery reaches a voltage of 14.6V. As the battery discharges, the voltage gradually decreases, reaching 10V when fully discharged. It's crucial to monitor ...

[Request Quote](#)



[Lithium-Ion Battery Cell Voltage: What You Need to Know](#)

Lithium-ion battery cell voltage is a critical factor influencing the performance and longevity of rechargeable batteries. Typically, these cells operate at a nominal voltage of 3.6V ...

[Request Quote](#)



36V Lithium-Ion Batteries: Lifespan, Voltage, Compatibility

How Long Does a 36V Lithium-Ion Battery Last?
The lifespan of a 36V lithium-ion battery is influenced by several factors, including usage patterns, charging habits, and ...

[Request Quote](#)



What is the Cut Off Voltage for a Lithium-Ion Battery?

Cut off voltage refers to the minimum voltage level at which a lithium-ion battery should be discharged before it is considered to be fully depleted. For most lithium-ion ...

[Request Quote](#)

Understanding the Voltage of LiFePO4 Battery: A ...

The recommended charging voltage for a 12.8V LiFePO4 battery is 14.4V, with an acceptable range of 14.0V to 14.6V. For higher voltage systems, this value is multiplied accordingly: 28.8V ...

[Request Quote](#)





[Battery Pack Calculator , Good Calculators](#)

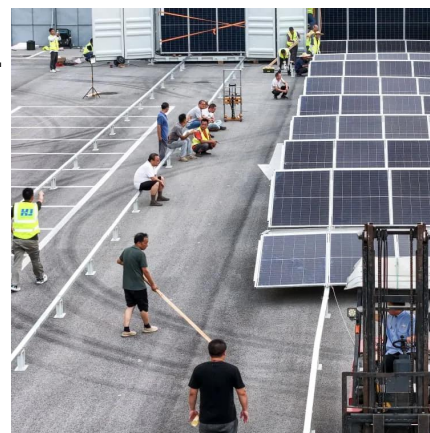
Use it to know the voltage, capacity, energy, and maximum discharge current of your battery packs, whether series- or parallel-connected. Using the battery pack calculator: Just complete ...

[Request Quote](#)

Battery pack calculator : Capacity, C-rating, ampere, charge and

Battery calculator : calculation of battery pack capacity, c-rate, run-time, charge and discharge current Onlin free battery calculator for any kind of battery : lithium, Alkaline, LiPo, Li-ION, ...

[Request Quote](#)



Lithium Battery Voltage Chart

For example, a fully charged 12V LiFePO4 battery typically reads around 13.6-13.8 volts at rest, while a 50% charge level might show around 13.0 volts. When you see voltage drop below ...

[Request Quote](#)

[A Guide to Understanding Battery Specifications](#)

Battery Basics Cell, modules, and packs - Hybrid and electric vehicles have a high voltage battery pack that consists of individual modules and cells organized in series and parallel. A cell is the ...

[Request Quote](#)



Battery Voltage Explained: Nominal, Charged, Minimum, and Cut ...

Cut-off voltage is the lowest voltage a battery cell should reach before it is considered discharged. Discharging below this level can lead to permanent damage, capacity ...

[Request Quote](#)



14.2, 14.4, 14.6

In the AGM profile, it will drop to a float charge of 13.8 volts after the end of bulk of 14.5v so not sure what kind of impact this has long term running in that profile? Typical ...

[Request Quote](#)



Ultimate Guide to Battery Voltage Chart

Charging to 14.6V indicates that the battery pack is fully charged, with each cell reaching 3.65V at this point. Discharging to 10V means that the ...

[Request Quote](#)

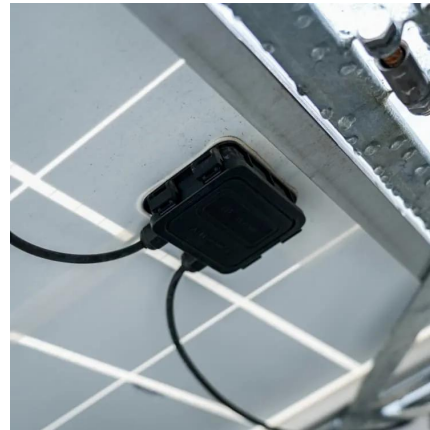




[Ultimate Guide to Battery Voltage Chart](#)

Understanding the battery voltage lets you comprehend the ideal voltage to charge or discharge the battery. This Jackery guide reveals battery voltage charts of different batteries, such as ...

[Request Quote](#)



[Understanding LiFePO4 Voltage: A Complete Guide and Chart](#)

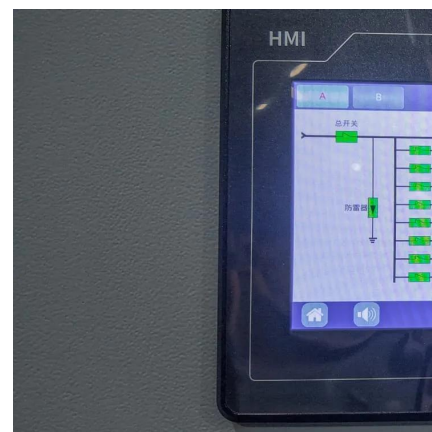
Charge Voltage: The maximum charging voltage for a LiFePO4 cell is generally between 3.55V and 3.70V, with 3.65V being the most common target for full charge. ...

[Request Quote](#)

[Ultimate Guide to Battery Voltage Chart , EcoFlow US](#)

Need an accurate battery voltage chart? Explore different battery chemistry types like lead acid, Li-ion, and LiFePO4 & how they impact lifespan & performance.

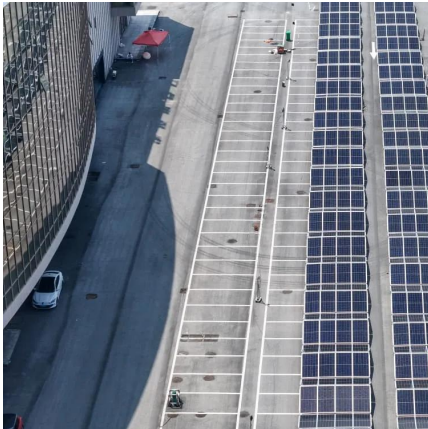
[Request Quote](#)



[Minimum and Maximum Voltage Range of 18650 Cells ...](#)

What Happens If You Over Discharge An 18650 Below 2.5V? The minimum voltage for NMC 18650 batteries is about 2.5 volts. A BMS will ...

[Request Quote](#)



[Charging and Discharging of Lithium-Ion Battery](#)

Learn how lithium-ion batteries charge and discharge, key components, and best practices to extend lifespan. Discover safe charging techniques, voltage limits, and ways to ...

[Request Quote](#)



[Battery pack voltage comparison chart](#)

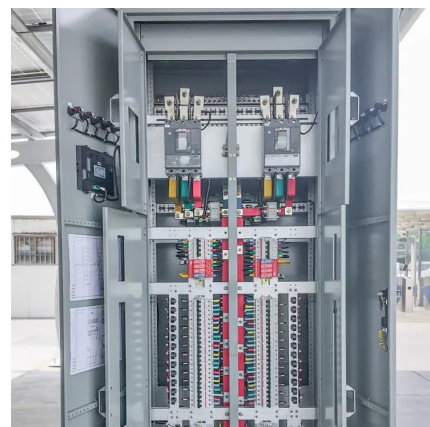
I was messing around with my battery state of charge chart in Excel and thought it would be interesting to compare the overlap in pack voltages for some common pack sizes. I kind of ...

[Request Quote](#)

[LiFePO4 Battery Voltage Chart: An In-Depth Guide](#)

LiFePO4 batteries have a nominal cell voltage of about 3.2 volts, with full charge voltages near 3.65 volts and discharge cut-offs around 2.5 ...

[Request Quote](#)





Contact Us

For catalog requests, pricing, or partnerships, please visit:
<https://www.espaciovet.es>