

What is the normal temperature for an outdoor base station





Overview

Let's start with the most general definition. The base temperature is the outdoor temperature that separates when the building needs.

I used 65°F as the base temperature in the previous article, but let's examine that choice. Why is it the baseline most often used in the U.S. for.

Despite these problems, having a uniform baseline is still good for some things. Being able to compare one climate to another is the main one. Since I know both numbers use the same baseline of 65°F, I can tell right away that the 14,000 HDD of Fairbanks, Alaska, is.

I was a little confused when I first started thinking about degree days. As I showed in my previous article on the topic, you can put DD right into the heat flow equation ($Q = U \times A \times \Delta T$), but in that equation, ΔT is the temperature difference between indoors and.

As I mentioned in the previous section, if you're using degree days to compare climates, you don't need to do anything except make sure the numbers you're using all have the same base temperature. If you're doing degree day calculations, you want to use a.

The operating range for a typically thermoelectric cooler is -40°C to +65°C for most systems, while compressor-based systems are typically designed for operation between 20°C and 55°C. This range is useful for most enclosure applications and operating environments. What is a good base temperature?

Different countries have different base-temperature conventions, like 65°F in the US and 15.5°C in the UK, but these are really just traditional values that have lingered on from the days when degree days were disseminated in print and it wasn't practical to provide them in a wide range of base temperatures.

What is a standard base temperature?

The actual base temperature is the one defined above. The standard base temperature is the one commonly used, and it's not the same everywhere. In the U.S., we mostly use 65°F for heating degree days. In the U.K., 15.5°C (60°F) is the standard base temperature. I was a little confused when I first



started thinking about degree days.

How many cooling degree days does a station have?

For example, cooling degree days for a station with daily mean temperatures during a seven-day period of 67,65,70,74,78,65 and 68, are 2,0,5,9,13,0, and 3, for a total for the week of 32 cooling degree days. 2. State, Regional, and National Data.

Should you use a base temperature for degree day calculations?

If you're doing degree day calculations, you want to use a base temperature as close to the actual base temperature as possible. With data loggers or even just paying a little bit of attention to when the heating and cooling system come on, you can do better than using the standard base temperatures.

What is the difference between base temperature and degree days?

Base temperature is the balance temperature at which a building doesn't need heating or cooling. Degree days are a combination of time and temperature. We looked at their uses and where they come from in Part 1 of this series, and now it's time to go a little deeper.

Do I need a heating base temperature & cooling base temperature?

For a building with both heating and cooling, you'll need to estimate the heating base temperature and the cooling base temperature as you'll be working with both HDD and CDD. The heating base temperature (or heating balance point) of a building is the outside air temperature below which the building needs heating.



What is the normal temperature for an outdoor base station



[Common issues with Weather Stations and how to fix them!](#)

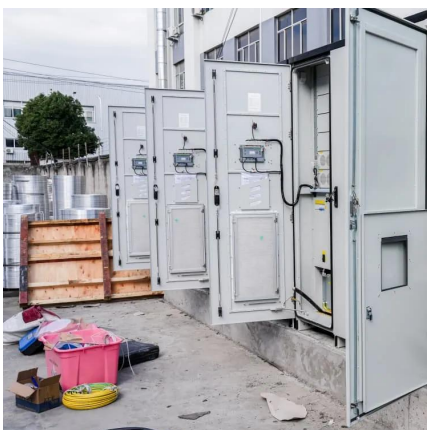
I'm not getting any outdoor readings on my base station from my outdoor sensors, what should I do? This is one of the most common issues that we see here, and in general it is quite an easy ...

[Request Quote](#)

Heating & Cooling Degree Days - Free Worldwide Data Calculation

" Heating degree days ", or " HDD ", are a measure of how much (in degrees), and for how long (in days), outside air temperature was lower than a specific " base temperature " (or " balance ...

[Request Quote](#)



[SPRINGFIELD PRECISETEMP 91905 USER](#)

...

Page 2: Remote Sensor Features REMOTE SENSOR 433 MHz wireless transmission frequency Wireless data transmission to base station up to 100 ...

[Request Quote](#)

[Choosing a Base Temperature for Degree Days](#)

The DT used in degree days is the temperature difference between outdoors and the base



temperature. In the U.S., we use 65°F as our base temperature, but we typically ...

[Request Quote](#)



[Living at Antarctica's McMurdo Station: How warm are ...](#)

Answer by John Harris, decorated explorer: I did three winters (eight months each) at McMurdo Station, and we were allowed to keep the ...

[Request Quote](#)



My Weather Station

What weather station would you recommend I am going to install an outdoor PWS in a somewhat remote Mediterranean climate area of Bizerte, Tunisia. I would like a weather station with all ...

[Request Quote](#)



[Cooling for Mobile Base Stations and Cell Towers](#)

Unattended base stations require an intelligent cooling system because of the strain they are exposed to. The sensitive telecom equipment is operating 24/7 with continuous load that ...

[Request Quote](#)





[Base Temperature \(or Balance Point\) for Heating & Cooling ...](#)

Different countries have different base-temperature conventions, like 65°F in the US and 15.5°C in the UK, but these are really just traditional values that have lingered on from the days when ...

[Request Quote](#)



[Transformer Temperature Range: How Hot is Too Hot?](#)

The optimal operating temperature range for power transformers is typically between 80°C and 120°C (176°F to 248°F), depending on the type and size of the transformer.

[Request Quote](#)

Tempest Home Weather Station

Measured Variables: Outdoor air temperature and relative humidity, dew point and "feels like" temperatures (heat index and wind chill) Station pressure and ...

[Request Quote](#)



[ENERGY STAR Certified Homes County-Level Design ...](#)

One requirement of the ENERGY STAR Certified Homes program is to use outdoor design temperatures that do not exceed the maximum cooling season temperature and minimum ...

[Request Quote](#)



[SPRINGFIELD PRECISETEMP 91905 USER MANUAL Pdf ...](#)

REMOTE SENSOR 433 MHz wireless transmission frequency Wireless data transmission to base station up to 100 ft. (range may vary based on the amount of interference present) LCD ...

[Request Quote](#)



Climate Prediction Center

A mean daily temperature (average of the daily maximum and minimum temperatures) of 65°F is the base for both heating and cooling degree day computations.

[Request Quote](#)

[Thermal Management of Outdoor Enclosures, Part 1](#)

Most enclosures will be installed in a variety of outdoor conditions. Typically, external (ambient) temperature range is from -30° C to 55° C in all ...

[Request Quote](#)





Spectralink IP-DECT Base Station

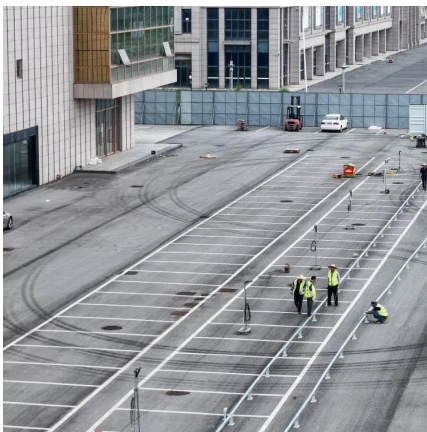
Each Spectralink IP-DECT Base Station has 12 speech channels and provides a typical radio coverage distance: up to 50m indoors or 300m open space (150-1000 feet). Because coverage ...

[Request Quote](#)

[Thermal Management of Outdoor Enclosures, Part 1](#)

Most enclosures will be installed in a variety of outdoor conditions. Typically, external (ambient) temperature range is from -30° C to 55° C in all latitudes and longitudes. ...

[Request Quote](#)



CLIMATOLOGICAL NORMALS

CLIMATOLOGICAL NORMALS STATION: MACTAN INTERNATIONAL AIRPORT, CEBU
PERIOD: 99981231160000-0800 1991 - 2020
LATITUDE: 10°19'20.80"N LONGITUDE: ...

[Request Quote](#)

Heating & Cooling Degree Days - Free Worldwide Data Calculation

Degree Days will generate degree days to any base temperature you choose. If you check the box to " Include base temperatures nearby ", Degree Days will calculate your degree days ...

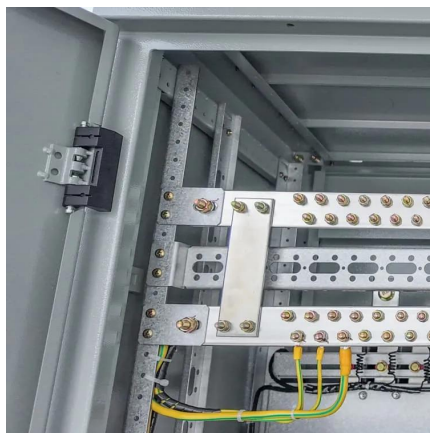
[Request Quote](#)



[Best Home Weather Stations of 2025, Tested and ...](#)

The best home weather stations provide accurate real-time data of the local climate wirelessly to your phone or display.

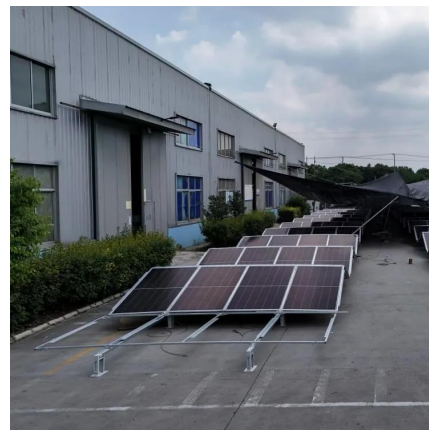
[Request Quote](#)



[Outdoor Temperatures and Relative Humidity](#)

Outdoor summer and winter design temperatures and relative humidity for U.S. states and cities. The table below indicates the summer and winter design conditions in U.S. states and cities. ...

[Request Quote](#)



[Weather Station Mounting Ideas and Solutions With ...](#)

When selecting the correct type of weather station for your particular setup, consider indoor and outdoor conditions, including temperature ranges, ...

[Request Quote](#)





Wyze Outdoor: Base Station

Given it is 80F here in Michigan today but the base station seemed excessively hot. Noticed there are slots cut into the side and bottom of the base station to account for this ...

[Request Quote](#)



[Wireless Outdoor Surveillance Home Security Cam](#)

We will need more time to thoroughly test support beyond 4 cameras and decide if we can allow more cameras per base station in the future. For now, if you ...

[Request Quote](#)

[SPRINGFIELD PRECISETEMP 91905 USER](#)

...

REMOTE SENSOR 433 MHz wireless transmission frequency Wireless data transmission to base station up to 100 ft. (range may vary based on the ...

[Request Quote](#)



Contact Us

For catalog requests, pricing, or partnerships, please visit:
<https://www.espaciovet.es>