

# **What is the voltage after the photovoltaic panel is connected to the inverter**





## Overview

---

Is there a fixed voltage for a solar panel?

Therefore, there is no fixed value. It depends on the connected load and current solar irradiance. The voltage at which the solar panel is designed to operate is known as nominal voltage. It is 12V or 24V. The voltage of a solar panel mainly depends on the solar panel type, size, cells, etc.

What is the voltage of a solar panel?

The voltage of a solar panel mainly depends on the solar panel type, size, cells, etc. Whether it be open circuit voltage, maximum power voltage, or nominal voltage, you will find it all in the datasheet of the manufacturer. Generally, the nominal voltage of any solar panel is 12V or 24V.

Do solar panels produce a higher voltage than nominal voltage?

As we can see, solar panels produce a significantly higher voltage (VOC) than the nominal voltage. The actually solar panel output voltage also changes with the sunlight the solar panels are exposed to.

What is a solar panel voltage & how does it work?

Let's break it down in simple terms. Voltage is the push behind the electricity that flows through your solar panels. Speaking of panels, every solar panel has a certain voltage output. Keep in mind that this output might vary based on factors like sunlight, temperature, and the number of solar cells in the panel.

Do solar panels need an inverter?

Batteries store the energy produced in the form of direct current (DC), and their voltage should match the solar panel's voltage. An inverter is critical because it turns that stored DC energy into AC power for use in your home or business. The inverter's input voltage range should be compatible with your solar panels and battery bank.



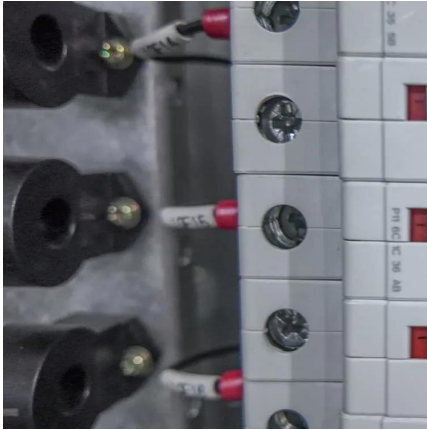
How many volts does a solar inverter use?

Under optimum conditions and no load, your panels will have a voltage of 22.1 volts. With no load, you say the voltage is 19 volts - that means your solar panels are not getting full sunlight to produce 100 watts. The inverter will waste a good bit of power in converting the DC from the solar panels to AC.



## What is the voltage after the photovoltaic panel is connected to the

---



### [Understanding Solar Panel Voltage for Better Output](#)

Find out how solar panel voltage affects efficiency and power output in our comprehensive guide. Get expert insights and tips for optimal solar power performance.

[Request Quote](#)

### [Ultimate Guide to Solar Panel Voltage](#)

Nominal voltage is an approximate solar panel voltage that can help you match equipment. The voltage is usually based on the nominal voltages of appliances connected to ...

[Request Quote](#)



### [Ultimate Guide to Solar Panel Voltage](#)

It depends on the connected load and current solar irradiance. The voltage at which the solar panel is designed to operate is known as ...

[Request Quote](#)



## Solar Panel Voltage Calculator, Formula, Panel Volts Calculation

Solar panel voltage,  $V_{sp}$  (V) in volts equals the product of total number of cells,  $C$  and voltage



per cells,  $V_{pc}$  (V) in volts. Solar panel voltage,  $V_{sp}$  (V) =  $C * V_{pc}$  (V)  $V_{sp}$  (V) = solar panel ...

[Request Quote](#)



### [How Solar Inverter Works \(6 Key Functions\)](#)

Using a transformer in the inverter, the DC current received from the solar panels or the battery is transformed into AC current and transmitted to your electrical supply. Solar ...

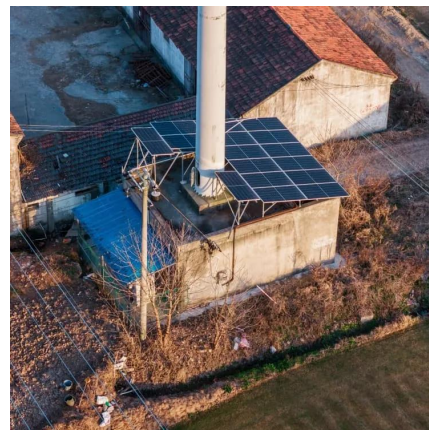
[Request Quote](#)



### **Solar Panel Wiring Basics: Complete Guide & Tips to Wire a PV ...**

There is a solar panel wiring combining series and parallel connections, known as series-parallel. This connection wires solar panels in series by connecting positive to negative ...

[Request Quote](#)



### [Solar Panel Wiring Diagram for All Setups \[+ PDFs\] - ...](#)

What Is a Solar Panel Wiring Diagram? A solar panel wiring diagram (also known as a solar panel schematic) is a technical sketch ...

[Request Quote](#)



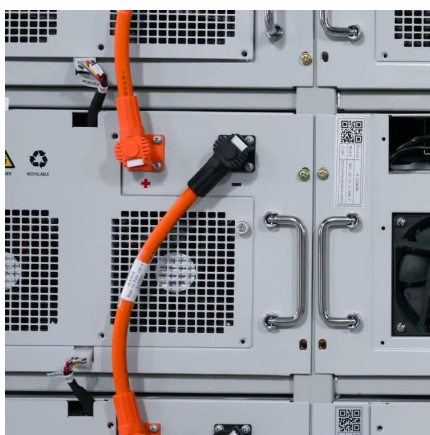




## [How to Fix the Solar Panel No Voltage Problem](#)

Disconnect the solar panel from the system and connect the negative lead of the multimeter to the negative terminal of the solar panel. Repeat this step with the multimeter positive lead with the ...

[Request Quote](#)



## **Solar Panel Voltage Calculator**

After clicking the button, the solar panel voltage calculator will display your maximum open circuit voltage. It also recommends a charge ...

[Request Quote](#)

## [SolarEdge Isolation Fault Troubleshooting](#)

Introduction In photovoltaic systems with a transformer-less inverter, the DC is isolated from ground. Modules with defective module isolation, unshielded wires, defective Power ...

[Request Quote](#)



## [Solar Panel Voltage Drops Under Load \(Problem\)](#)

Is the Panel Operating at Full Capacity? Whether using a single solar panel to power a small device or an entire array, the voltage may drop ...

[Request Quote](#)



### [Correct Order to Safely Connect System](#)

SCC: Always connect battery first before solar (PV) connecting + or - first doesn't matter. Solar down at 100+ volts will produce a small spark have a circuit breaker between ...

[Request Quote](#)



### [Solar Panel Output Voltage: How Many Volts Do PV ...](#)

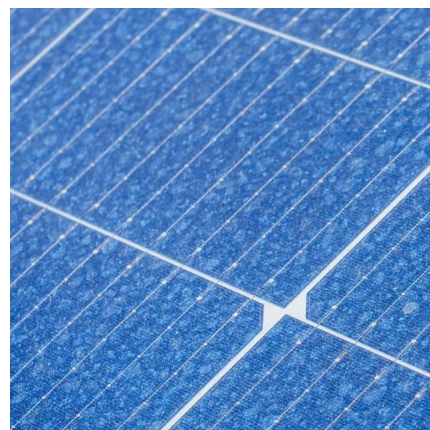
To be more accurate, a typical open circuit voltage of a solar cell is 0.58 volts (at 77°F or 25°C). All the PV cells in all solar panels have the same 0.58V ...

[Request Quote](#)

### [Calculations for a Grid-Connected Solar Energy System](#)

The grid-connected system consists of a solar photovoltaic array mounted on a racking system (such as a roof-mount, pole mount, or ground mount), connected to a combiner box, and a ...

[Request Quote](#)





### [Solar Interconnection Methods \(Full Guide\)](#)

Downsizing the main can be used in combination with the 120% rule to connect larger solar PV systems. In the example below, an 80A ...

[Request Quote](#)

### **How to Connect Solar Panels to Battery Bank/Charge Controller/Inverter**

This comprehensive guide will walk you through connecting solar panels to a battery bank, charge controller, and inverter for a seamless solar energy system. Discover ...

[Request Quote](#)



### [Calculations for a Grid-Connected Solar Energy System](#)

Power (measured in Watts) is calculated by multiplying the voltage (V) of the module by the current (I). For example, a module rated at producing 20 watts and is described as max power ...

[Request Quote](#)

### [The Most Comprehensive Guide to Grid-Tied Inverter ...](#)

It is well-known that inverters are a crucial component of photovoltaic systems. Understanding inverter parameters is essential for better system design and ...

[Request Quote](#)





## [Understanding Solar Panel Voltage for Better Output](#)

Find out how solar panel voltage affects efficiency and power output in our comprehensive guide. Get expert insights and tips for optimal ...

[Request Quote](#)



## [Wiring solar panels to inverter + diagram](#)

Connecting the panels to the solar inverter When setting up a solar panel system, one of the key decisions to make is how to connect the panels.

...

[Request Quote](#)



## **Solar Panel Voltage Calculator**

After clicking the button, the solar panel voltage calculator will display your maximum open circuit voltage. It also recommends a charge controller for your solar array ...

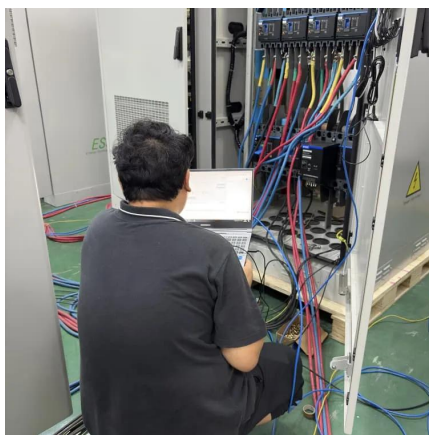
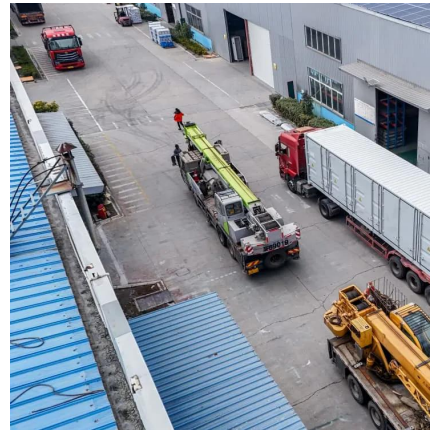
[Request Quote](#)



## inverter

So, the voltage you see across it depends on the impedance of the load that is connected (or the voltage of the battery that is connected); it isn't set by the solar panel itself.

[Request Quote](#)



## [PV Array Voltage and Size: What You Need to Know](#)

When building a PV array, you need a few important numbers. These numbers are your inverter's maximum input voltage and your PV array voltage. Your PV array voltage is the total voltage ...

[Request Quote](#)

## [How Many Volts Does a Solar Panel Produce? Power ...](#)

While the average voltage of a solar panel falls between 10 and 30 volts, several factors can influence the exact voltage output. Understanding ...

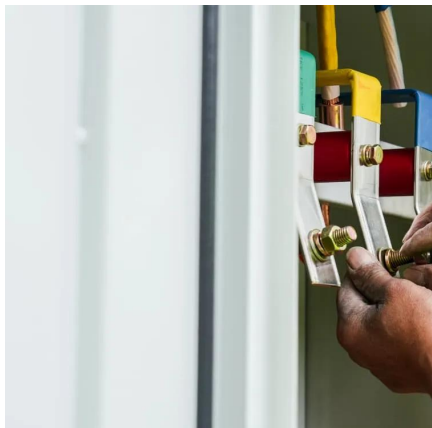
[Request Quote](#)



## [Solar Panel Output Voltage: How Many Volts Do PV Panel ...](#)

To be more accurate, a typical open circuit voltage of a solar cell is 0.58 volts (at 77°F or 25°C). All the PV cells in all solar panels have the same 0.58V voltage. Because we connect them in ...

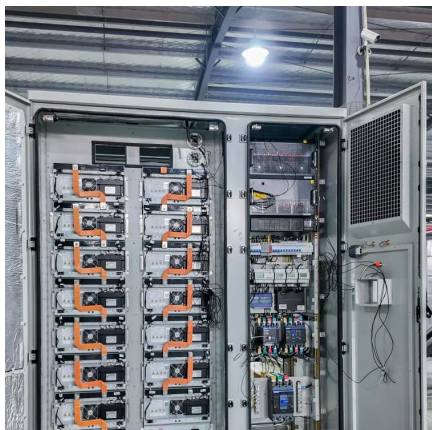
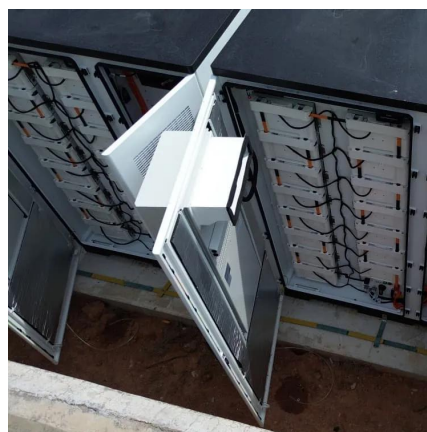
[Request Quote](#)



## Solar Inverters and Voltage Drops

The argument against this advice is basically that the voltage drop is proportional to the length of the wire and that the voltage drop between the ...

[Request Quote](#)



## [Solar Panel Wiring Basics: Complete Guide & Tips to ...](#)

There is a solar panel wiring combining series and parallel connections, known as series-parallel. This connection wires solar panels in ...

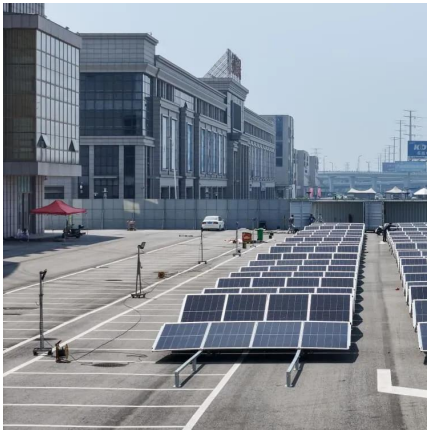
[Request Quote](#)

## [How to Connect Solar Panels to the Grid: A Step-by ...](#)

Master how to connect solar panels to the grid with our step-by-step guide. Make your renewable energy journey simple, effective, and efficient.

[Request Quote](#)





### [Solar Panel Voltage: 2025 Ultimate Guide](#)

It depends on the connected load and current solar irradiance. The voltage at which the solar panel is designed to operate is known as nominal voltage. It is 12V or 24V. ...

[Request Quote](#)

## Contact Us

---

For catalog requests, pricing, or partnerships, please visit:  
<https://www.espaciovet.es>