

What kind of inverter should be used with a 120a lithium battery





Overview

Answer: To choose the right inverter for lithium batteries, match the inverter's voltage and capacity to your battery's specifications, prioritize pure sine wave inverters for efficiency, ensure compatibility with lithium battery chemistry, and factor in safety features like overload protection. Which battery should I use for my inverter?

When it comes to powering your inverter, there are a few alternative options to consider aside from lithium batteries. While lithium batteries have gained popularity due to their numerous advantages, they may not be the right choice for everyone. One alternative option is lead-acid batteries.

Are inverters compatible with lithium batteries?

Understanding the basics of inverters and different battery options sets the stage for exploring the compatibility between inverters and lithium batteries. Lithium batteries have revolutionized the world of inverters, offering a range of advantages that make them an ideal choice for powering these devices.

How do I choose a lithium-ion battery inverter?

Lithium-ion batteries are becoming increasingly popular for use in renewable energy systems because of their high energy density and long lifespan. When choosing an inverter for a system that uses lithium-ion batteries, it's important to select an inverter that is specifically designed to work with this type of battery.

What is a lithium ion battery for a home inverter?

Lithium-ion batteries offer a more consistent discharge rate, ensuring that your inverter operates smoothly and efficiently. A lithium-ion battery for a home inverter can significantly enhance your home's energy storage capabilities.

Can a solar inverter be used with a lithium battery?



Integrating a solar inverter with a lithium battery can take your renewable energy setup to the next level. This combination allows for better energy storage, improved efficiency, and greater resilience during power outages. LiFePO₄ batteries are particularly well-suited for solar applications because their thermal stability and long cycle life.

Why are lithium inverters so popular?

The battery life can be extended without the need for memory or planned cycling. As a result, lithium inverters powered by batteries are becoming more and more popular for use in electric and hybrid vehicles, laptops, and cell phones.



What kind of inverter should be used with a 120a lithium battery



[How to Choose the Right Inverter for Lithium Batteries?](#)

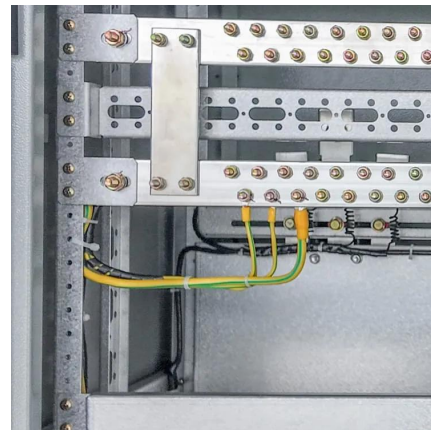
Answer: To choose the right inverter for lithium batteries, match the inverter's voltage and capacity to your battery's specifications, prioritize pure sine wave inverters for ...

[Request Quote](#)

will 3800w of panels + one 100ah 48v lithium battery run a fridge ...

During daylight and assuming full power from the panels, running thru a Growatt 12kW 48V 250VDC 120A Off-Grid Inverter will 3800w of panels + one 100ah 48v lithium ...

[Request Quote](#)



[Do I Need a Special Inverter for a Lithium Battery?](#)

"As experts in Lithium LiFePO4 batteries, we at Redway Battery strongly recommend using a specialized inverter designed for lithium technology. These inverters ...

[Request Quote](#)



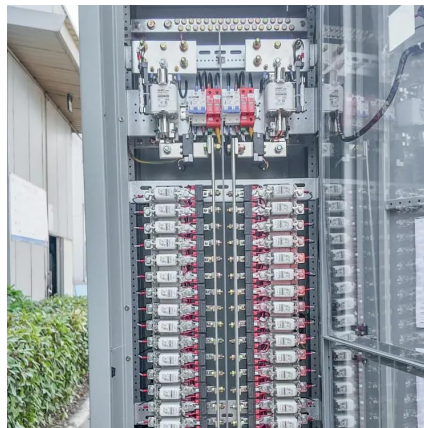
[Best Inverters for Lithium Ion Battery \[2023\]](#)

In general, using square wave inverters with lithium-ion batteries is not advised. Here are the



most compatible options to go with: 1. Renogy ...

[Request Quote](#)



[Can Lithium Batteries Work With Any Type of Inverter?](#)

For optimal performance in home energy stems, choose an inverter specifically designed for lithium battery or LiFePO4 battery systems, and always verify compatibility before ...

[Request Quote](#)

[Can Lithium Batteries Work With Any Type of Inverter?](#)

For optimal performance in home energy stems, choose an inverter specifically designed for lithium battery or LiFePO4 battery systems, and ...

[Request Quote](#)



Making my own 72v battery?

The Orion BMS O2 is the latest revision from Orion battery management system flagship product line to protect your lithium ion battery ...

[Request Quote](#)



[What size inverter can I use with my lithium battery?](#)

What size inverter can I use with my lithium battery? Was this article helpful? Have more questions? Submit a request. We recommend the following inverter sizes: 100Ah battery: Up ...

[Request Quote](#)



[Importance of Compatibility Between Inverter and ...](#)

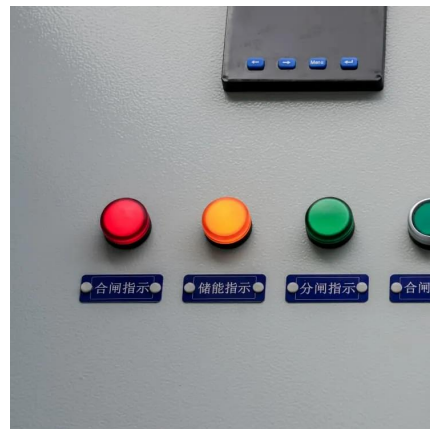
Among these innovations, lithium batteries have emerged as the preferred choice for backup power due to their efficiency, longevity, and ...

[Request Quote](#)

What size fuse off the battery do I need for a 1200 watt rms amp

I know that the fuse by the battery goes by the size and length of the wire, not so much by the amp (s), that much I have learned on here. So you might want to let everyone know how long ...

[Request Quote](#)



[Which inverter is best for lithium batteries?](#)

The best inverter for lithium batteries is a pure sine wave inverter designed to provide clean, stable power that protects sensitive electronics and maximizes battery ...

[Request Quote](#)



[Best Battery Options to Use with an Inverter](#)

When it comes to using an inverter as a power source, having a reliable battery backup is essential. The type of battery you choose to use with your inverter can greatly ...

[Request Quote](#)



What Are Lithium Battery Power Inverters and Why Are They ...

Lithium battery power inverters convert DC power from lithium batteries into AC electricity for household/industrial use. They outperform traditional lead-acid systems through ...

[Request Quote](#)

[What Size Battery Do You Need For Your Caravan?](#)

Wondering what size battery for your caravan you need? This updated 2025 guide covers AGM vs lithium, how to calculate your power ...

[Request Quote](#)





[Do You Need a Special Inverter for Lithium Batteries?](#)

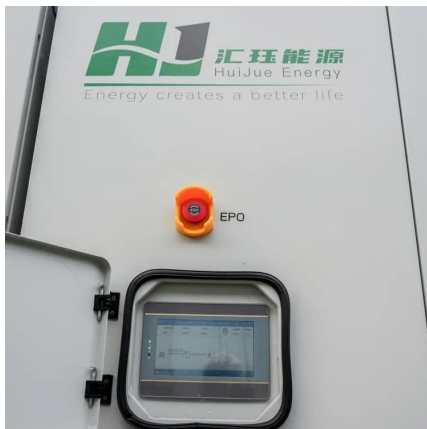
Selecting the right inverter for your lithium battery system involves thoroughly assessing various technical and practical factors. First and ...

[Request Quote](#)

[Which Battery Capacity Is Best for Inverter](#)

The best battery capacity for your inverter depends on your power needs, but 150Ah to 200Ah is ideal for most homes. Bigger isn't always better--efficiency matters. Many ...

[Request Quote](#)



[Best Inverter For Lithium Ion Battery \(2025 Updated\)](#)

When looking for an inverter for a lithium ion battery, it is important to consider the compatibility, voltage handling, power output, safety rating, ...

[Request Quote](#)

16 bms 320

Looking for a good deal on 16 bms 320? Explore a wide range of the best 16 bms 320 on AliExpress to find one that suits you! Besides good quality brands, you'll also find ...

[Request Quote](#)



[Best Inverters for Lithium Ion Battery \[2023\]](#)

Lithium-ion batteries are becoming increasingly popular for use in renewable energy systems because of their high energy density and long lifespan. When choosing an ...

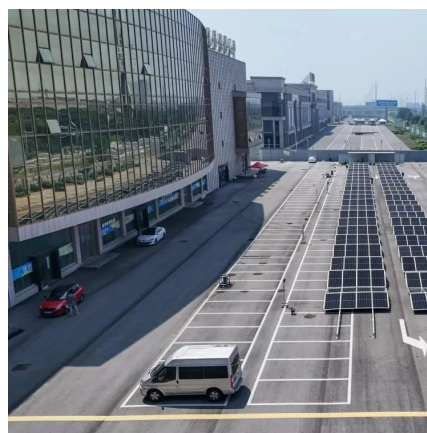
[Request Quote](#)



[What Size Inverter Do You Need For Your Caravan?](#)

AGM batteries do not have as high of a discharge current as lithium batteries. Therefore, you need a lot larger AGM battery bank to power the same size inverters. This ...

[Request Quote](#)



[Do You Need a Special Inverter for Lithium Batteries?](#)

Selecting the right inverter for your lithium battery system involves thoroughly assessing various technical and practical factors. First and foremost, it is essential to align the ...

[Request Quote](#)





Compatibility of Lithium-Ion Batteries with Existing Inverters

This blog post will walk you through the essentials of lithium-ion batteries, their benefits, and the steps to seamlessly integrate them with your current inverter setup. From practical examples ...

[Request Quote](#)



[Can all inverters use lithium batteries?](#)

While some believe that all inverters can seamlessly integrate with any type of battery technology, this is not always the case. Understanding the unique characteristics of ...

[Request Quote](#)

[Which inverter is best for lithium batteries?](#)

The best inverter for lithium batteries is a pure sine wave inverter designed to provide clean, stable power that protects sensitive electronics and maximizes battery efficiency.

[Request Quote](#)



6500W 48V Off-grid Hybrid Solar Inverter MPPT 120A Built-in ...

1 day ago · This inverter is a high frequency inverter, Lead-acid batteries, gel batteries, and lithium batteries can be used. Its comprehensive LCD display offers user-configurable and easy ...

[Request Quote](#)



[Best Inverter For Lithium Ion Battery \(2025 Updated\)](#)

When looking for an inverter for a lithium ion battery, it is important to consider the compatibility, voltage handling, power output, safety rating, and value for money. By doing so, ...

[Request Quote](#)



[Best Inverters for Lithium Ion Battery \[2023\]](#)

In general, using square wave inverters with lithium-ion batteries is not advised. Here are the most compatible options to go with: 1. Renogy 1000W Pure Sine Wave Inverter - ...

[Request Quote](#)



Contact Us

For catalog requests, pricing, or partnerships, please visit:
<https://www.espaciovet.es>