

# **What size inverter should I use with a 120ah lithium battery**





## Overview

---

To recharge your battery from time to time you would need the right size solar panel to do the job! Read the below article to find out the suitable solar panel size for your battery bank.

What size inverter for a 200Ah battery?

To determine the appropriate inverter size for a 200Ah battery, consider the following: A 500VA inverter would be suitable, offering a balance between performance and battery life. For extended run times, consider larger inverters or additional batteries to meet higher power demands.

Can a lithium battery run a large inverter?

Bottom line, if you want to run large inverter loads above 1000w on a lithium battery, make sure you choose an lithium battery that is designed for larger inverters or a system that can be paralleled safely with active balancing between the connected batteries.

What is the recommended battery size for an inverter?

Interpreting Results: Once you input the required data, the calculator will generate the recommended battery size in ampere-hours (Ah). For instance, if your power consumption is 500 watts, the usage time is 4 hours, and the inverter efficiency is 90%, the calculator might suggest a battery size of approximately 222 Ah.

What voltage should a 12V inverter run on?

The input voltage of the inverter should match the battery voltage. (For example 12v battery for 12v inverter, 24v battery for 24v inverter and 48v battery for 48v inverter Summary What Will An Inverter Run & For How Long?

.

How much battery do I need to run a 3000-watt inverter?

You would need around 24v 150Ah Lithium or 24v 300Ah Lead-acid Battery to



run a 3000-watt inverter for 1 hour at its full capacity Here's a battery size chart for any size inverter with 1 hour of load runtime Note! The input voltage of the inverter should match the battery voltage.

Why should you use the calculate battery size for inverter calculator?

Using the Calculate Battery Size for Inverter Calculator can significantly streamline your power management process. This tool is particularly beneficial in scenarios where precise power estimation is critical, such as designing renewable energy systems, ensuring backup power in off-grid locations, or optimizing battery usage for cost efficiency.



## What size inverter should I use with a 120ah lithium battery

---



### [Lithium Batteries: What Size Inverter Can I Use?](#)

Bottom line, if you want to run large inverter loads above 1000w on a lithium battery, make sure you choose a lithium battery that is designed for larger inverters or a system that can be ...

[Request Quote](#)

### [How Do I Match My Battery Size to My Inverter?](#)

Matching your battery size to your inverter is essential for ensuring efficient power usage and preventing system overloads. A well-sized battery will provide adequate energy for your ...

[Request Quote](#)



### [Recommended Inverter Cable, Breaker & Fuse Sizing](#)

Determine what size inverter-to-battery cables and DC breaker (or fuse) you should use with an off-grid inverter to install and operate it safely. Use this table to decide what size and to use ...

[Request Quote](#)

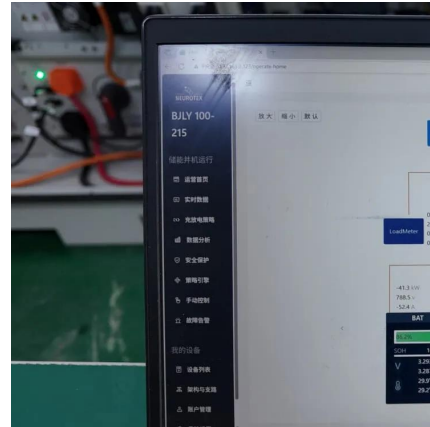
### [What size inverter can I use with my lithium battery?](#)

We recommend the following inverter sizes:  
100Ah battery: Up to 1200W inverter 200Ah



battery: Up to 2000W inverter 300Ah battery: Up to

[Request Quote](#)



### [How to calculate your solar power requirements](#)

The size of the solar panel required to charge a lithium battery depends on the lithium battery's capacity. What size solar panel do I need to ...

[Request Quote](#)

### [The Only Inverter Size Chart You'll Ever Need](#)

During our research, we discovered that most inverters range in size from 300 watts up to over 3000 watts. In this article, we guide you through the different inverter sizes. ...

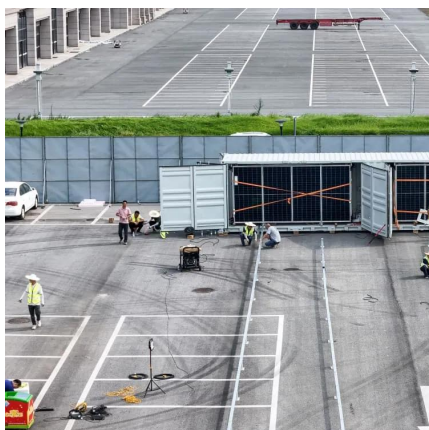
[Request Quote](#)



### [Did I buy the wrong size inverter? : r/SolarDIY](#)

Here's my problem: After reading up again, people say they do not recommend a 2000 watt inverter for a single 100ah lithium battery, my idea was in the future I would be able to add ...

[Request Quote](#)



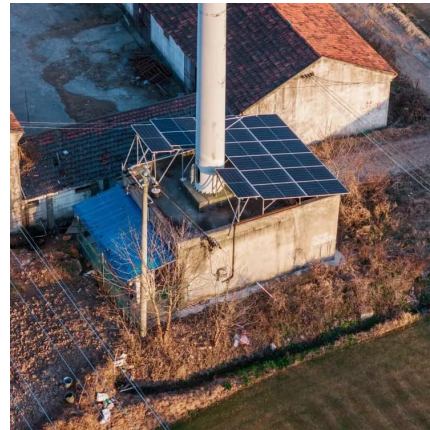




## [What Size Lithium Battery Do I Need To Run a 1000W ...](#)

Have you ever wondered what size of lithium battery you need to power a 1000W inverter? Don't worry, in this article, I will provide you with the ...

[Request Quote](#)



## **What Size Fuse for 400, 750, 1000, 1500, 2000, 3000-watt Inverter**

Quick Answer The 400, 750, 1000, 1500, 2000, 3000 watt inverter would require 40A, 75A, 100A, 150A, 200A, 300A respectively. Remember that the size of the Fuse would also determine ...

[Request Quote](#)

## [The Only Inverter Size Chart You'll Ever Need](#)

During our research, we discovered that most inverters range in size from 300 watts up to over 3000 watts. In this article, we guide you ...

[Request Quote](#)



## [Understanding Battery Capacity and Inverter Compatibility](#)

In this guide, we will delve into the practical aspects of converting amp-hours to watt-hours, calculating battery run times, and determining the right inverter size, among other ...

[Request Quote](#)



## Choosing the Right Size and Capacity of LiFePO4 Battery for Your Inverter

The advent of lithium iron phosphate (LiFePO4) batteries has revolutionized the energy storage industry, particularly for applications involving inverters. LiFePO4 batteries offer a unique ...

[Request Quote](#)



## Can an Inverter Be Too Big for Your Battery System?

Lithium-ion batteries tolerate higher discharge rates (up to 1C) compared to lead-acid (0.5C). A 100Ah LiFePO4 battery can safely power a 1200W inverter, while lead-acid should cap at 600W.

[Request Quote](#)

## How to Calculate Battery Size for Inverters of Any Size

Picking the right inverter for your needs can already be a challenge, so sizing an inverter to a battery bank can seem like daunting additional information to know. We're here to let you ...

[Request Quote](#)





## [What Size Inverter Can I Run Off a 100Ah Lithium Battery?](#)

When using a 100Ah lithium battery, the size of the inverter you can run typically depends on the battery's capacity and the power requirements of your devices. Generally, you ...

[Request Quote](#)

### **Correct inverter size**

Depends on what you want to run, 250w is really small. Just make sure it is a pure sine wave. Add up the wattage, it's on the label of the appliances. Just an example small ...

[Request Quote](#)



### **Correct inverter size**

Depends on what you want to run, 250w is really small. Just make sure it is a pure sine wave. Add up the wattage, it's on the label of the ...

[Request Quote](#)

## [What Size Battery for 200W Solar Panel? \(Explained!\)](#)

What Size Battery For 200 watt Solar Panel?  
What size battery you need, will depend on the total power production of your solar panels. And the power output of the solar ...

[Request Quote](#)

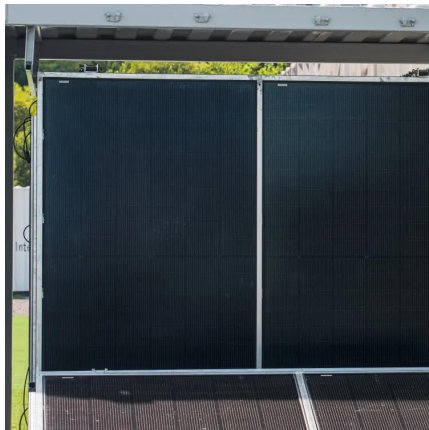




### [Lithium Batteries: What Size Inverter Can I Use?](#)

Bottom line, if you want to run large inverter loads above 1000w on a lithium battery, make sure you choose an lithium battery that is designed for larger ...

[Request Quote](#)



### [Solar Panel Size Calculator: What Size Panel Do I...](#)

Calculate what size solar panel you need to charge a lithium or lead acid battery with our free solar panel size calculator.

[Request Quote](#)



### [What Size Inverter Can I Run Off a 200Ah Battery?](#)

When determining what size inverter can be run off a 200Ah battery, it's essential to consider both the power requirements of your devices and the characteristics of the battery itself. A typical ...

[Request Quote](#)





## Calculate The Right Size Solar Panel To Charge A 120Ah Battery

What Size Solar Panel Do I Need to Charge a 120Ah Battery? To charge a 120Ah battery effectively, you typically need a solar panel rated between 100W to 300W, depending ...

[Request Quote](#)



## [How Long Will 12v Battery Run a Refrigerator?](#)

Need a simple solution? use the calculator given below to figure out how long will a 12v deep cycle battery or a car battery run your RV ...

[Request Quote](#)

## [Choosing the Right Fuses for Your Lithium Battery ...](#)

The Importance of Correct Fuses in Lithium Battery Systems When setting up a lithium battery system, one of the most critical decisions you'll ...

[Request Quote](#)



## [Calculate Battery Size for Inverter Calculator](#)

Estimate the battery capacity required for your inverter based on power load, runtime, and efficiency. Using the Calculate Battery Size for Inverter Calculator can ...

[Request Quote](#)



## Calculate Battery Size For Any Size Inverter (Using Our Calculator)

To recharge your battery from time to time you would need the right size solar panel to do the job! Read the below article to find out the suitable solar panel size for your battery bank

[Request Quote](#)



## [200ah bank of Lithium batteries and a 3000watt inverter](#)

What is the voltage of the 200ah battery bank?  
Basic rule of thumb is:  $3000w \text{ inverter} / \text{battery voltage} = \text{amps} + 25\% \text{ safety factor}$ . If your battery is 48v then  $3000/48 = 62.5 + 25\% = 78a$ . ...

[Request Quote](#)

## Contact Us

For catalog requests, pricing, or partnerships, please visit:  
<https://www.espaciovet.es>