

# **Will lithium batteries be protected by inverters**





## Overview

---

What is a lithium battery for inverter?

Lithium offers unmatched performance, a longer lifespan, and better efficiency than traditional batteries. Whether you're setting up a home backup system, solar power solution, or mobile energy unit, this guide will walk you through everything you need to know about lithium batteries for inverters. Part 1.

Should you use a lithium-ion battery for a home inverter?

A lithium-ion battery for a home inverter can significantly enhance your home's energy storage capabilities. This translates to more reliable power during outages and better management of renewable energy resources like solar panels. Lithium-ion batteries require less maintenance and have a longer lifespan compared to traditional batteries.

Can a solar inverter be used with a lithium battery?

Integrating a solar inverter with a lithium battery can take your renewable energy setup to the next level. This combination allows for better energy storage, improved efficiency, and greater resilience during power outages. LiFePO4 batteries are particularly well-suited for solar applications because of their thermal stability and long cycle life.

How do I choose a lithium battery for my inverter system?

When selecting a lithium battery for your inverter system, consider the following factors: Capacity: Ensure the battery's capacity meets your energy needs, typically measured in kilowatt-hours (kWh). Voltage: Confirm compatibility between your inverter's voltage requirements and the battery's output.

Which battery should I use for my inverter?

When it comes to powering your inverter, there are a few alternative options



to consider aside from lithium batteries. While lithium batteries have gained popularity due to their numerous advantages, they may not be the right choice for everyone. One alternative option is lead-acid batteries.

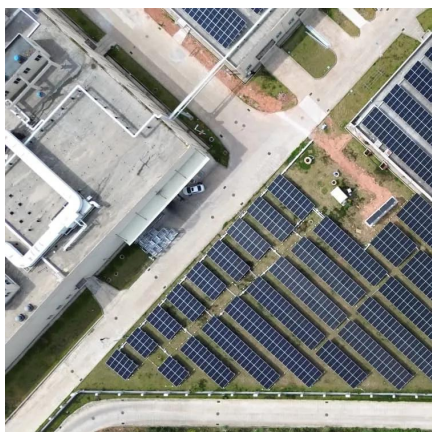
Can a lithium battery be used with a sine wave inverter?

Some examples include pure sine wave and modified sine wave inverters. These inverters may work better with lithium-ion batteries. Understanding your inverter type is crucial to avoid potential issues down the line. The first step in installing a lithium battery for inverter with an existing inverter is to assess your current setup.



## Will lithium batteries be protected by inverters

---



### Amazon : Lithium Inverter

Explore versatile lithium battery inverters compatible with solar, vehicles, and more. Find options with USB ports, remote controls, and hardwire capabilities.

[Request Quote](#)

### [Importance of Compatibility Between Inverter and ...](#)

Inverters that are not designed to work with lithium batteries may overcharge or undercharge the battery, leading to premature degradation. ...

[Request Quote](#)



### Importance of Compatibility Between Inverter and Lithium Battery

Inverters that are not designed to work with lithium batteries may overcharge or undercharge the battery, leading to premature degradation. Ensuring compatibility means that ...

[Request Quote](#)

### Do I Need A Fuse Between Battery And Inverter? Key Guidelines ...

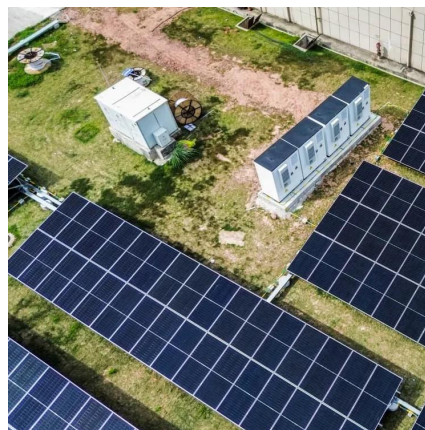
It is crucial to install a fuse between the battery and inverter. A Mega fuse or ANL fuse is





recommended because they manage high short-circuit currents well. For large lithium ...

[Request Quote](#)



### [Can all inverters use lithium batteries?](#)

Not all inverters are designed to work with lithium batteries, so it's essential to ensure that your chosen inverter can support this type of battery. The first thing you need to ...

[Request Quote](#)

### [Can Lithium Batteries Work With Any Type of Inverter?](#)

When setting up solar energy systems or home energy storage, a common question arises: Are lithium batteries compatible with all inverters? ...

[Request Quote](#)



### [Do I need a special inverter for Lithium battery?](#)

Discover if you need a special inverter for a lithium battery. Learn about the important factors to consider for compatibility with your battery.

[Request Quote](#)



## [Do You Need a Special Inverter for Lithium Batteries?](#)

Effective setups often include inverters specifically designed or certified for use with lithium battery technology, as evidenced by multiple case studies and user reports. Using ...

[Request Quote](#)



## [Can Lithium Batteries Work With Any Type of Inverter?](#)

When setting up solar energy systems or home energy storage, a common question arises: Are lithium batteries compatible with all inverters? The short answer is no - proper ...

[Request Quote](#)

## [How to Choose the Right Inverter for Lithium Batteries?](#)

Answer: To choose the right inverter for lithium batteries, match the inverter's voltage and capacity to your battery's specifications, prioritize pure sine wave inverters for ...

[Request Quote](#)



## [Complete Guide to Inverter Batteries - NPP POWER](#)

Inverter batteries is a rechargeable battery built to supply backup power for inverters, which convert direct current (DC) into alternating current (AC). These batteries store ...

[Request Quote](#)



### 3. Installation and wiring examples

The short circuit protection of the BP will be activated if you try to directly connect loads with capacitors, for example inverters or inverter/chargers, on their DC inputs. For that use case, ...

[Request Quote](#)



### [Which Inverter Battery Is Best \(Calculated Options\)](#)

There are two kinds of batteries when it comes to powering inverters: lead-calcium batteries and lithium-ion batteries. Each battery has its ...

[Request Quote](#)

### Old Magnum MS2812 and new Lithiums

As some of you may know, I am in the process of upgrading to Battleborn lithiums. I have an older (2017) magnum MS 2812 charger/inverter. ...

[Request Quote](#)





### [Compatibility of Lithium-Ion Batteries with Existing ...](#)

While many inverters can be adapted to work with lithium-ion batteries, it's essential to check the specifications and compatibility of your particular ...

[Request Quote](#)

### [Can a Lithium Battery Be Charged by an Inverter?](#)

Yes, a lithium battery can be charged by an inverter, provided the inverter is designed for this purpose. Typically, inverters convert DC power to AC power, but certain ...

[Request Quote](#)



### [Which Battery Is Best for an Inverter? - leaptrend](#)

Leaptrend partners with eco-conscious disposal programs. Q: Are lithium batteries safe for homes? A: Yes, Leaptrend's lithium-ion batteries ...

[Request Quote](#)

### [Understanding Battery Capacity and Inverter Compatibility](#)

Inverter Efficiency: Lithium batteries generally work well with modern inverters, but checking the inverter's efficiency rating is advisable. Efficiency impacts the actual power ...

[Request Quote](#)





### [Do You Need a Special Inverter for Lithium Batteries?](#)

Effective setups often include inverters specifically designed or certified for use with lithium battery technology, as evidenced by multiple case ...

[Request Quote](#)



## Understanding the Basics of Connecting Lithium Batteries to Inverters

Lithium batteries are widely used in energy storage systems due to their high efficiency, long life cycle, and light weight. Connecting a lithium battery to an inverter is crucial ...

[Request Quote](#)



### [Lithium Battery for Inverter: Pros, Specs, and Tips](#)

Whether you're setting up a home backup system, solar power solution, or mobile energy unit, this guide will walk you through everything you ...

[Request Quote](#)





## Can An Inverter Damage A Battery? Risks, Safety Concerns, And

Yes, an inverter can damage a battery. The potential for damage primarily stems from improper usage or incompatible specifications. Inverters convert direct current (DC) from ...

[Request Quote](#)



## [What is a Battery Inverter? A Comprehensive Overview](#)

What's a battery inverter? Battery inverters convert energy for your devices. Learn their key features and benefits to improve your energy use.

[Request Quote](#)

## [Do I Need a Special Inverter for a Lithium Battery?](#)

Yes, using a lithium battery often requires a special inverter designed to handle the specific voltage and charging characteristics of lithium technology.

[Request Quote](#)



## [Lithium Battery for Inverter: Pros, Specs, and Tips](#)

Whether you're setting up a home backup system, solar power solution, or mobile energy unit, this guide will walk you through everything you need to know about lithium ...

[Request Quote](#)



## Lithium Batteries for Inverters: The Future of Energy Storage

This comprehensive guide delves into the numerous advantages of lithium batteries and how they can optimize inverter systems for a more sustainable energy future.

[Request Quote](#)



## Compatibility of Lithium-Ion Batteries with Existing Inverters

While many inverters can be adapted to work with lithium-ion batteries, it's essential to check the specifications and compatibility of your particular inverter model.

[Request Quote](#)

## [Lithium batteries in residential properties](#)

IF lithium batteries are not allowed to be in the house, what about the 50 amp/hr of drop in batteries for alarm systems and backup power supplies with a 100 amp/hr battery for the ...

[Request Quote](#)





### [Lithium Batteries for Inverters: The Future of Energy ...](#)

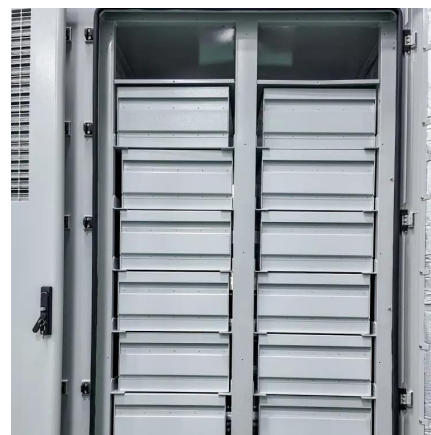
This comprehensive guide delves into the numerous advantages of lithium batteries and how they can optimize inverter systems for a more sustainable ...

[Request Quote](#)

### **Are Lithium-Ion Batteries Appropriate for Inverter Applications?**

For inverters requiring reliability, scalability, and fast response, lithium-ion isn't just appropriate--it's transformative. The technology's ability to handle deep discharges without ...

[Request Quote](#)



## **Contact Us**

---

For catalog requests, pricing, or partnerships, please visit:  
<https://www.espaciovet.es>